

Eixample Dreta, Barcelona

REF. VB2506057

# Apartment for sale in Roger de Llúria

## Features

- ✓ Heating
- ✓ AACC
- ✓ Lift

Surface  
**104 m<sup>2</sup>**

Bedrooms  
**2**

Bathroom  
**1**

Price  
**600,000 €**



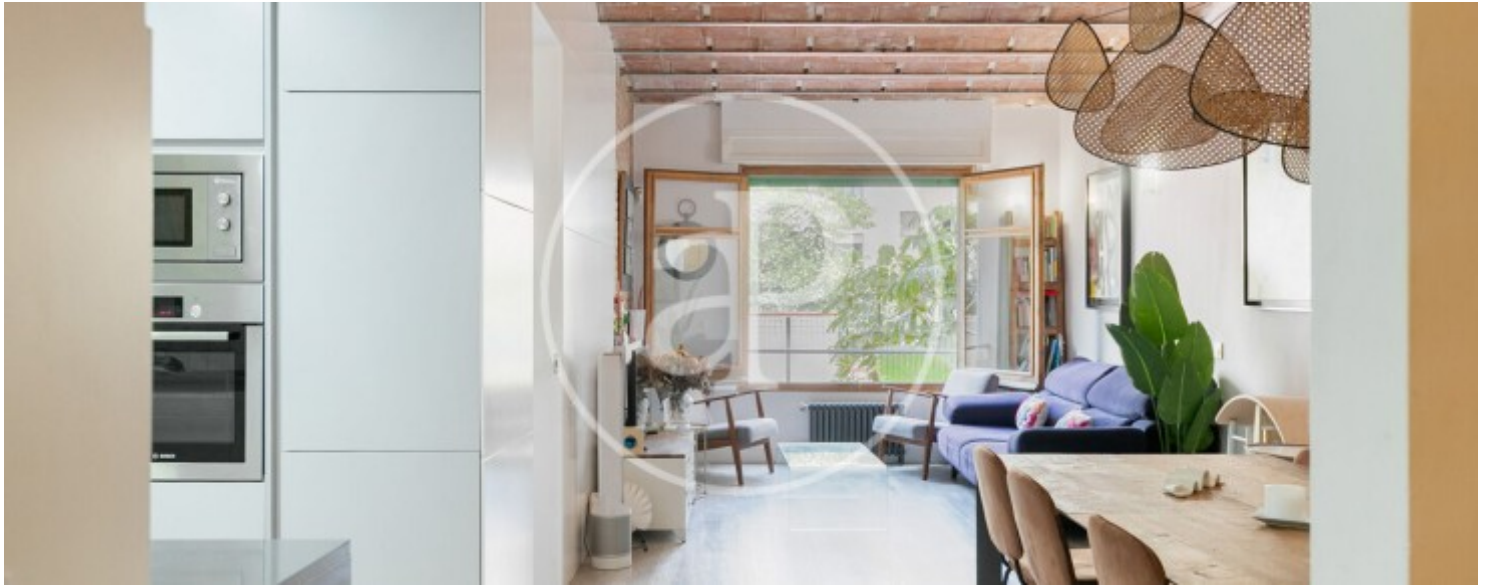
In a well-maintained building from 1935, we find for sale this practical and functional apartment, which comes from a segregation of the old Eixample apartments, maintaining its original charm in its high ceilings and Catalan vaulted ceilings. The apartment features a very practical entrance thanks to a closet space and open area. Along the wide hallway, we find a spacious double bedroom with a large window overlooking a lovely interior patio, a complete bathroom, and finally, the large living space which consists of a spacious equipped kitchen, a pleasant and quiet living-dining room with a large window, and the second double bedroom with built-in wardrobes and a large window. A small interior patio offers a breath of fresh air to the apartment with its plants and extra space. As unique details, we

highlight the high ceilings, the Catalan vaulted ceilings, and the marquetry of the windows. The apartment has heating and air conditioning. As an extra, a practical storage room is included with the apartment. The building also boasts an enjoyable rooftop terrace where you can admire city views, sunbathe, and enjoy tranquility in the heart of the vibrant Eixample Dreta of Barcelona!

**Contact us,**  
we will be happy to assist you,  
to offer you more details and information.

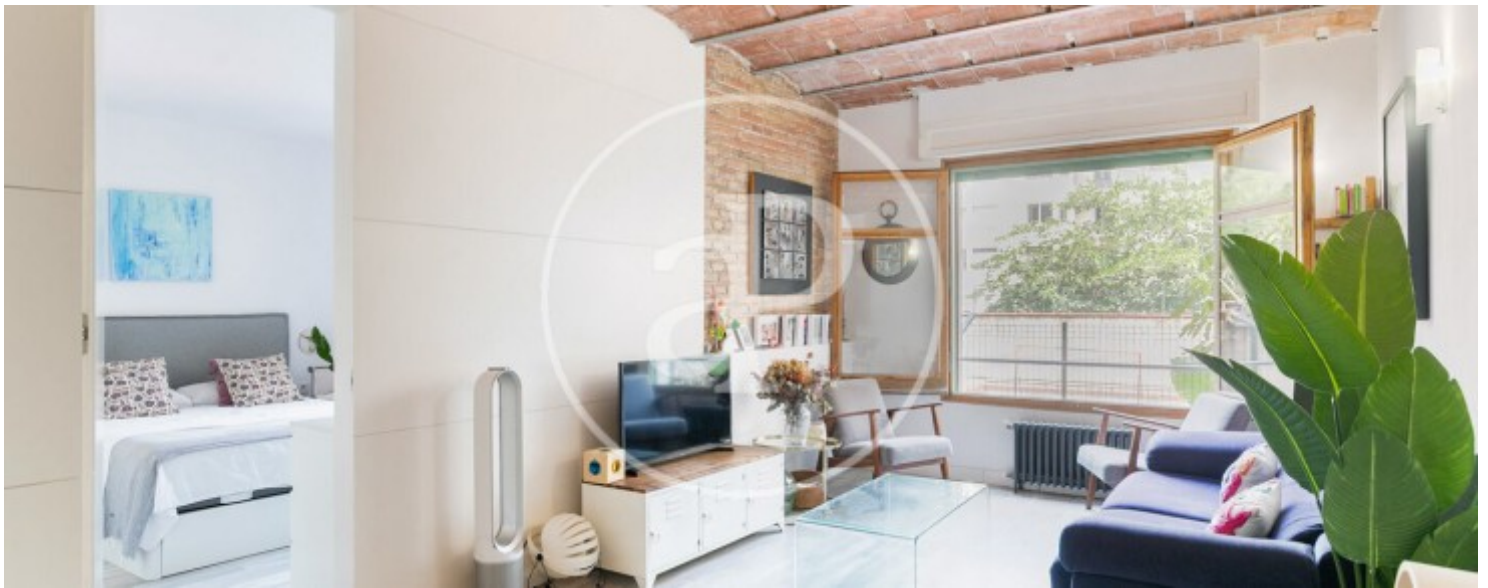
Eixample Dreta, Barcelona

REF. VB2506057



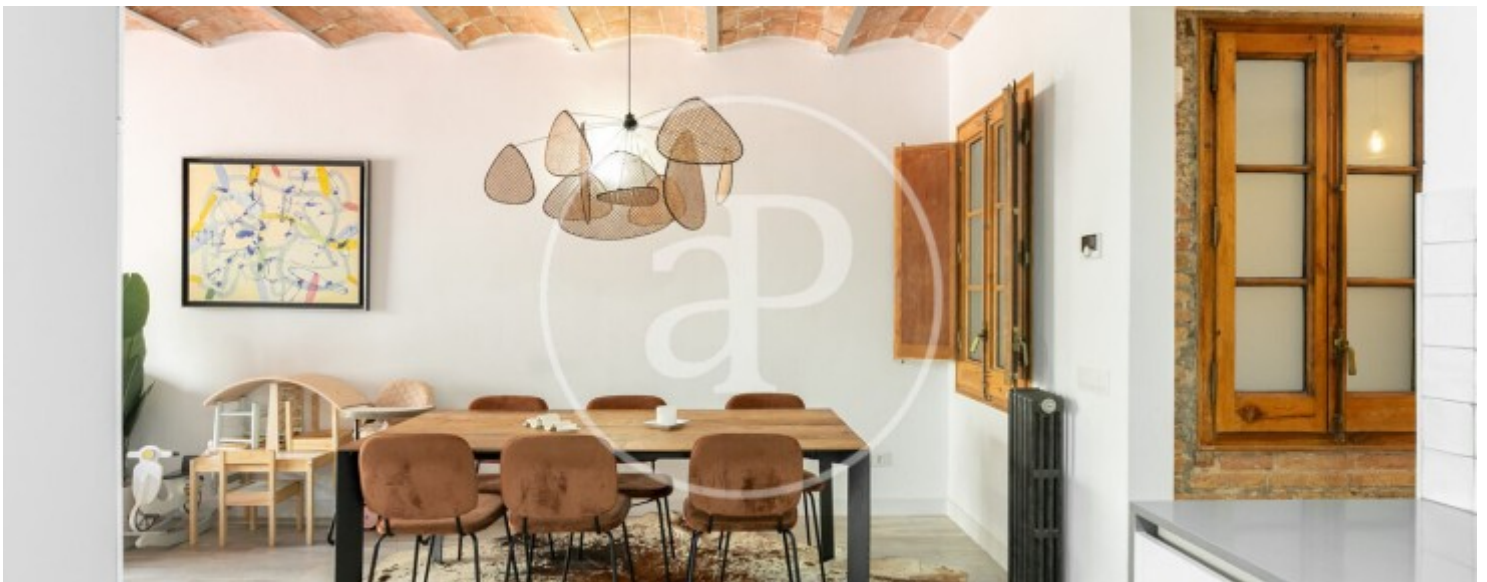
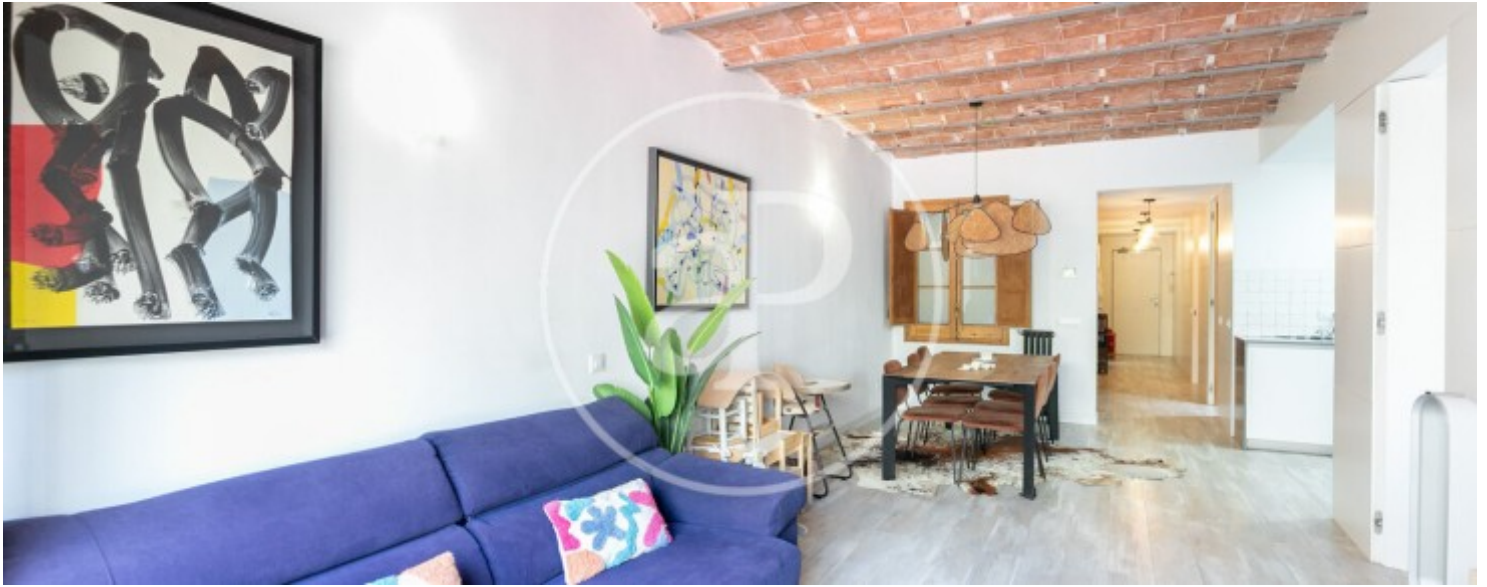
Eixample Dreta, Barcelona

REF. VB2506057



Eixample Dreta, Barcelona

REF. VB2506057



Eixample Dreta, Barcelona

REF. VB2506057



The information about any property is not binding to any offer or contract. Any verbal or written declaration made by aProperties with regards to the value or condition of the property should not be considered accurate or factual. The pictures make reference to some parts of the property at the times that they were taken. The areas, dimensions and distances that are given are approximate and should be checked by the client. The images are computer generated and are just an approximate indication of the real appearance of the property; these may change at any time. The information with regards to the property may also change at any time.

For **more information** or  
to make an appointment

[apropertiesbarcelona@aproperties.es](mailto:apropertiesbarcelona@aproperties.es)  
Tel: 93 528 89 08  
[www.aproperties.es](http://www.aproperties.es)