

Atalaya, Ciudad Lineal

REF. VMN2302002



Flat for sale with Terrace in Atalaya (Ciudad Lineal)

Features

- ✓ Heating
- ✓ AACC
- ✓ Backyard
- ✓ Concierge
- ✓ Boxroom
- ✓ Terrace
- ✓ Lift
- ✓ Has parking

Price

1,295,000 €

Surface

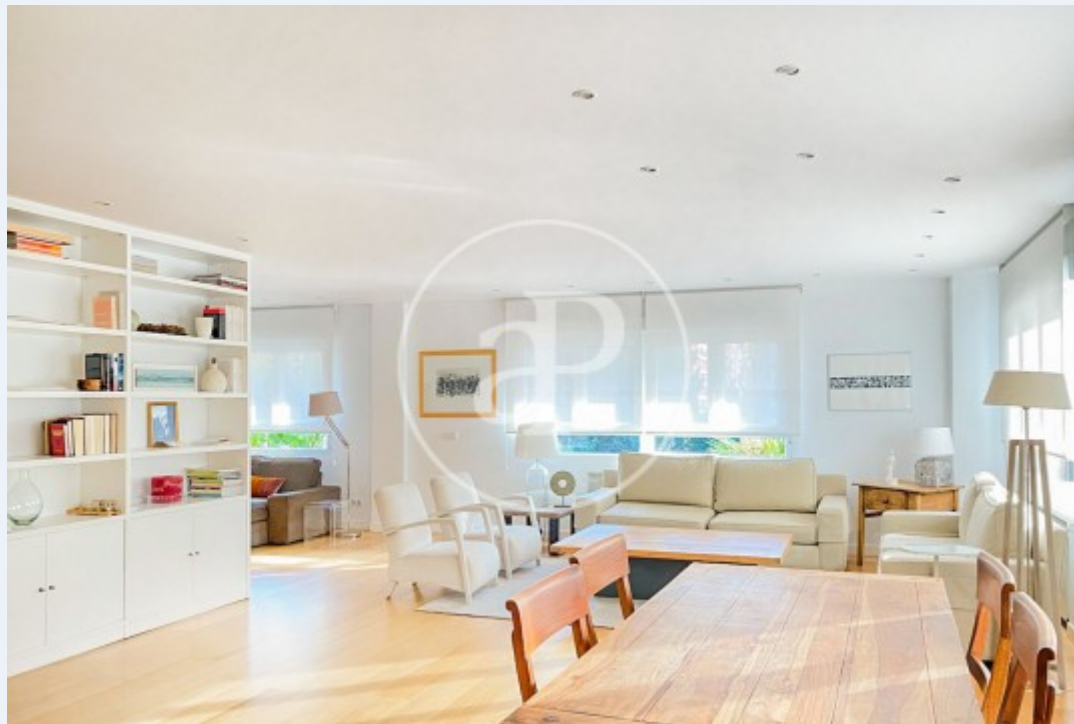
250 m²

Bedrooms

4

Bathrooms

3



SPACIOUS AND BRIGHT RENOVATED APARTMENT IN ARTURO SORIA.

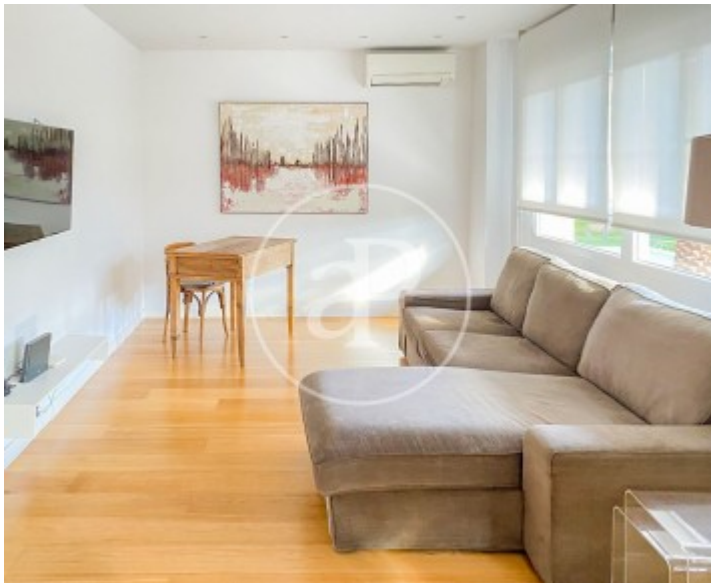
Aproperties presents this exclusive and very bright apartment with integral reform (electricity, plumbing, ceilings, low consumption lights, kitchen, bathrooms, carpentry) that has incorporated spacious rooms full of light, overlooking gardens and mature trees. The natural oak wood floors give it a warmth that complements its modern style. It has a high-end kitchen and office, island open to the living room; also, with an office environment. The master bedroom with en suite bathroom and dressing area with large capacity. Three large bedrooms, two of which share a dressing room. The house has three complete

bathrooms plus a maid's room and ironing room. Ready to move in. All services at hand. A 4 minute drive from Mercadona. Two parking spaces included in the price, gardens, swimming pool, storage room and community room. A 10 minute walk from the Ramón y Cajal School, 5 minutes drive from the Recuerdo and Cardenal Spínola, 3 minutes from International School and Nuevo Velázquez and 8 minutes from the French Lyceum. Can you imagine living here?

Contact us,
we will be happy to assist you,
to offer you more details and information.

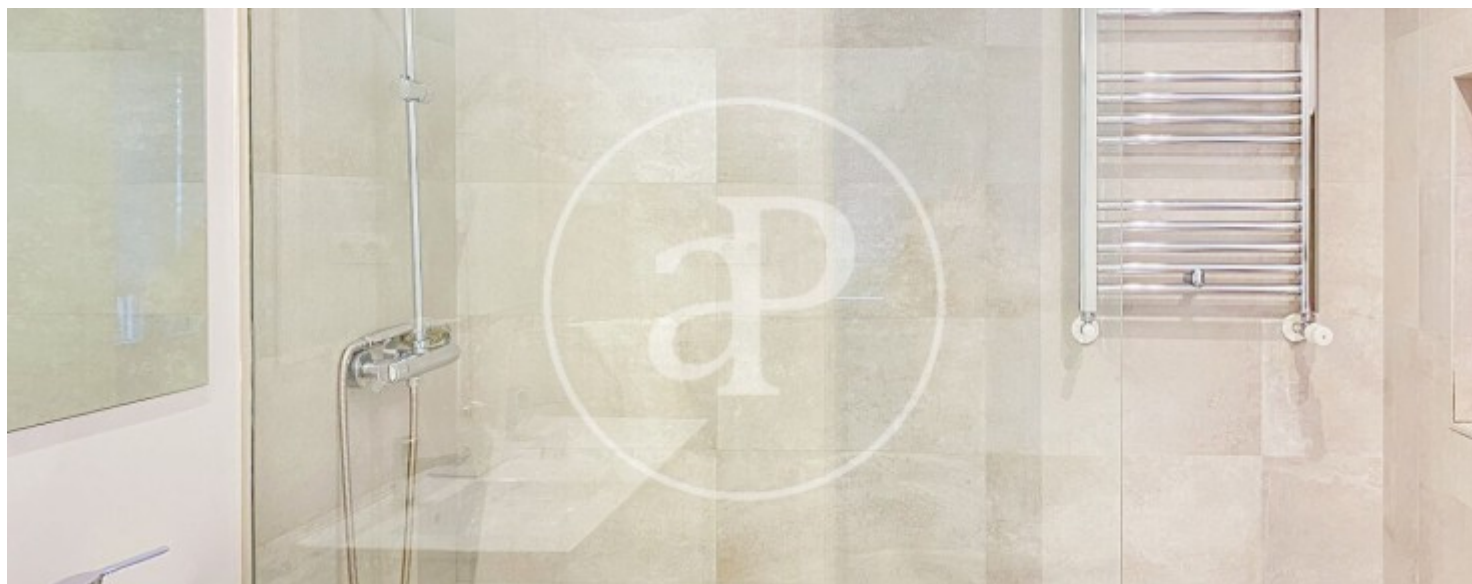
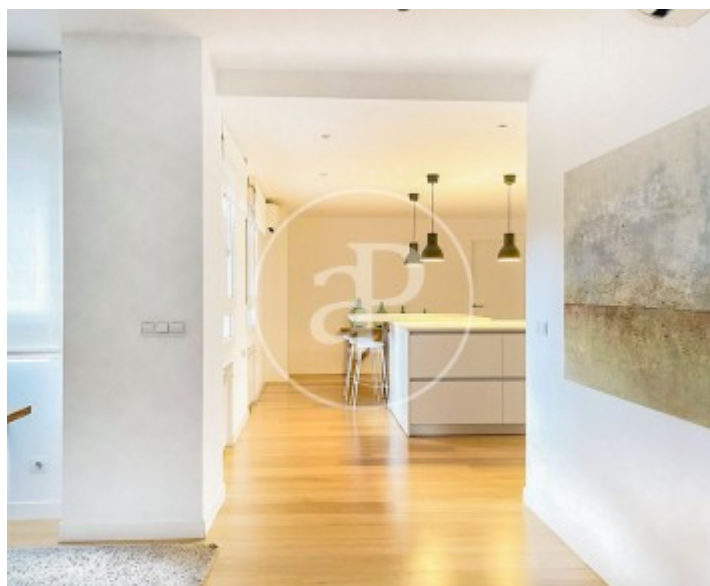
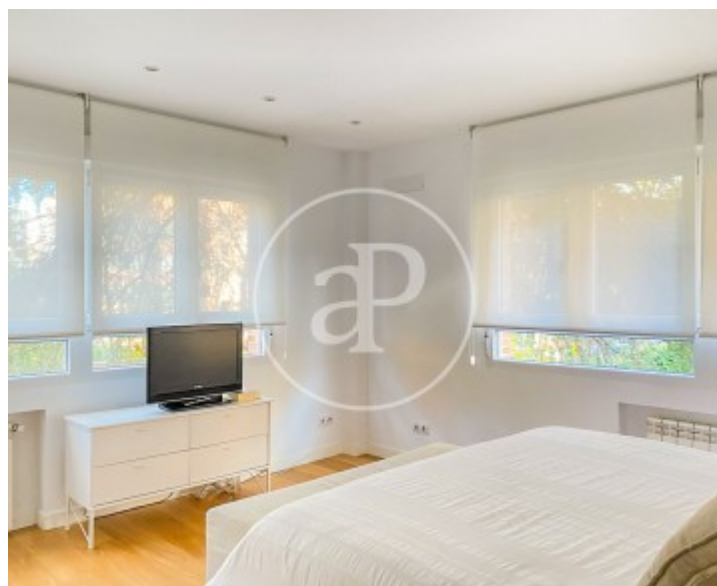
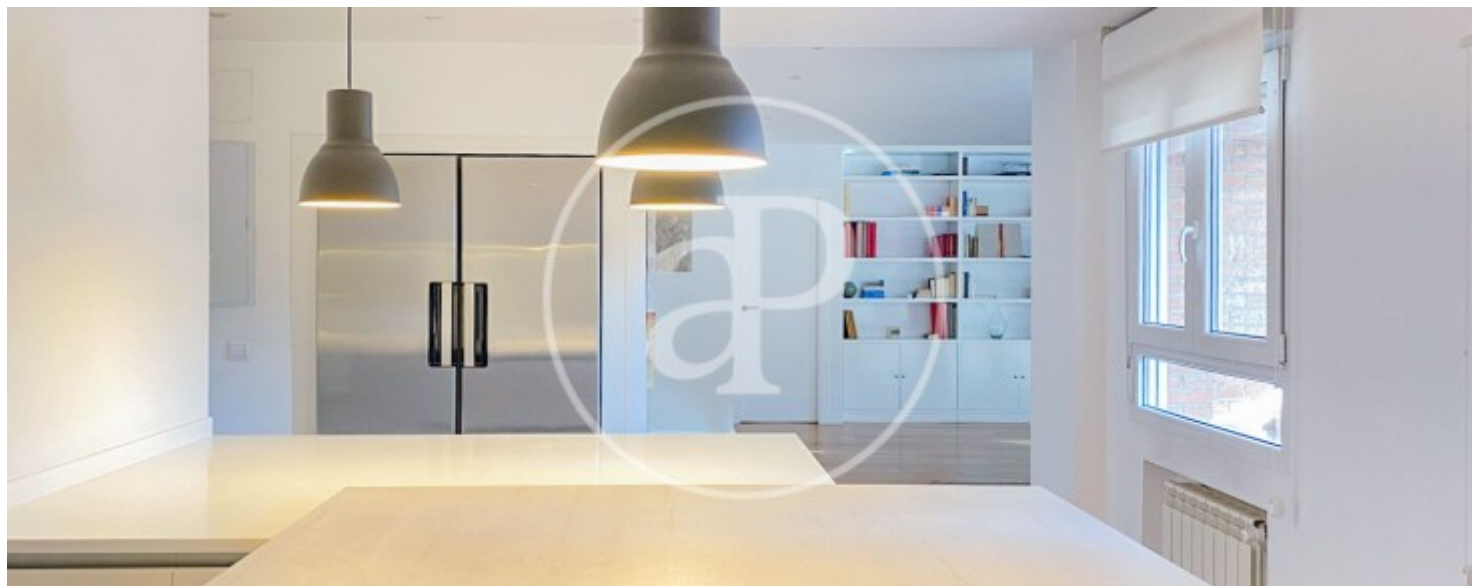
Atalaya, Ciudad Lineal

REF. VMN2302002



Atalaya, Ciudad Lineal

REF. VMN2302002



Atalaya, Ciudad Lineal

REF. VMN2302002



The information about any property is not binding to any offer or contract. Any verbal or written declaration made by aProperties with regards to the value or condition of the property should not be considered accurate or factual. The pictures make reference to some parts of the property at the times that they were taken. The areas, dimensions and distances that are given are approximate and should be checked by the client. The images are computer generated and are just an approximate indication of the real appearance of the property; these may change at any time. The information with regards to the property may also change at any time.



For **more information** or
to make an appointment

apropertiesmadrid@aproperties.es
Tel: 91 800 54 65
www.aproperties.es