

Artà Pueblo, Artà

REF. ONPM2602002

# House for sale in Artà

## Features

- ✓ Views
- ✓ Heating
- ✓ Furnished
- ✓ AACC
- ✓ Terrace
- ✓ Backyard
- ✓ Has parking

Price

**888,000 €**

Surface

**151 m<sup>2</sup>**

Bedrooms

**3**

Bathrooms

**3**



**Newly built townhouse distributed over two floors, located in the northeast of Mallorca, within a residential complex featuring landscaped communal areas and a swimming pool.**

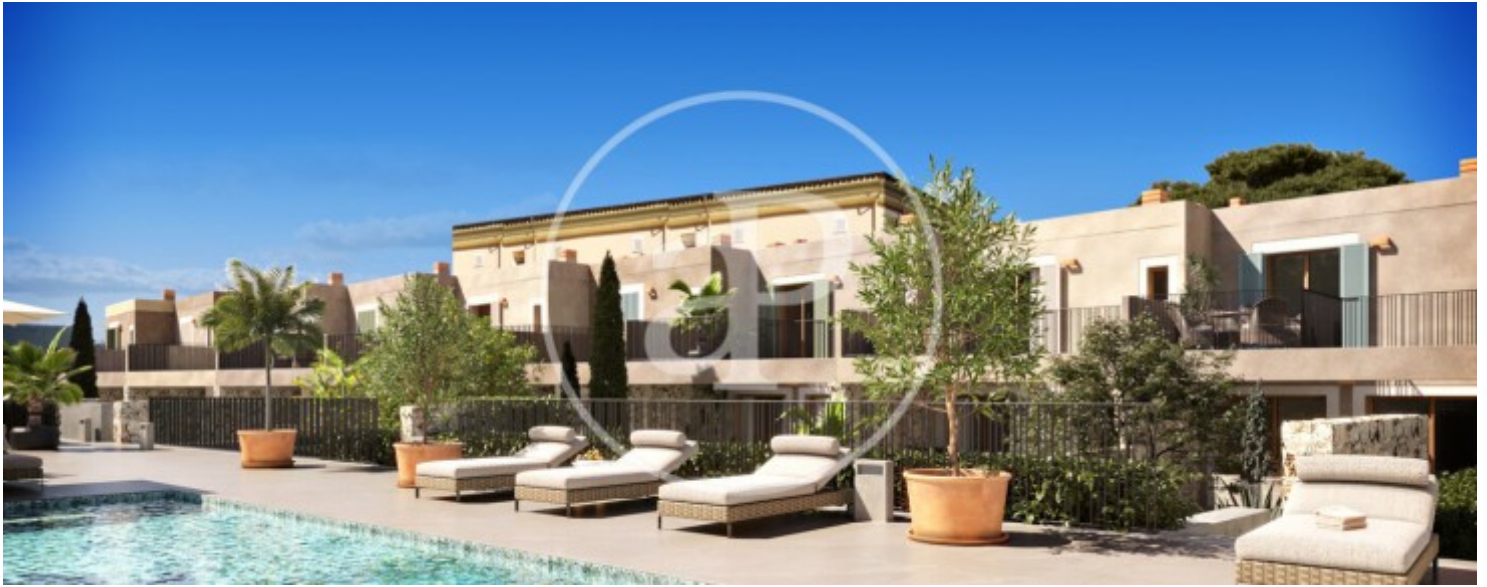
Layout and outdoor spaces: 3 double bedrooms 2 full bathrooms (1 en-suite) 1 guest toilet on the ground floor Large south-facing terraces Private garden with direct access to the communal area Private parking space with independent access Ground floor: Open-plan, bright living-dining area Open, fully furnished and equipped kitchen Direct access to the terrace and garden Guest toilet First floor: 3 double bedrooms Master bedroom with walk-in wardrobe, en-suite bathroom and private

terrace Second full bathroom Specifications and features: Fully equipped kitchen with Siemens appliances (oven, induction hob and extractor hood) Bathrooms fitted with built-in Tres taps, suspended wooden vanity units and walk-in showers Large-format Saloni porcelain flooring (non-slip finish on terraces) Underfloor heating throughout the property South-facing orientation, generous outdoor spaces and high-quality finishes ensure comfort, energy efficiency and excellent natural light all year round. New-build property with key delivery scheduled for September 2026.

**Contact us,**  
we will be happy to assist you,  
to offer you more details and information.

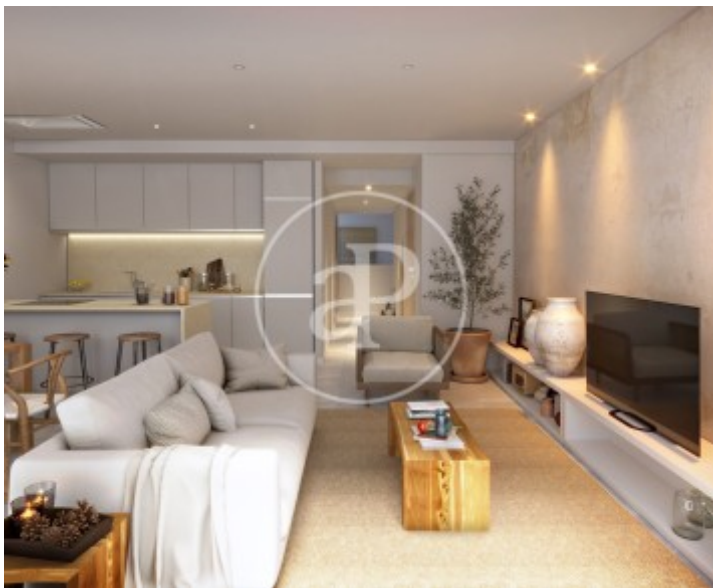
Artà Pueblo, Artà

REF. ONPM2602002



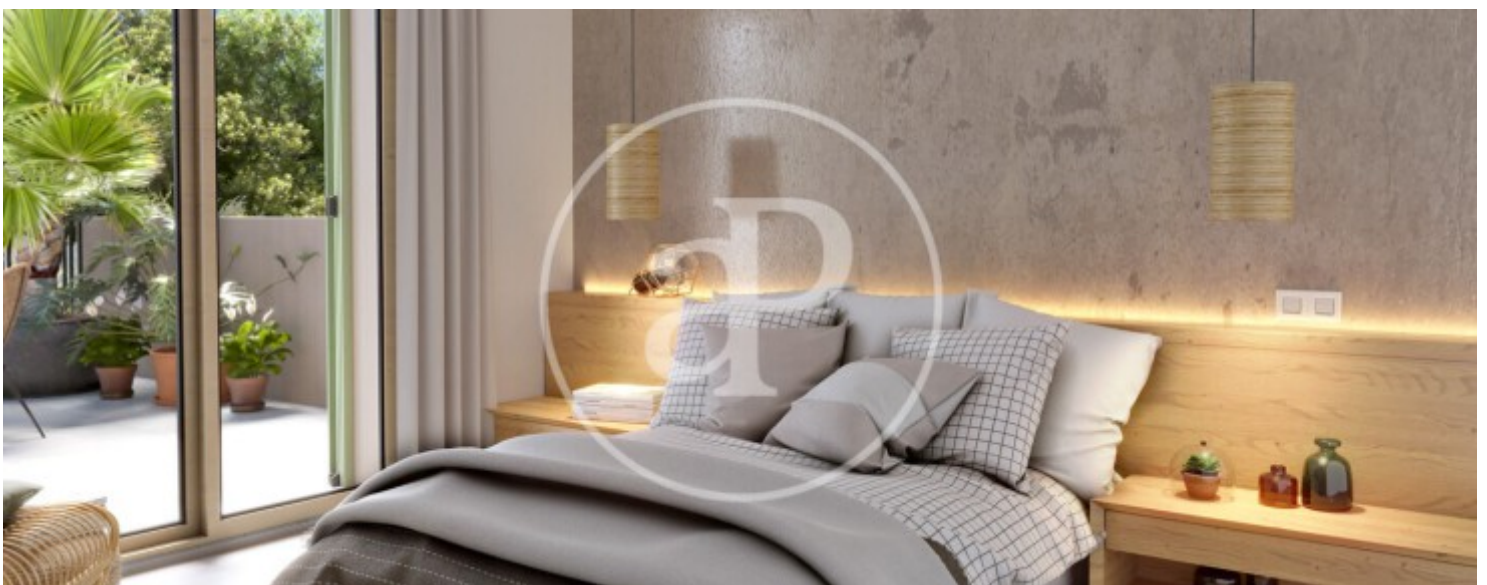
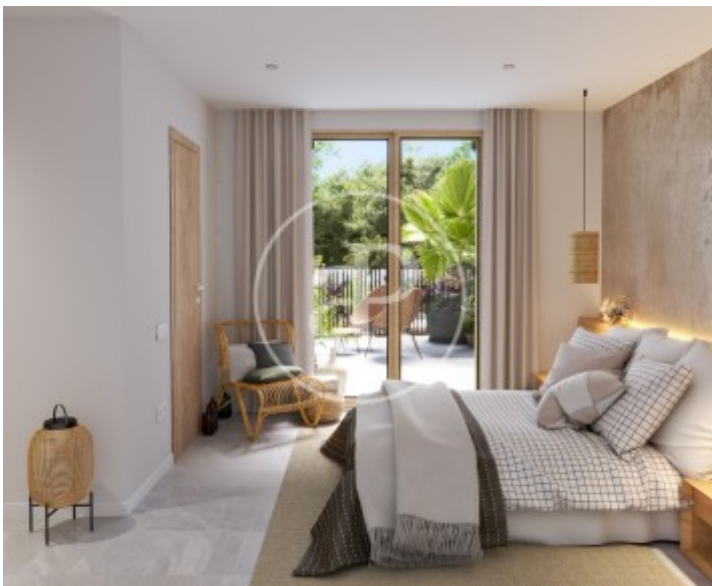
Artà Pueblo, Artà

REF. ONPM2602002



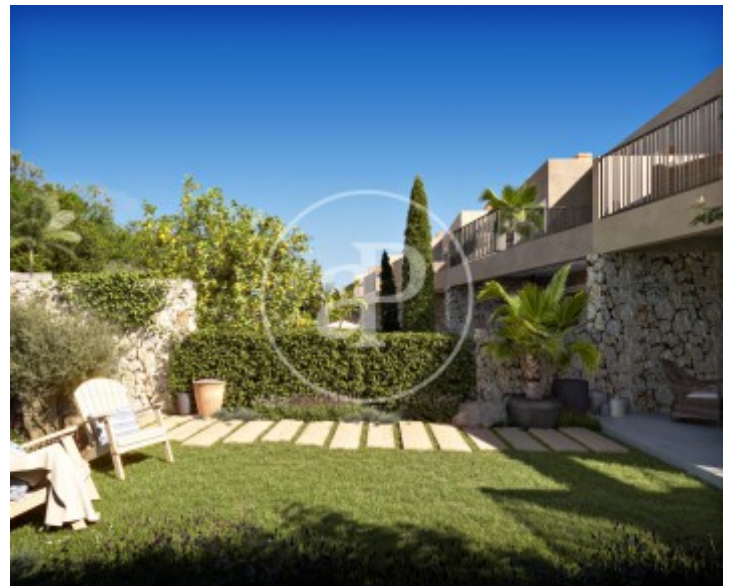
Artà Pueblo, Artà

REF. ONPM2602002



Artà Pueblo, Artà

REF. ONPM2602002



The information about any property is not binding to any offer or contract. Any verbal or written declaration made by aProperties with regards to the value or condition of the property should not be considered accurate or factual. The pictures make reference to some parts of the property at the times that they were taken. The areas, dimensions and distances that are given are approximate and should be checked by the client. The images are computer generated and are just an approximate indication of the real appearance of the property; these may change at any time. The information with regards to the property may also change at any time.

For **more information** or  
to make an appointment

[apropertiespalma@aproperties.es](mailto:apropertiespalma@aproperties.es)  
Tel: 871 16 01 60  
[www.aproperties.es](http://www.aproperties.es)