

Valdemarín, Aravaca

REF. VMO2511003

Flat for sale in Valdemarín

Features

- ✓ Heating
- ✓ AACC
- ✓ Concierge
- ✓ Boxroom
- ✓ Lift
- ✓ Has parking

Price
1,190,000 €

Surface
212 m²

Bedrooms
4

Bathrooms
4



In the heart of Valdemarín (Moncloa – Aravaca), one of Madrid's most sought-after and elegant residential areas, lies this home that combines comfort, style, and quality of life.

With a highly functional layout, it offers three spacious bedrooms, two bathrooms (one en suite), and a guest toilet. It also includes a staff bedroom and bathroom, easily integrated into the main living area if the original four-bedroom layout is desired. The bathrooms and guest toilet have been tastefully renovated, as has the kitchen, updated just five years ago with high-quality materials and a modern, practical design. Its abundant natural light, pleasant tree-lined views,

and tranquil atmosphere create a welcoming and cheerful space. It features ducted air conditioning, natural gas heating, two parking spaces, and a storage room, providing added comfort and convenience. This home is part of a high-end private residential complex with security, extensive green spaces, a swimming pool, paddle tennis courts, and a children's play area—perfect for enjoying time with family or relaxing after a long day at work. Located just minutes from the center of Madrid, with excellent transport links, prestigious schools, and nearby shopping areas, this property offers...

Contact us,
we will be happy to assist you,
to offer you more details and information.

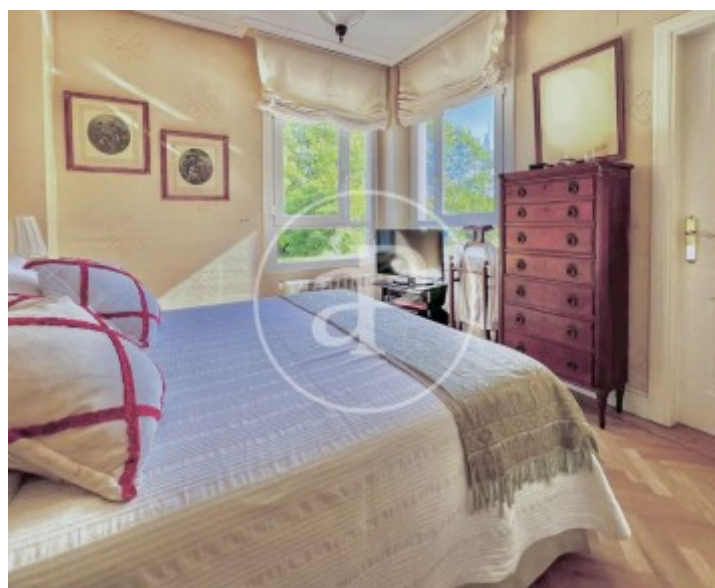
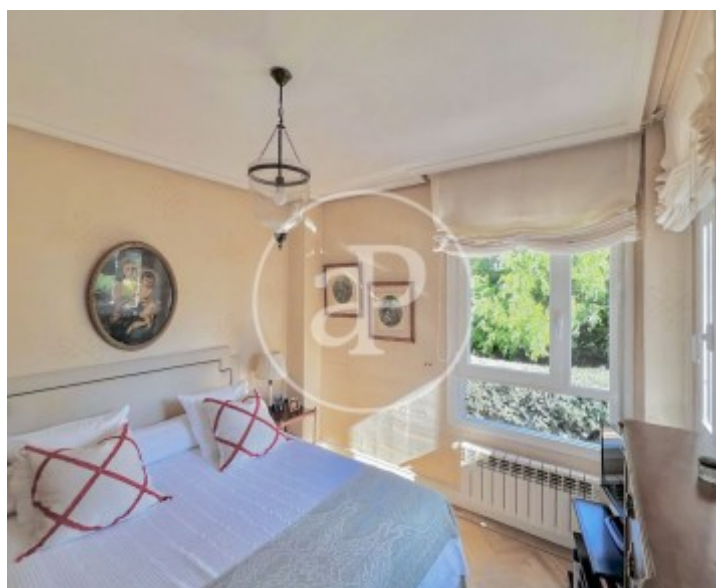
Valdemarín, Aravaca

REF. VMO2511003



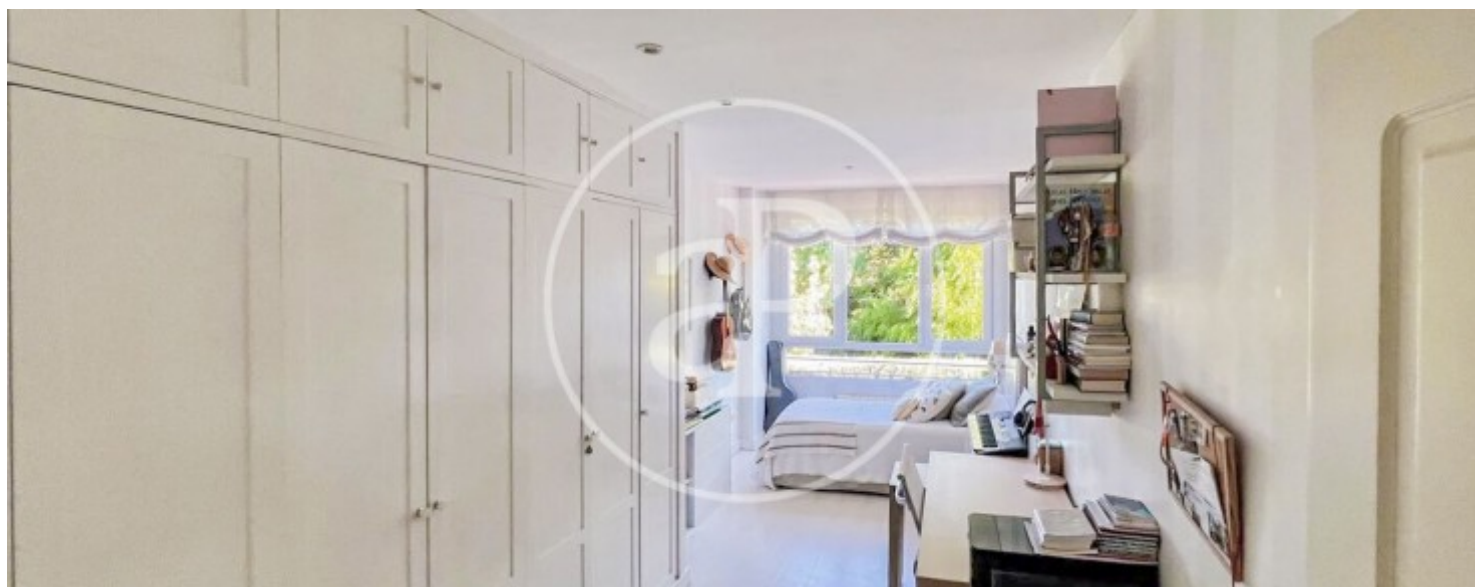
Valdemarín, Aravaca

REF. VMO2511003



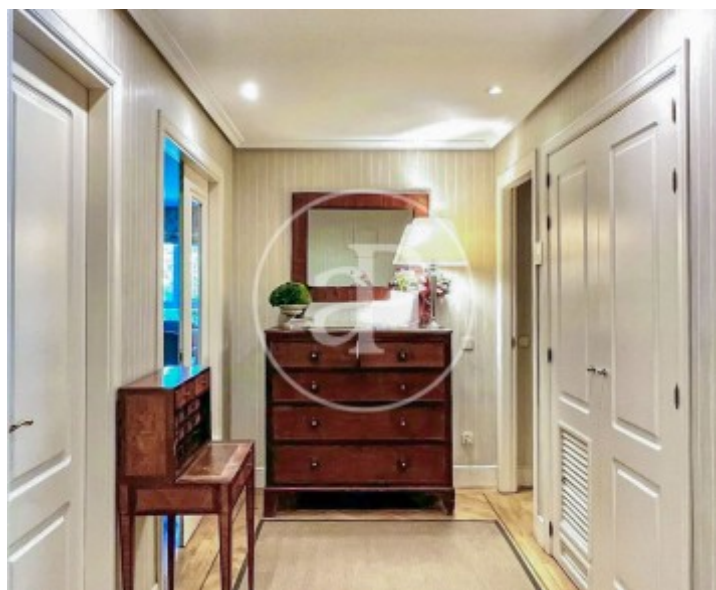
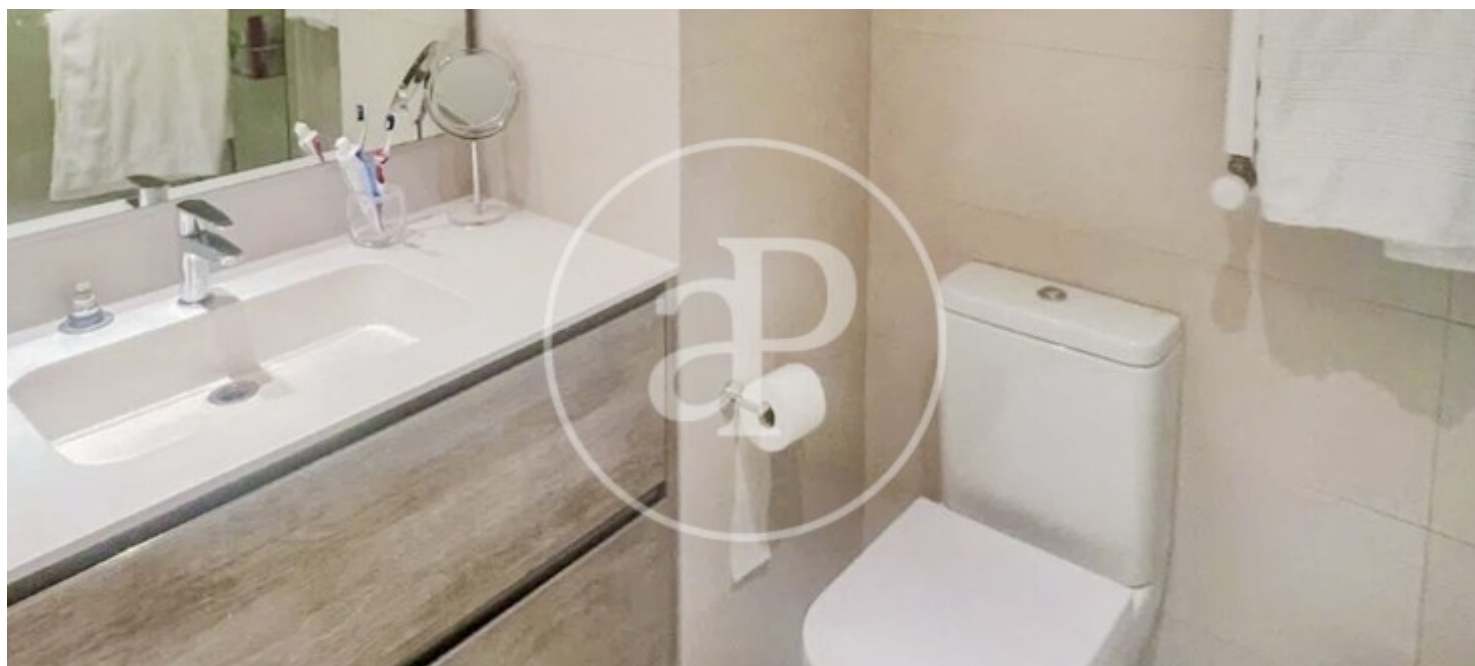
Valdemarín, Aravaca

REF. VMO2511003



Valdemarín, Aravaca

REF. VMO2511003



The information about any property is not binding to any offer or contract. Any verbal or written declaration made by aProperties with regards to the value or condition of the property should not be considered accurate or factual. The pictures make reference to some parts of the property at the times that they were taken. The areas, dimensions and distances that are given are approximate and should be checked by the client. The images are computer generated and are just an approximate indication of the real appearance of the property; these may change at any time. The information with regards to the property may also change at any time.

For **more information** or
to make an appointment

apropertiesmadrid@aproperties.es
Tel: 91 800 54 65
www.aproperties.es