

El Plantío, Aravaca

REF. AMO2404001

# Villa for rent in El Plantío

## Features

- ✓ Heating
- ✓ Boxroom
- ✓ Terrace
- ✓ Pool
- ✓ Security
- ✓ Furnished
- ✓ AACC
- ✓ Backyard
- ✓ Gym
- ✓ Has parking

Surface

**959 m<sup>2</sup>**

Plot surface

**3,100 m<sup>2</sup>**

Bedrooms

**6**

Bathrooms

**8**



Price

**Price upon request**

**In one of the best areas of Madrid, very close to the palace of La Zarzuela, is located this majestic villa with a plot of 3.**

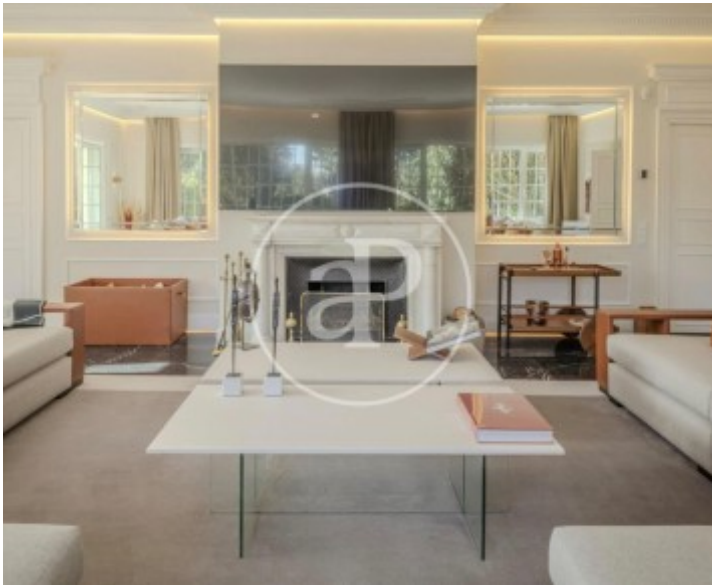
100m<sup>2</sup>. The house has two floors plus basement. On the first floor there is a grand entrance hall, with spectacular marble floor and staircase. The living room, with Italian fireplace of the nineteenth century has access to a porch with movable enclosure communicates with the dining room, with the office, and with a fantastic library. The kitchen is equipped with high-end appliances and has an office area. On this floor there is also a bedroom with en suite bathroom and a guest toilet. On the second floor there are four bedrooms, all with

terrace, two of them en suite and the other two share a bathroom. All these rooms have large capacity closets and double height for hanging clothes. In the basement, with separate entrance, is the service area, laundry area, living room, large cellar and pantry. This house has the best finishes and qualities, Hans-Grohe, Fontini and Nobili faucets, designer toilets, closets, oak and teak floors, automated electricity consumption manager and alarm. The villa has a magnificent pool with salinized water, water tank and water pressure machine, plus a garden with irrigation and gardening service...

**Contact us,**  
we will be happy to assist you,  
to offer you more details and information.

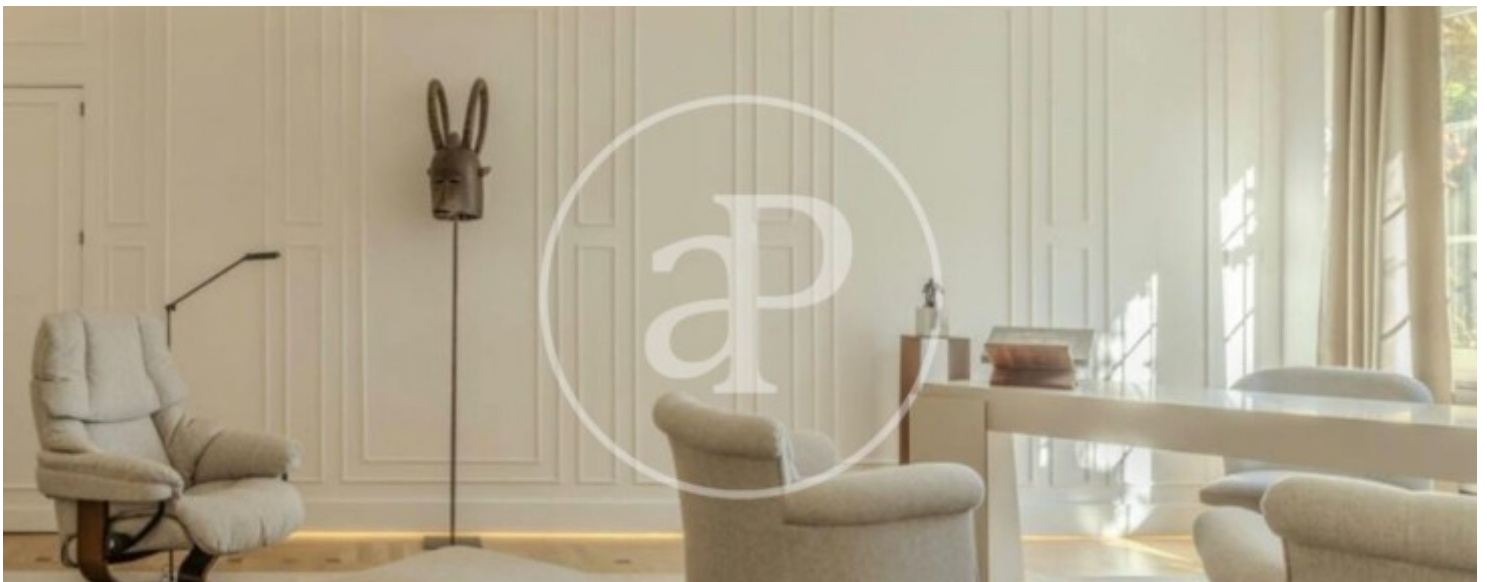
El Plantío, Aravaca

REF. AMO2404001



El Plantío, Aravaca

REF. AMO2404001



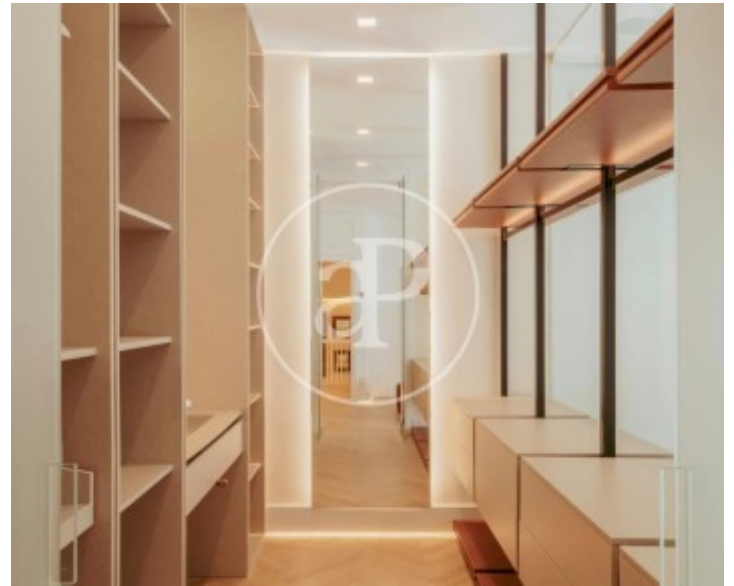
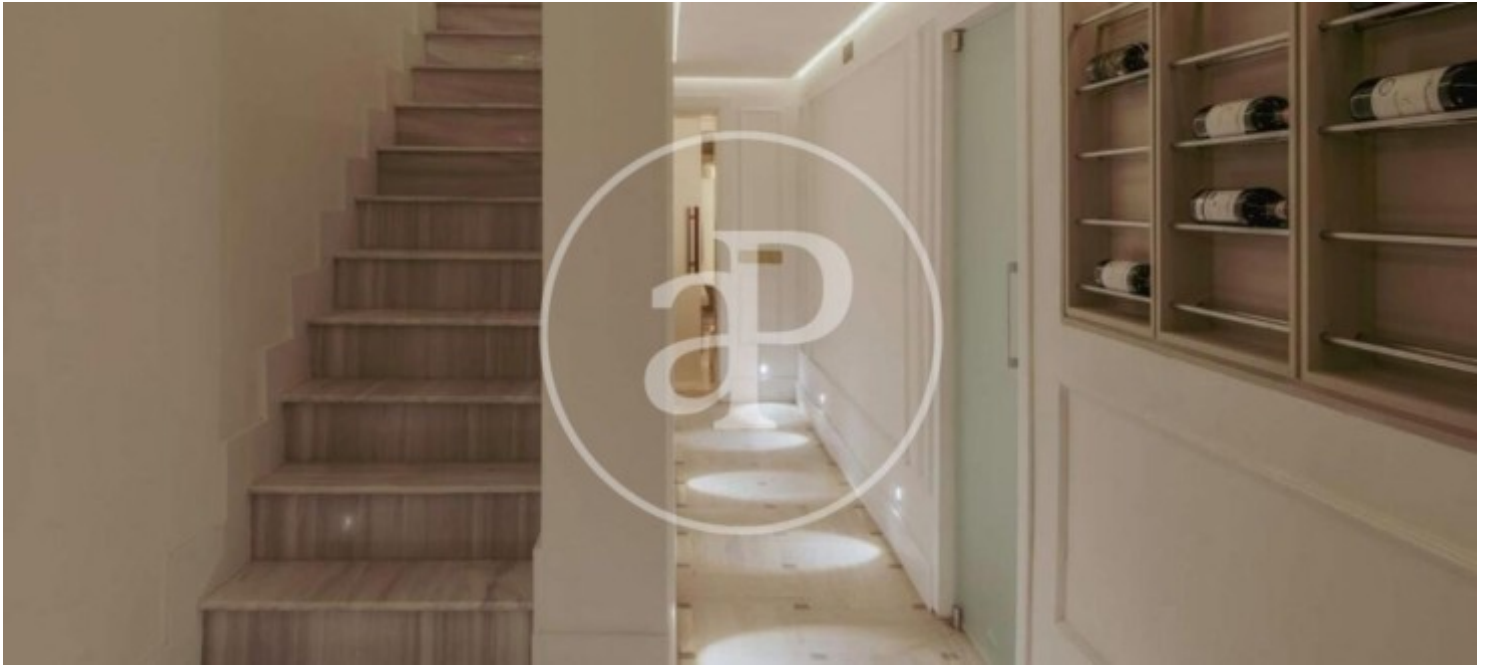
El Plantío, Aravaca

REF. AMO2404001



El Plantío, Aravaca

REF. AMO2404001



The information about any property is not binding to any offer or contract. Any verbal or written declaration made by aProperties with regards to the value or condition of the property should not be considered accurate or factual. The pictures make reference to some parts of the property at the times that they were taken. The areas, dimensions and distances that are given are approximate and should be checked by the client. The images are computer generated and are just an approximate indication of the real appearance of the property; these may change at any time. The information with regards to the property may also change at any time.

For **more information** or  
to make an appointment

[apropertiesmadrid@aproperties.es](mailto:apropertiesmadrid@aproperties.es)  
Tel: 91 800 54 65  
[www.aproperties.es](http://www.aproperties.es)