



(El Plantío)

Ref: ONM2506004



### *New building (work) for sale in El Plantío (Aravaca)*

Residencial Terra is a unique offering of just three newly built semi-detached villas that redefine the concept of living in one of the most sought-after areas in northwest Madrid. Located in El Plantío, Aravaca, this exclusive development combines cutting-edge design, comfort, and privacy in a well-established and perfectly connected residential setting. Each home has been carefully designed to offer spaciousness, natural light, and functionality. With over 350 m<sup>2</sup> of built area and private plots of over 250 m<sup>2</sup>, the villas feature a garden, swimming pool, garage, and a spectacular solarium with unobstructed views, ideal for enjoying a sophisticated and relaxed lifestyle. Located in an established residential area, between Avenida de la Victoria and Monte del Pilar in Majadahonda, the homes enjoy excellent connections to the main centers in western Madrid. Renowned shopping centers such as El Corte Inglés, Sexta Avenida, and El Carralero are just minutes away, as well as a wide range of prestigious educational centers. Residencial Terra boasts excellent connectivity, both by road and public transport, with quick access to central Madrid, Pozuelo, [...]

Aravaca / El Plantío

Surface  
354 m<sup>2</sup> - 387 m<sup>2</sup>  
Units  
3  
Completion  
Q2 2027

- ✓ Heating
- ✓ Boxroom
- ✓ AACC
- ✓ Terrace
- ✓ Backyard
- ✓ Pool
- ✓ Has parking

Price from 1,325,000 €

**(El Plantío)**

Ref: ONM2506004

## Units in this development

Type	Unit	Surface	Bedrooms	Bathrooms	Price	State
House	2	354 m <sup>2</sup>	4	3	€ 1,325,000	Available
House	1	387 m <sup>2</sup>	4	3	€ 1,350,000	Available

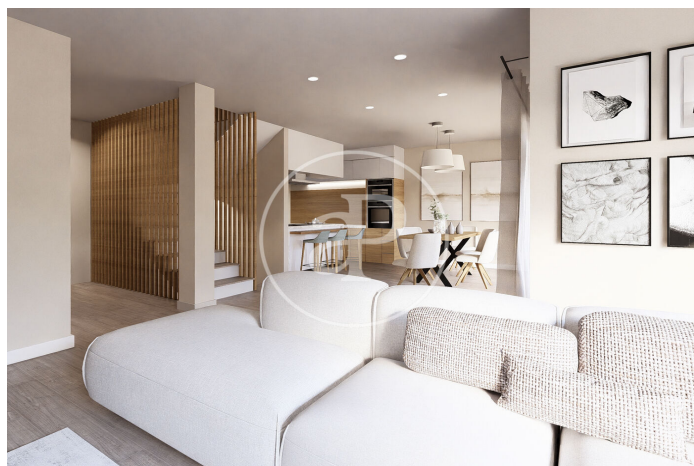
(El Plantío)

Ref: ONM2506004



(El Plantío)

Ref: ONM2506004



(El Plantío)

Ref: ONM2506004



The information about any property is not binding to any offer or contract. Any verbal or written declaration made by aProperties with regards to the value or condition of the property should not be considered accurate or factual. The pictures make reference to some parts of the property at the times that they were taken. The areas, dimensions and distances that are given are approximate and should be checked by the client. The images are computer generated and are just an approximate indication of the real appearance of the property; these may change at any time. The information with regards to the property may also change at any time.

Contact us today for more information or to arrange a viewing

Tel: 91 800 54 65 [apropertiesmadrid@aproperties.es](mailto:apropertiesmadrid@aproperties.es) <https://www.aproperties.es>