

El Plantío, Aravaca

REF. VMO2604009

Detached house for sale in Aravaca

Features

- ✓ Heating
- ✓ Backyard
- ✓ Has parking
- ✓ AACC
- ✓ Pool

Price
2,480,000 €

Surface
252 m²

Bedrooms
3

Bathrooms
3



Exclusive independent house with great personality, built in 1930, located in one of the most popular residential areas of Aravaca, El Plantío.

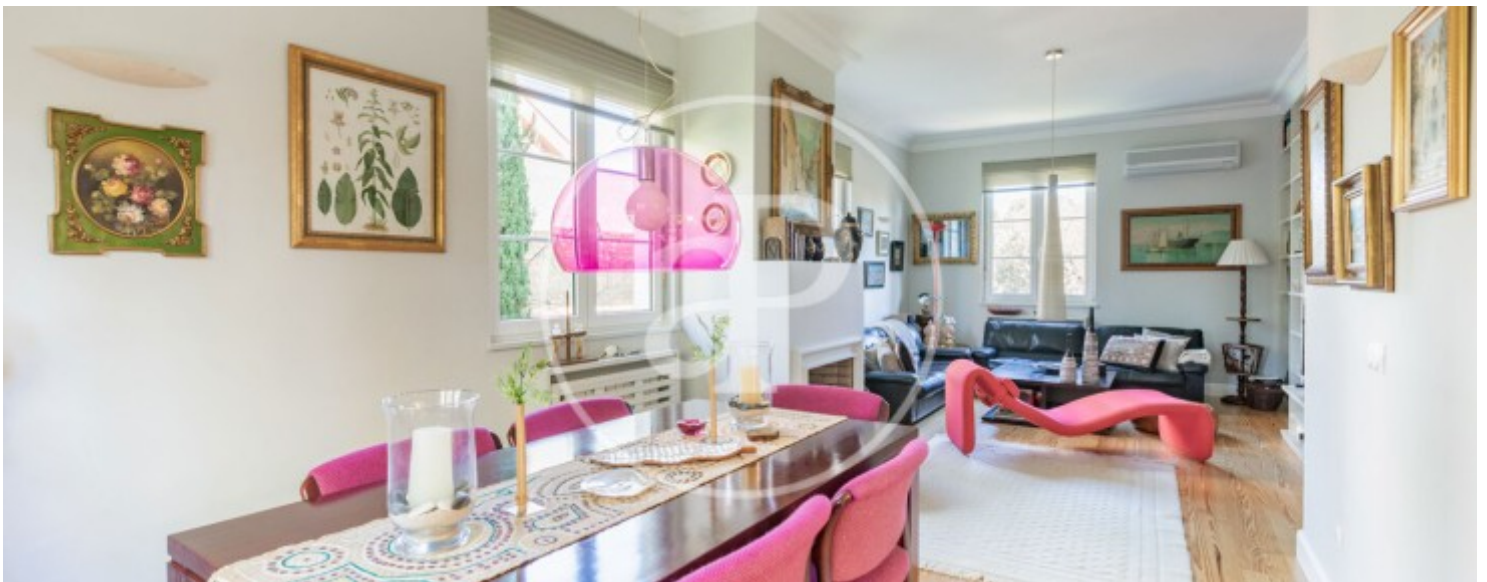
The house has 252 m2 built distributed on two floors, on a magnificent plot of 684 m2 with consolidated garden, gazebo and private pool. It stands out for its excellent luminosity and the spaciousness of its rooms, with ceilings up to 4 meters high on the main floor, providing a great sense of space and elegance. The property has oil heating and air conditioning in several rooms, ensuring comfort throughout the year. It also includes a covered and an outdoor parking space. Distribution of housing: Main floor:

spacious entrance hall, guest toilet, living-dining room with fireplace, large master bedroom with en suite bathroom, and kitchen with office. Lower floor: two additional bedrooms (one of them with bathroom), large garage currently used as a multifunctional area and practical laundry area. In addition, the house has a large covered floor of more than 100 m², ideal for developing a refurbishment project and adapting it to the needs of future owners. A unique opportunity to live in a quiet and exclusive environment, with excellent communications and all nearby services in Aravaca. Can you...

Contact us,
we will be happy to assist you,
to offer you more details and information.

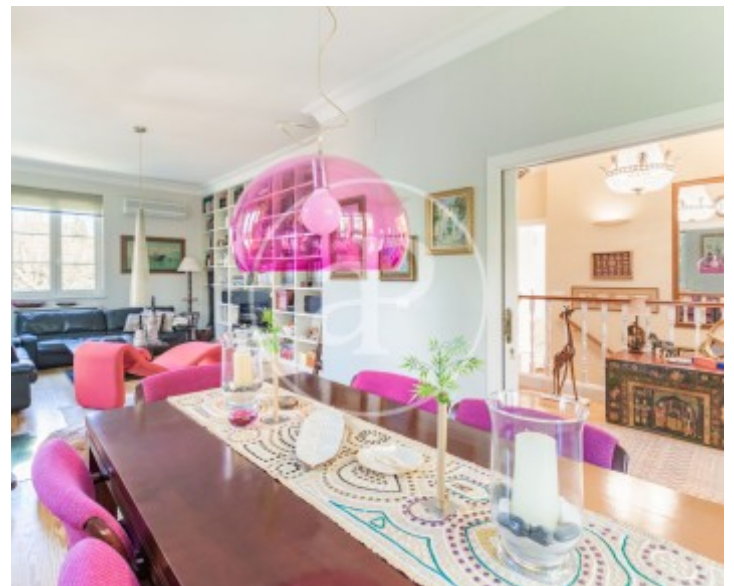
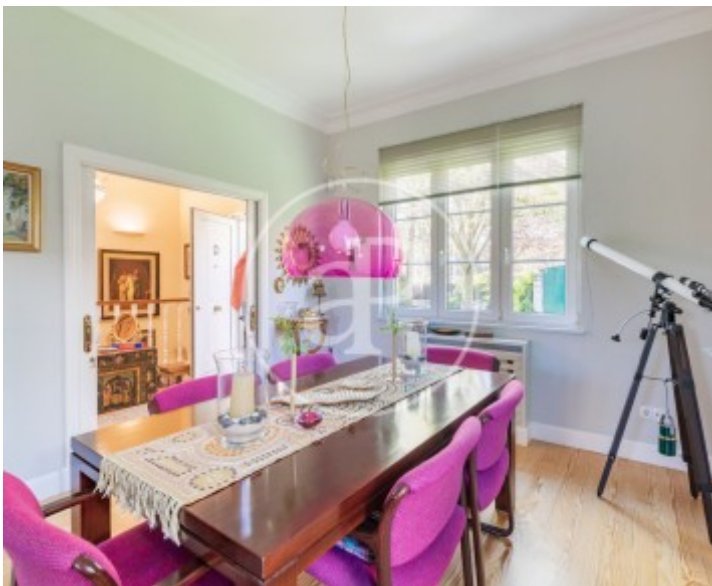
El Plantío, Aravaca

REF. VMO2604009



El Plantío, Aravaca

REF. VMO2604009



El Plantío, Aravaca

REF. VMO2604009



El Plantío, Aravaca

REF. VMO2604009



The information about any property is not binding to any offer or contract. Any verbal or written declaration made by aProperties with regards to the value or condition of the property should not be considered accurate or factual. The pictures make reference to some parts of the property at the times that they were taken. The areas, dimensions and distances that are given are approximate and should be checked by the client. The images are computer generated and are just an approximate indication of the real appearance of the property; these may change at any time. The information with regards to the property may also change at any time.

For **more information** or
to make an appointment

apropertiesmadrid@aproperties.es
Tel: 91 800 54 65
www.aproperties.es