

(Aravaca)

Ref: ONM2110004



New building (work) for sale with terrace in Aravaca (Aravaca)

On a closed plot of 4,303.28sqm, with security, a set of magnificent apartments rises distributed in 3 buildings, with views of the skyline and the mountains of Madrid. The architecture has played with natural stone facades, rectilinear lattices and a classic and elegant design. There are 17 exclusive homes distributed in 3 buildings with ground floor plus 2 floors. 24 hour security. Closed and fenced plot, with gardens and private pool, garages and storage rooms. Apartments with 3 bedrooms plus the service one, with closed surfaces of 185 to 215 m2 and a living room of 40 to 60sqm. Grounds with gardens of 250 to 300sqm, first and attics with large terraces. Underfloor heating, air conditioning, exterior carpentry with double glazing. The true luxury lies in the exclusivity and the services. Surveillance in the urbanization, concierge service, collection of packages and reception of visits, among other services, are fundamental pillars in our project. The tranquility and exclusivity of Aravaca, as well as a wide range of leisure activities and excellent communications, are the main arguments that make this the perfect location. Schools, hospitals, green areas, security and [...]

Aravaca / Aravaca

Unit 1 Bloque 5 - Puerta A
Completion Q4 2021

FEATURES

Surface 217 m² / 13 m² terrace
4 Rooms
3 Toilets 1 Restrooms

- ✓ Views
- ✓ Heating
- ✓ Boxroom
- ✓ AACC
- ✓ Terrace
- ✓ Backyard
- ✓ Pool
- ✓ Lift
- ✓ Security
- ✓ Concierge
- ✓ Has parking

PRICE UPON REQUEST

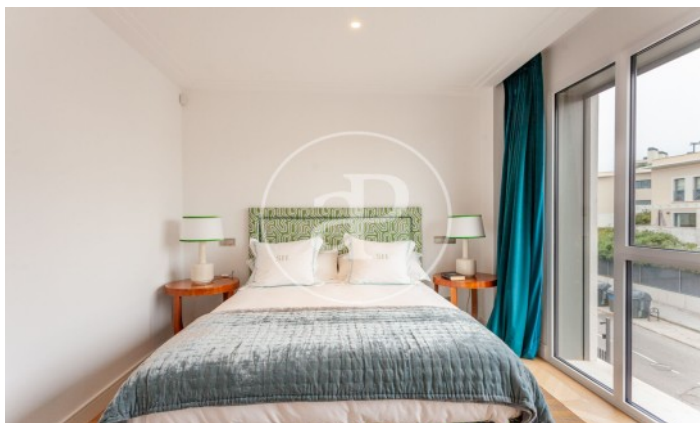
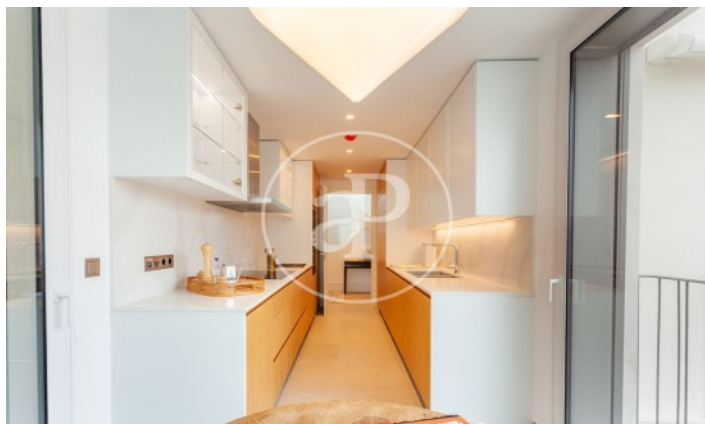
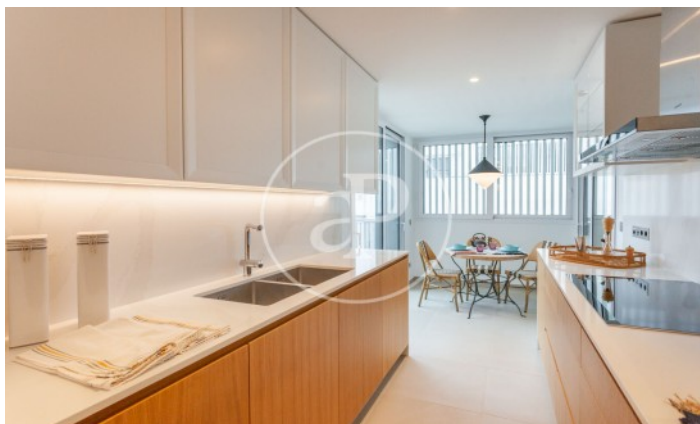
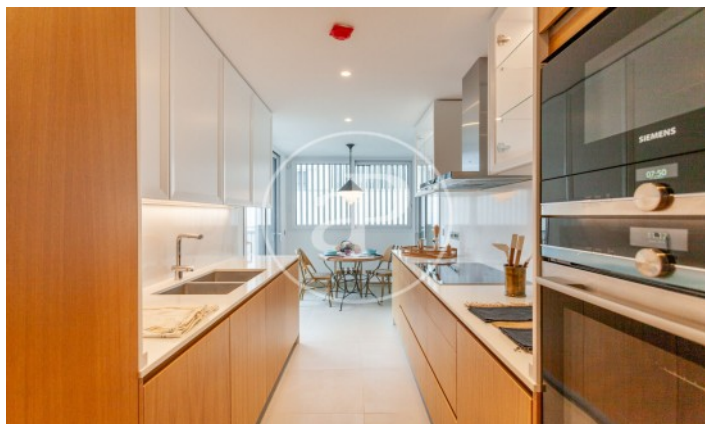
(Aravaca)

Ref: ONM2110004



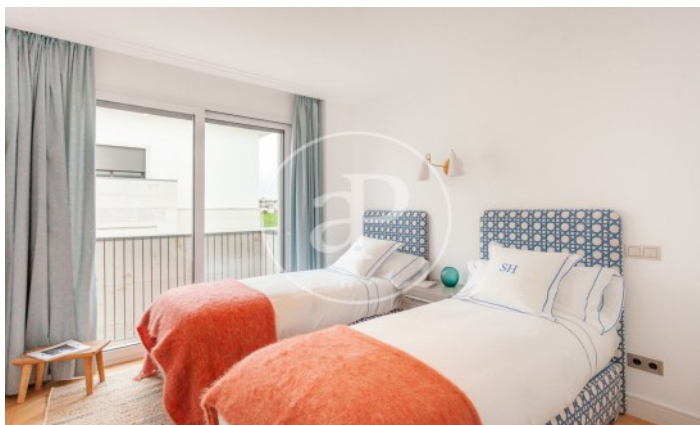
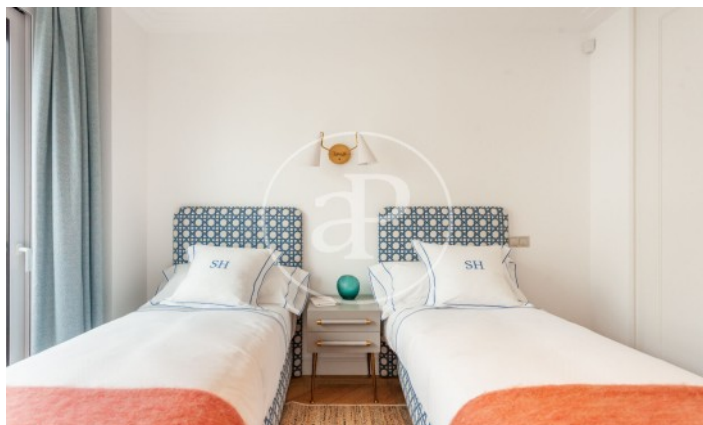
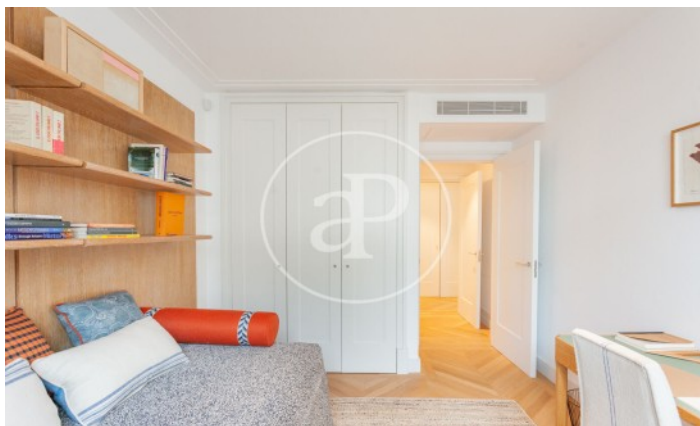
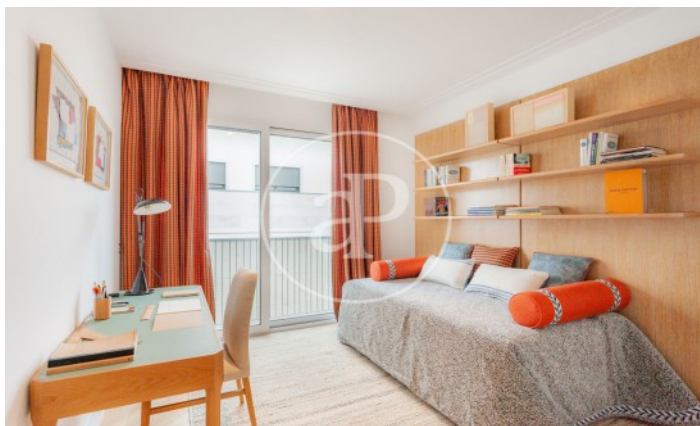
(Aravaca)

Ref: ONM2110004



(Aravaca)

Ref: ONM2110004



The information about any property is not binding to any offer or contract. Any verbal or written declaration made by aProperties with regards to the value or condition of the property should not be considered accurate or factual. The pictures make reference to some parts of the property at the times that they were taken. The areas, dimensions and distances that are given are approximate and should be checked by the client. The images are computer generated and are just an approximate indication of the real appearance of the property; these may change at any time. The information with regards to the property may also change at any time.

Contact us today for more information or to arrange a viewing

Tel: 91 800 54 65

apropertiesmadrid@aproperties.es

<https://www.aproperties.es>