

(Sant Elm)

Ref: ONPM2601002



Apartment for sale in Sant Elm

LAST 2 UNITS FOR SALE The apartments feature two communal swimming pools, one of them for children, as well as landscaped garden areas where you can enjoy the excellent Mediterranean climate. All this is just 100 metres from the nearest cove. Each property is delivered with an outdoor parking space within the complex. Eclipse apartments, with a southeast orientation, offer three double bedrooms and two full bathrooms. The open-plan kitchen integrated into the living area enhances the feeling of spaciousness and allows abundant natural light to flow throughout the home. Ground-floor apartments boast large terraces with a covered porch and private-use gardens. The penthouses, which enjoy sea views, will have access to their own private rooftop solarium via a built-in staircase from the terrace. San Telmo is a picturesque village with narrow, cobbled streets winding between whitewashed houses and small shops and restaurants. The main square is the heart of the village, where locals and visitors gather to enjoy outdoor dining or simply stroll and soak up the peaceful atmosphere. From San Telmo's harbour, visitors can also take boat trips to Dragonera Island, a protected [...]

Andratx / Sant Elm

Unit bj 2

Completion Q1 2026

FEATURES

Surface 91 m² / 34 m² terrace

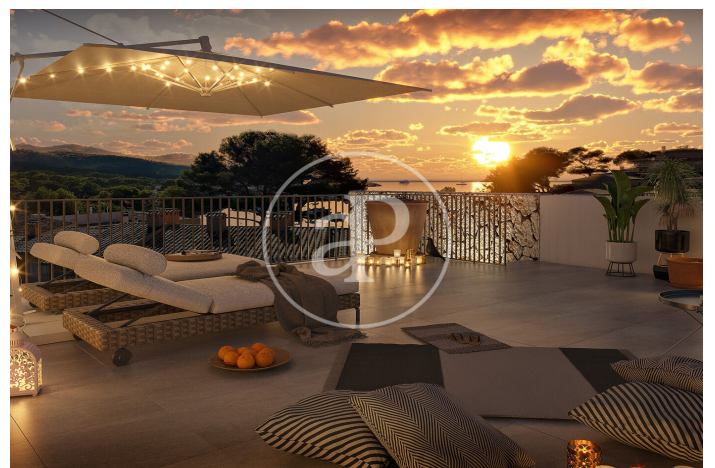
3 Rooms

3 Toilets

- ✓ Views
- ✓ Heating
- ✓ Furnished
- ✓ Boxroom
- ✓ AACC
- ✓ Terrace
- ✓ Backyard
- ✓ Pool
- ✓ Security
- ✓ Has parking

(Sant Elm)

Ref: ONPM2601002



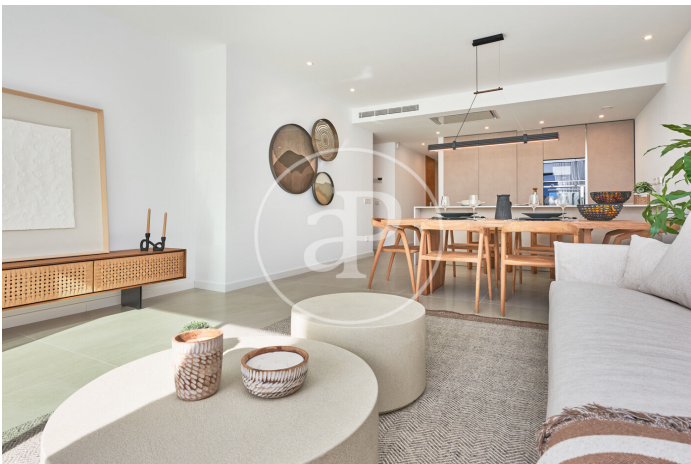
(Sant Elm)

Ref: ONPM2601002



(Sant Elm)

Ref: ONPM2601002



The information about any property is not binding to any offer or contract. Any verbal or written declaration made by aProperties with regards to the value or condition of the property should not be considered accurate or factual. The pictures make reference to some parts of the property at the times that they were taken. The areas, dimensions and distances that are given are approximate and should be checked by the client. The images are computer generated and are just an approximate indication of the real appearance of the property; these may change at any time. The information with regards to the property may also change at any time.

Contact us today for more information or to arrange a viewing

Tel: 871 16 01 60 apropertiespalma@aproperties.es <https://www.aproperties.es>