

Port d'Andratx, Andratx

REF. APMS2309045



Duplex for rent in Puerto de Andratx

Features

- ✓ Views
- ✓ Terrace
- ✓ Has parking
- ✓ Furnished
- ✓ Backyard

Price

3,000 €

Surface

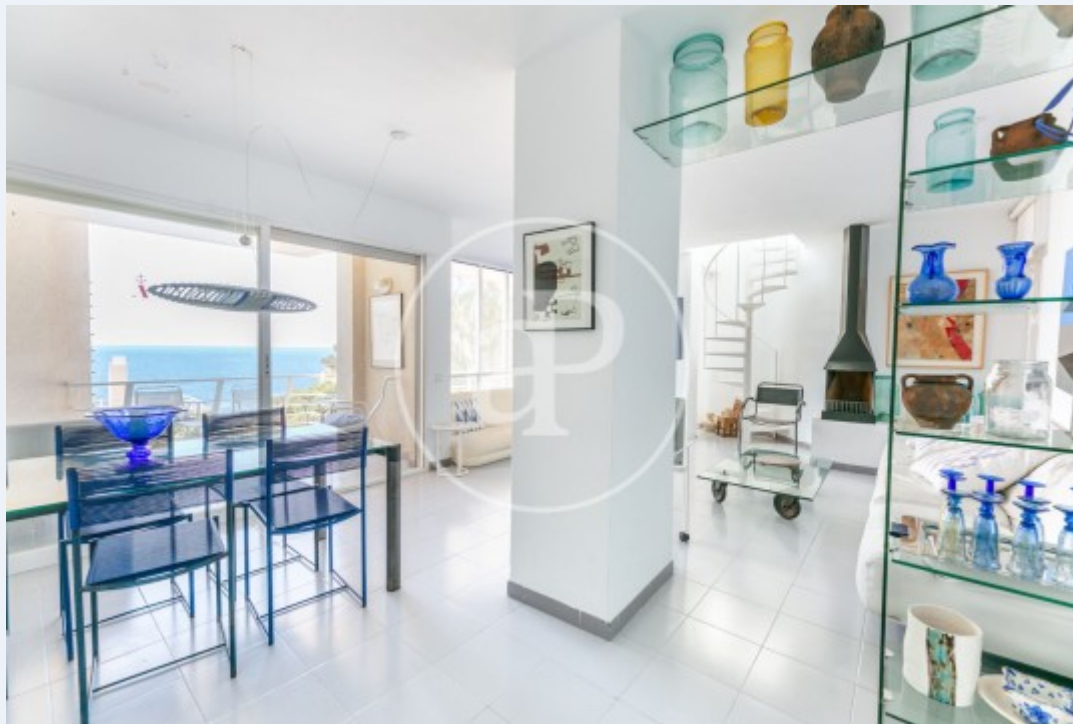
150 m²

Bedrooms

4

Bathrooms

3



AVAILABLE FROM NOVEMBER 2023 TO JULY 2024.

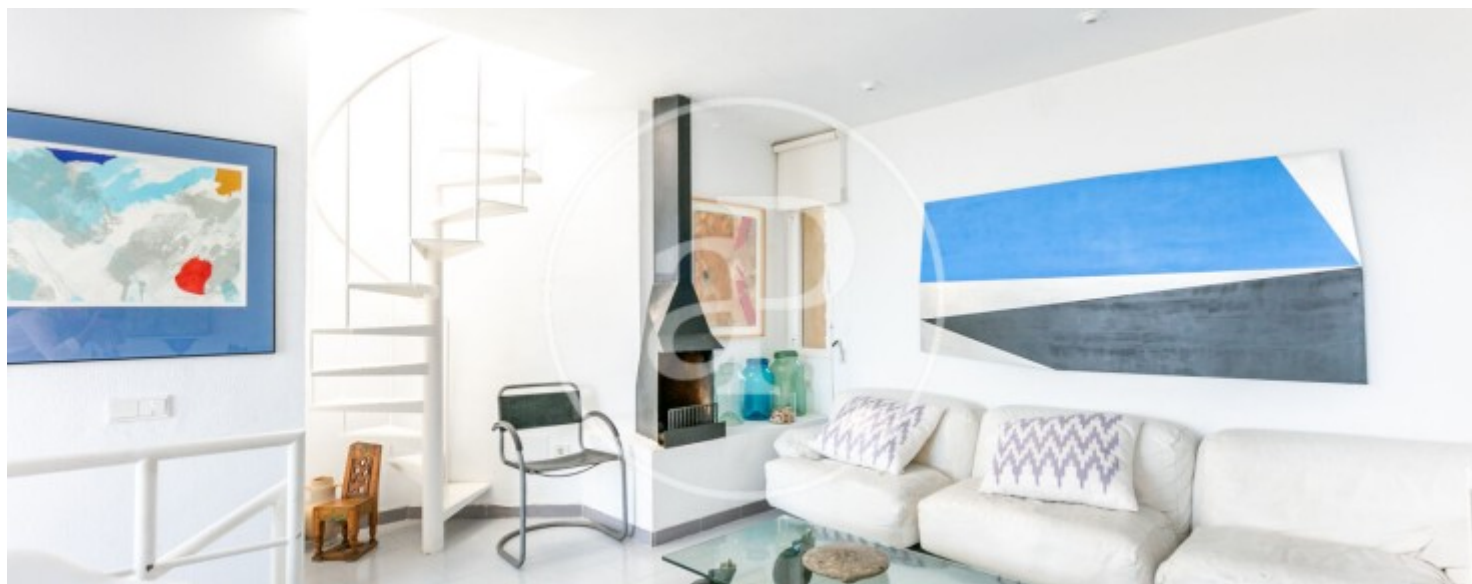
In the exclusive area of Puerto de Andratx we find this duplex of 150 sqm with a solarium terrace of 70 sqm. From the entrance door of the property we access directly to the living-dining room, which has large windows that give it a lot of light. It has access to a large terrace with sea views. The kitchen is fully equipped and has a separate laundry room with washing machine and dryer. On the same floor there is a single bedroom with en-suite bathroom with shower. A spiral staircase leads to the tastefully furnished roof terrace with kitchen, ideal for storing patio furniture. Another staircase leads to

the ground floor and the sleeping area, where there are three double bedrooms with fitted wardrobes and two bathrooms with bathtub, one of them in the master bedroom. Community fees, water and IBI are included in the rent. Electricity is to be paid by the tenant. Puerto de Andratx, an elegant place to live. It is surrounded by all kinds of shops, restaurants and bars and has a good bus connection to the centre of Palma. Please ask for the price from March 2024. Can you imagine living here, we are waiting for your call!

Contact us,
we will be happy to assist you,
to offer you more details and information.

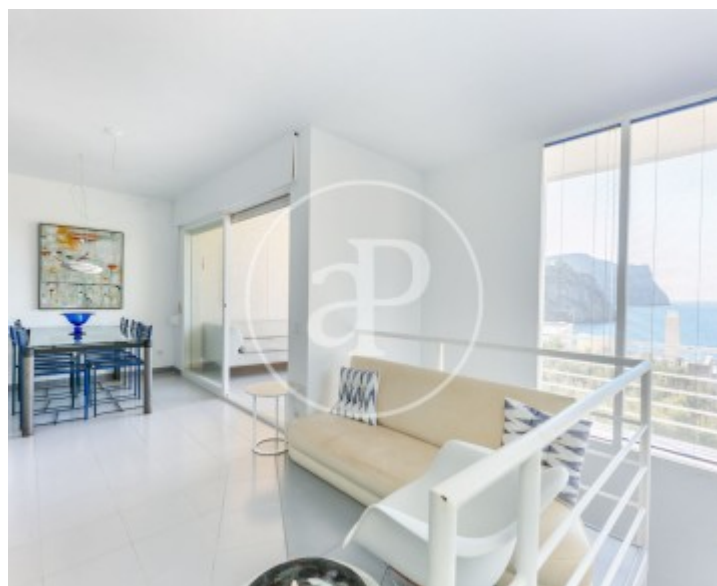
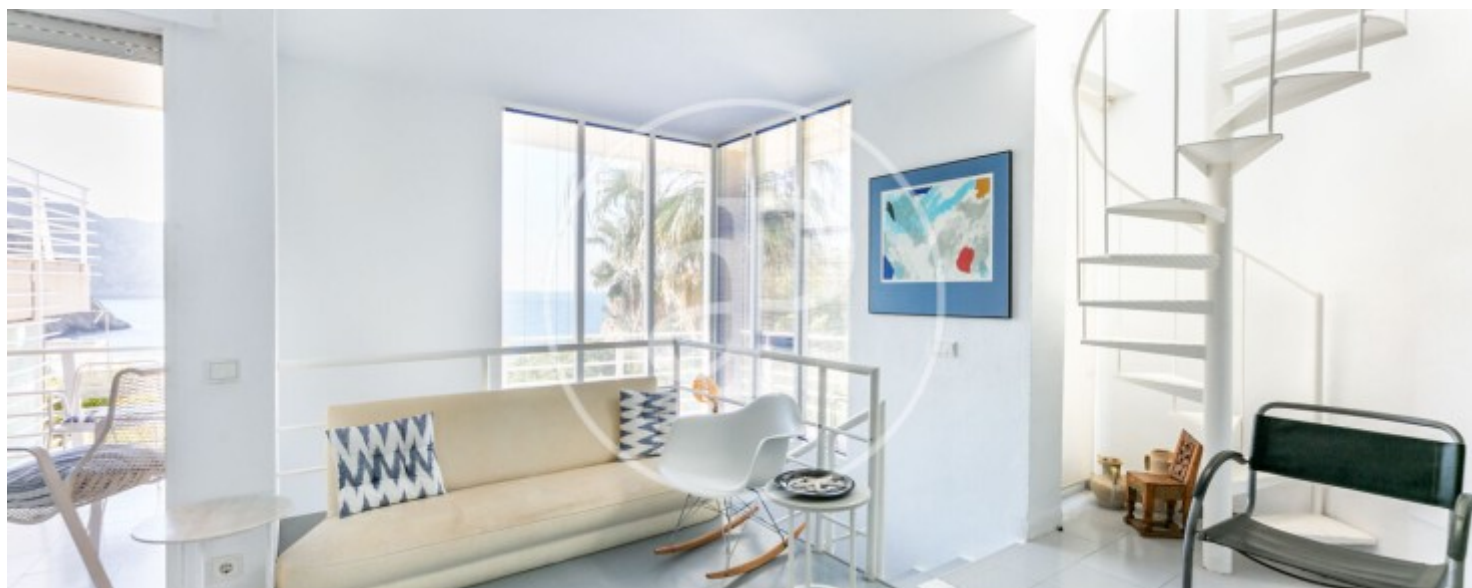
Port d'Andratx, Andratx

REF. APMS2309045



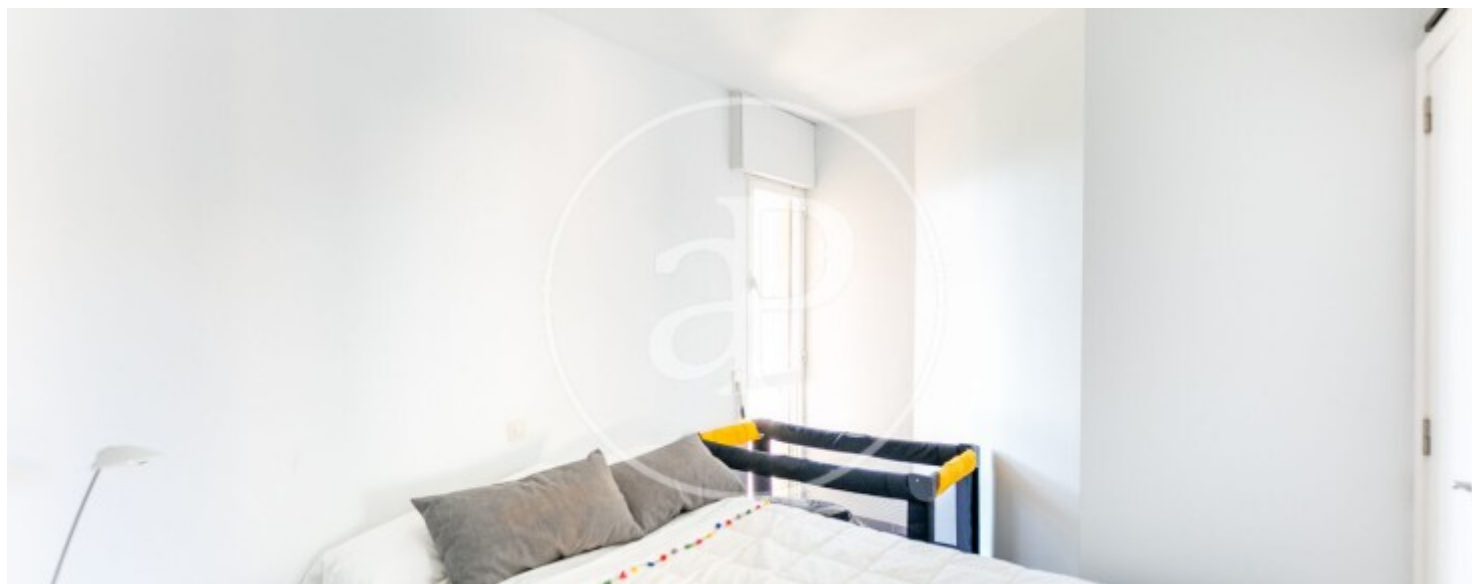
Port d'Andratx, Andratx

REF. APMS2309045



Port d'Andratx, Andratx

REF. APMS2309045



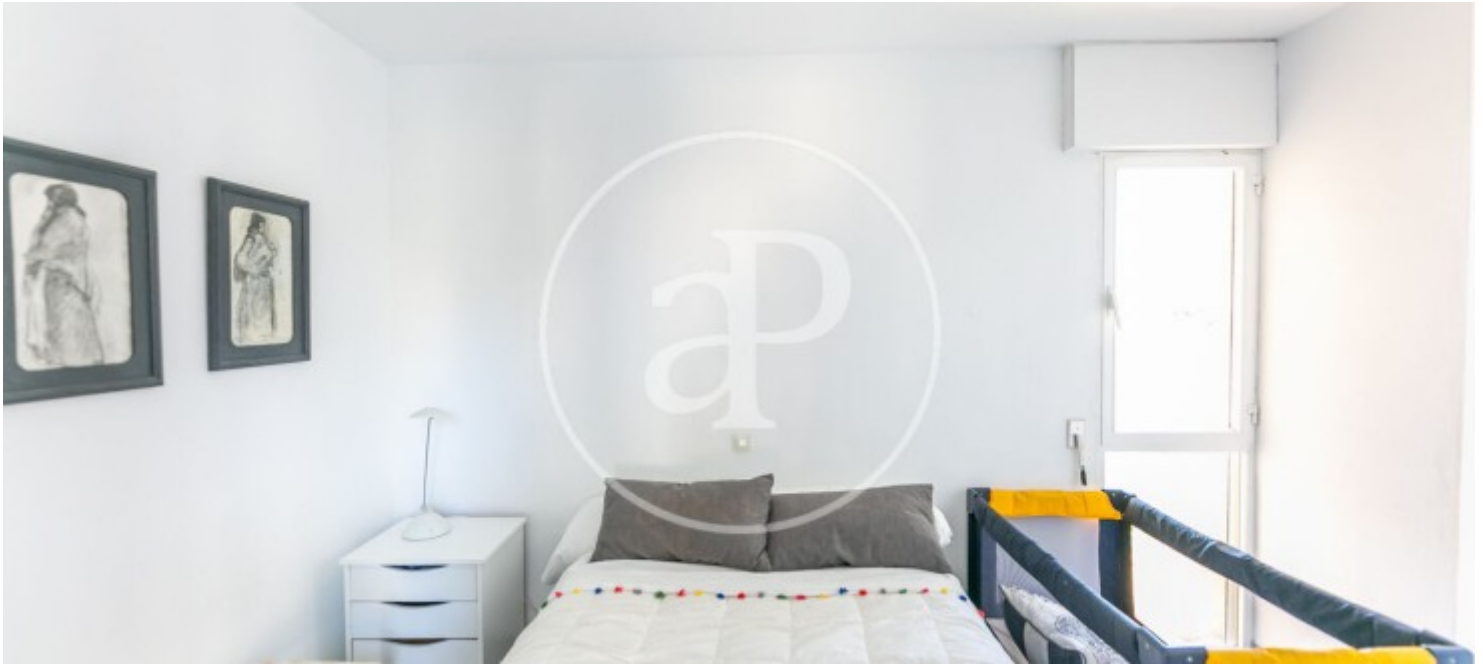


APROPERTIES
REAL ESTATE

Calle Unió 9
07001 Palma
T. 871 16 01 60
www.aproperties.es

Port d'Andratx, Andratx

REF. APMS2309045



The information about any property is not binding to any offer or contract. Any verbal or written declaration made by aProperties with regards to the value or condition of the property should not be considered accurate or factual. The pictures make reference to some parts of the property at the times that they were taken. The areas, dimensions and distances that are given are approximate and should be checked by the client. The images are computer generated and are just an approximate indication of the real appearance of the property; these may change at any time. The information with regards to the property may also change at any time.



For **more information** or
to make an appointment

apropertiespalma@aproperties.es
Tel: 871 16 01 60
www.aproperties.es