

Port d'Andratx, Andratx

REF. APM2405001

Apartment for rent in Puerto de Andratx

Features

- ✓ Furnished
- ✓ Terrace
- ✓ AACC
- ✓ Lift

Surface

90 m²

Bedrooms

2

Bathroom

1

Price

1,400 €



The beautiful apartment in Puerto de Andratx is located only one minute away from the beach.

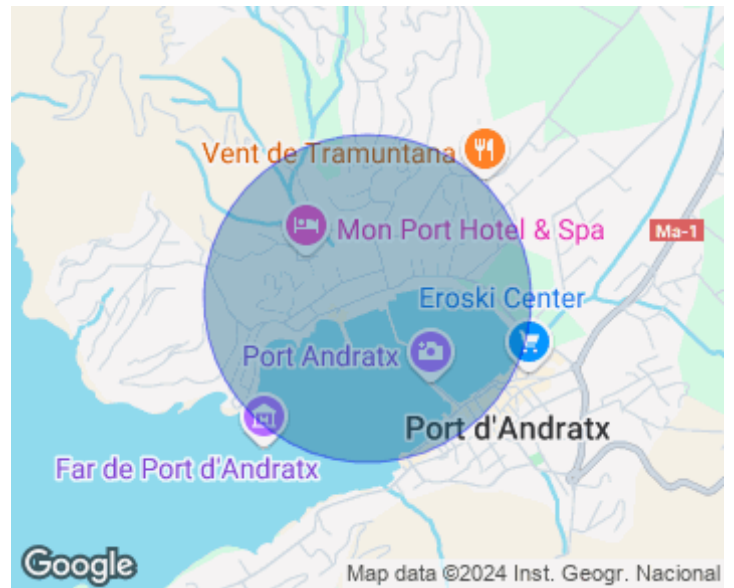
It has two bedrooms, one bathroom and a large terrace. From the moment you enter the flat, you will feel comfortable, which creates a sense of calm and tranquillity. The flat is located in a privileged location, just one minute away from the beach, making it the perfect place to live. Upon entering the flat, you are greeted by a bright and spacious open plan living space. There are two bedrooms that are decorated in soft, neutral tones, a bathroom that is well equipped with a bathtub, shower and vanity unit. It is also air-conditioned, ensuring you stay cool and comfortable

even on the hottest of days. The kitchen is fully equipped with everything you need to prepare delicious meals. The flat has a large terrace, which is the perfect place to relax and sunbathe. The terrace is furnished with comfortable outdoor seating. The flat is located close to a variety of amenities including shops, restaurants and bars. With a beautiful area, with plenty of natural beauty to explore, a variety of outdoor activities such as hiking, cycling and water sports, a picturesque location, with stunning views and plenty of photo opportunities, with easy access to public transport....

Contact us,
we will be happy to assist you,
to offer you more details and information.

Port d'Andratx, Andratx

REF. APM2405001



Port d'Andratx, Andratx

REF. APM2405001



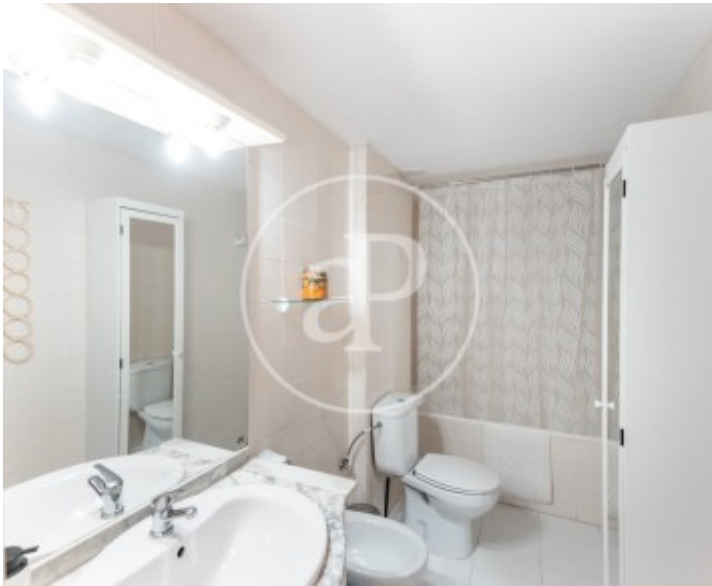
Port d'Andratx, Andratx

REF. APM2405001



Port d'Andratx, Andratx

REF. APM2405001



The information about any property is not binding to any offer or contract. Any verbal or written declaration made by aProperties with regards to the value or condition of the property should not be considered accurate or factual. The pictures make reference to some parts of the property at the times that they were taken. The areas, dimensions and distances that are given are approximate and should be checked by the client. The images are computer generated and are just an approximate indication of the real appearance of the property; these may change at any time. The information with regards to the property may also change at any time.

For **more information** or
to make an appointment

apropertiespalma@aproperties.es
Tel: 871 16 01 60
www.aproperties.es