

Port d'Andratx, Andratx

REF. VPM2511007

Duplex for sale in Puerto de Andratx

Features

- ✓ Views
- ✓ Terrace
- ✓ Furnished
- ✓ Backyard

Surface

150 m²

Bedrooms

4

Bathrooms

3

Price

1,575,000 €



This elegant duplex penthouse offers 150 m² of living space and an 80 m² solarium terrace with breathtaking panoramic sea views.

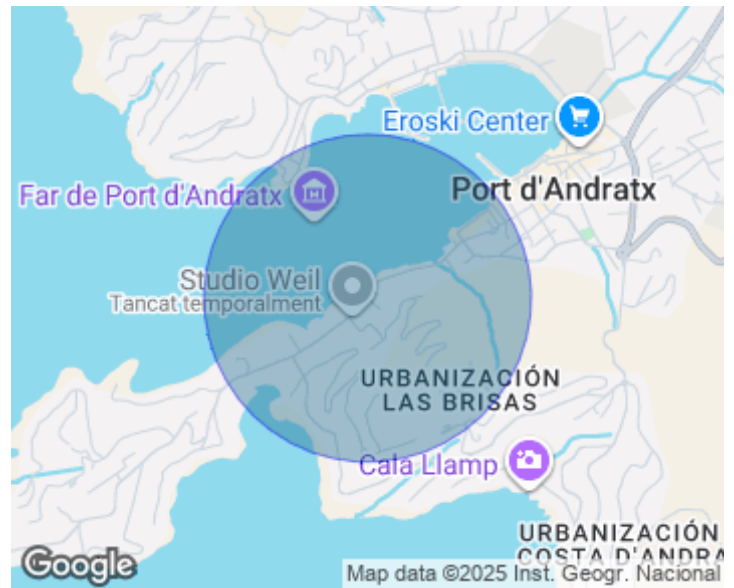
From the main entrance, you access a spacious and bright living-dining room, bathed in natural light streaming through its large windows, with direct access to a terrace boasting spectacular views. The independent kitchen is fully equipped and includes a laundry area. On this same floor, there is a single bedroom and a bathroom with a shower. A spiral staircase leads up to the magnificent 80 m² solarium terrace, equipped with an outdoor kitchen — perfect for enjoying the Mediterranean climate and the unparalleled sea

views. The sleeping area, located on the lower floor, features three large double bedrooms, one of them with an en-suite bathroom and built-in wardrobes. The other two bedrooms share a full bathroom with a bathtub. The property features white ceramic floors, an outdoor parking space, and a storage room. Although in good condition, it offers an excellent renovation opportunity to tailor it to the new owner's taste and style. Located in the exclusive and peaceful residential area of Cala Marmassen, surrounded by greenery and with easy access to a charming cove, this property is just a...

Contact us,
we will be happy to assist you,
to offer you more details and information.

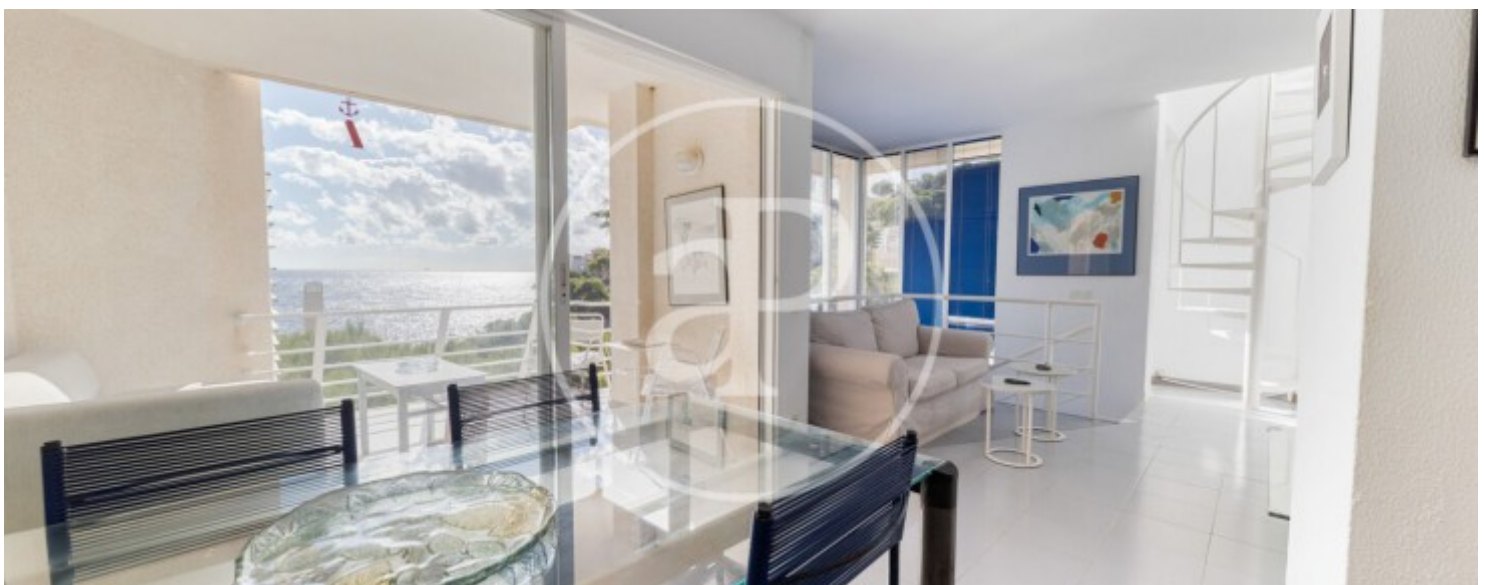
Port d'Andratx, Andratx

REF. VPM2511007



Port d'Andratx, Andratx

REF. VPM2511007



Port d'Andratx, Andratx

REF. VPM2511007



Port d'Andratx, Andratx

REF. VPM2511007



The information about any property is not binding to any offer or contract. Any verbal or written declaration made by aProperties with regards to the value or condition of the property should not be considered accurate or factual. The pictures make reference to some parts of the property at the times that they were taken. The areas, dimensions and distances that are given are approximate and should be checked by the client. The images are computer generated and are just an approximate indication of the real appearance of the property; these may change at any time. The information with regards to the property may also change at any time.

For **more information** or
to make an appointment

apropertiespalma@aproperties.es
Tel: 871 16 01 60
www.aproperties.es