



Santo Domingo, Algete

REF. VMN2410006

House for sale in calle Luna

Features

- ✓ Views
- ✓ Boxroom
- ✓ Terrace
- ✓ Pool
- ✓ Heating
- ✓ AACC
- ✓ Backyard
- ✓ Has parking

Price

1,200,000 €

Surface
337 m²

Plot surface
1,822 m²

Bedrooms
5

Bathrooms
4



aProperties Real State presents this solidly built house with magnificent views, beautiful garden with swimming pool and solarium and different environments.

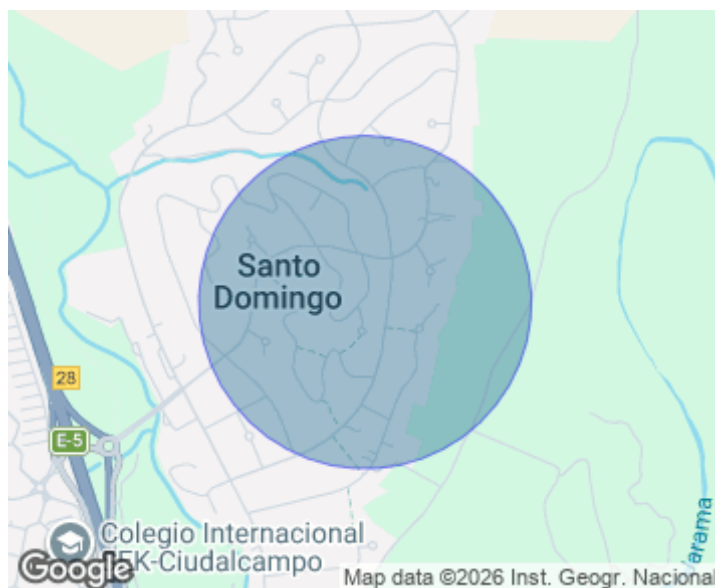
The house has about 337 m² built on a plot of 1822 m². It has 5 bedrooms, 3 bathrooms and a toilet. The main floor of the house has a spacious hall, living room with direct access to the kitchen and the garden, two bedrooms, an office and a large living room with large and bright windows and a large fireplace. On the first floor, two spacious bedrooms, one of them with fireplace, terrace with views and a complete bathroom. A staircase leads to a lower floor where there is a spectacular wine cellar, a spa area with j

acuzzi, a games room and a garage for two cars. In the garden there is a variety of trees, flowers and plants cared for with the utmost care of the owner. Santo Domingo is a pleasant residential area, located at Km. 28 of the A1 motorway. It has 24 hour private security and perimeter video surveillance. It is communicated with Madrid by bus with regular departures from Plaza Castilla and metro network (Hospital Infanta Sofía) 10 minutes away. The development has a shopping centre with 42 establishments that cover everyday needs, social club and children's playground, sports centre and s...

Contact us,
we will be happy to assist you,
to offer you more details and information.

Santo Domingo, Algete

REF. VMN2410006



Santo Domingo, Algete

REF. VMN2410006



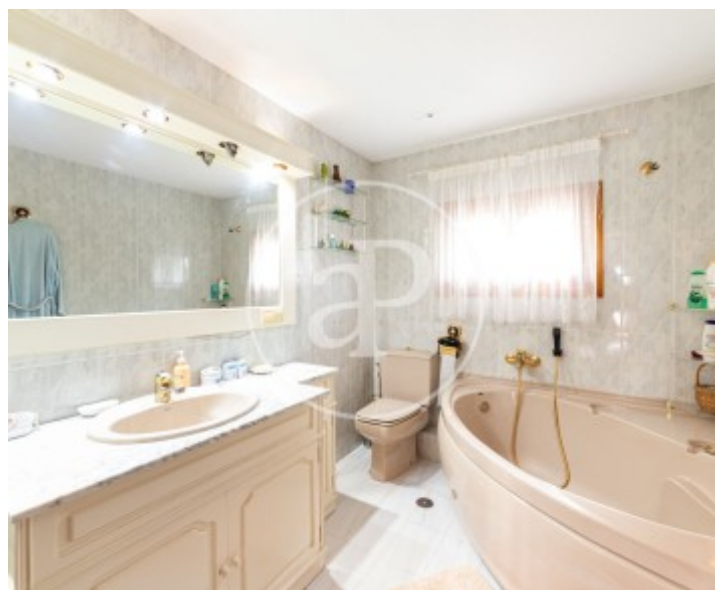
Santo Domingo, Algete

REF. VMN2410006



Santo Domingo, Algete

REF. VMN2410006



The information about any property is not binding to any offer or contract. Any verbal or written declaration made by aProperties with regards to the value or condition of the property should not be considered accurate or factual. The pictures make reference to some parts of the property at the times that they were taken. The areas, dimensions and distances that are given are approximate and should be checked by the client. The images are computer generated and are just an approximate indication of the real appearance of the property; these may change at any time. The information with regards to the property may also change at any time.

For **more information** or
to make an appointment

apropertiesmadrid@aproperties.es
Tel: 91 800 54 65
www.aproperties.es