

Algaida Pueblo, Algaida

REF. VPM2312019



## Rustic land for sale in the municipality of Algaida

### Features

Surface  
**16,775 m<sup>2</sup>**

Price

**320,000 €**



**If you are looking for a paradisiacal place on the beautiful island of Mallorca, we present a plot of land for sale of 16.**

770 m<sup>2</sup> strategically located in the best area of the municipality of Algaida. Impressive panoramic views of the valley and the majestic Tramontana Mountains, declared a World Heritage Site by UNESCO. Outstanding characteristics: Surface area: 16,770 sqm. with very good planimetry and easy access. Approved building project: This land has an approved building project for a single-family house of 317 m<sup>2</sup> + swimming pool and garage, which adds significant value to your investment. Available Services: The land already has a well,

electricity supply can be connected 150 mts away. Unique Natural Environment: Enjoy the serenity and beauty of a unique natural environment, with typical Mediterranean vegetation. This privileged location is only a few minutes away from the charming village of Algaida, a landmark in the central region of Mallorca. Don't miss this unique opportunity to invest in a plot that offers so much potential and beauty in Mallorca, contact us today for more details and to plan a viewing! Can you imagine living here?

**Contact us,**  
we will be happy to assist you,  
to offer you more details and information.



Algaida Pueblo, Algaida

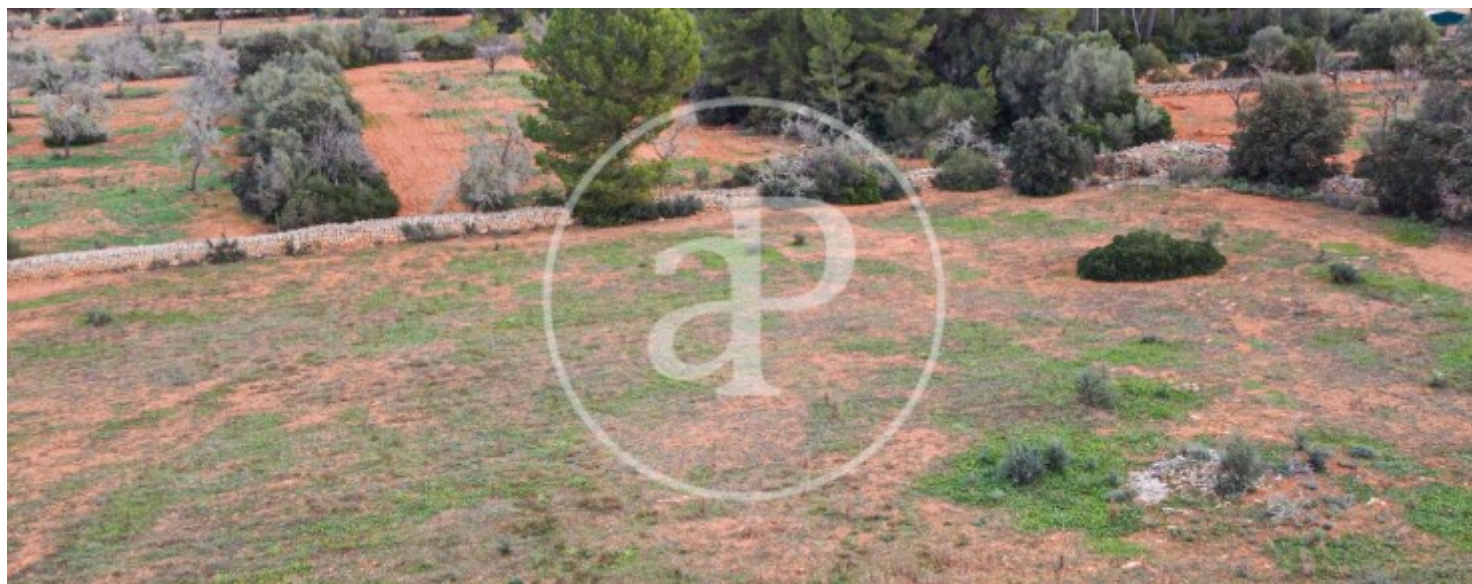
REF. VPM2312019





Algaida Pueblo, Algaida

REF. VPM2312019







APROPERTIES  
REAL ESTATE

Calle Unió 9  
07001 Palma  
T. 871 16 01 60  
[www.aproproperties.es](http://www.aproproperties.es)

Algaida Pueblo, Algaida

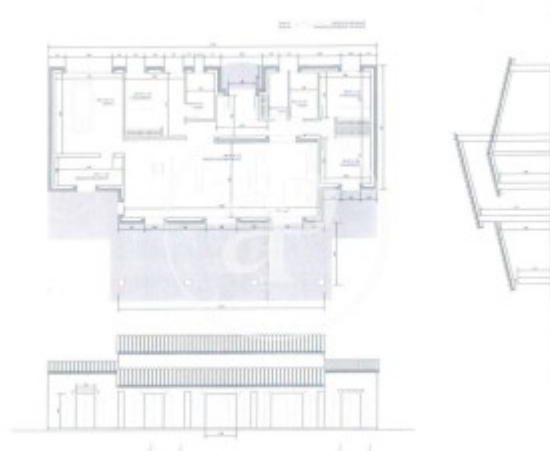
REF. VPM2312019





Algaida Pueblo, Algaida

REF. VPM2312019



The information about any property is not binding to any offer or contract. Any verbal or written declaration made by aProperties with regards to the value or condition of the property should not be considered accurate or factual. The pictures make reference to some parts of the property at the times that they were taken. The areas, dimensions and distances that are given are approximate and should be checked by the client. The images are computer generated and are just an approximate indication of the real appearance of the property; these may change at any time. The information with regards to the property may also change at any time.



For **more information** or  
to make an appointment

[apropertiespalma@aproperties.es](mailto:apropertiespalma@aproperties.es)  
Tel: 871 16 01 60  
[www.aproperties.es](http://www.aproperties.es)