

Port d'Alcúdia - Platja d'Alcúdia, Alcúdia

REF. APMS2509003

Flat for rent with Terrace in Port d'Alcúdia - Platja d'Alcúdia (Alcúdia)

Features

- ✓ Views
- ✓ AACC
- ✓ Has parking
- ✓ Furnished
- ✓ Terrace

Surface

140 m²

Bedrooms

3

Bathrooms

2

Price

2,000 €



Located in the north of Mallorca, in the exclusive Aucanada area, this 140 m² apartment combines space, natural light, and spectacular sea views.

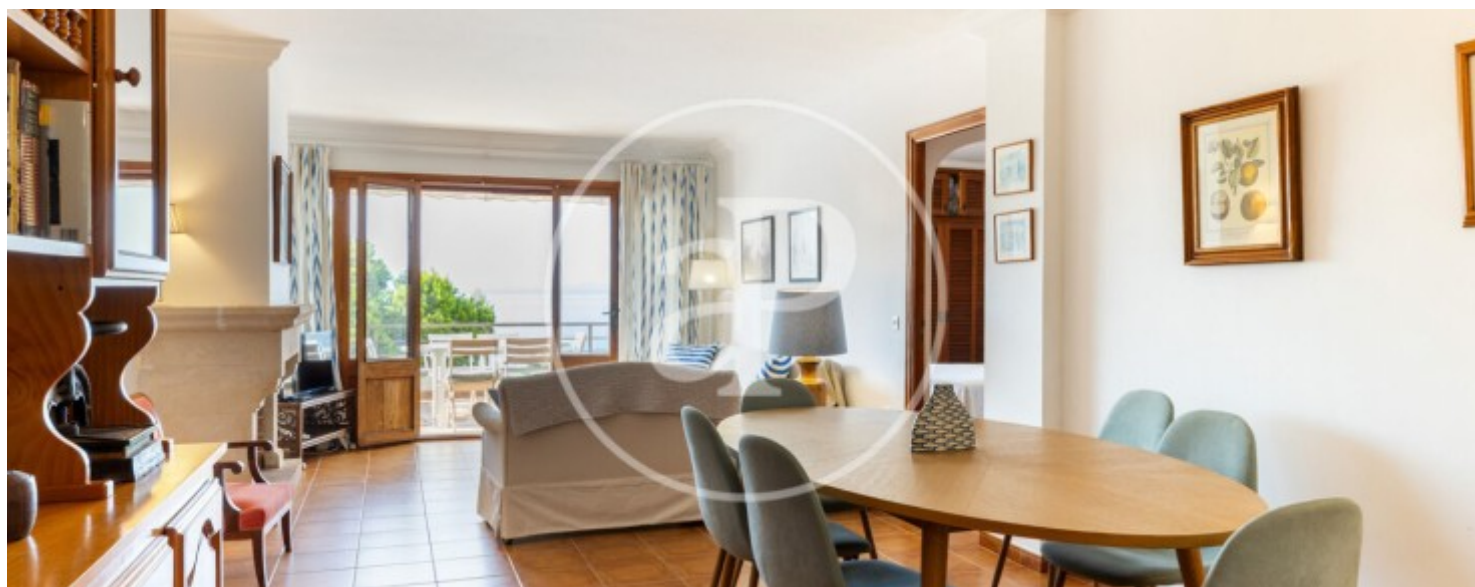
The property features a cozy and bright living-dining room, equipped with a fireplace, sofa area, direct access to a pleasant terrace, and large windows that connect with the outdoors. Mediterranean décor with wood and wicker details adds warmth and style. The private terrace offers panoramic sea views, a chill-out area, an awning, and plants – ideal for enjoying the open air at any time of day. The separate kitchen, with a convenient pantry for storage, is fully furnished and equipped and has access to a

laundry area. There are three double bedrooms, one with direct access to the terrace, all with built-in wardrobes. Two full bathrooms with bathtubs are available, one of them en suite. The property comes with air conditioning in the living room, double-glazed windows, terrazzo floors, and is fully furnished and equipped. It also includes an outdoor parking space right at the entrance. Perfect for those seeking peace and quiet in one of the most beautiful areas in the north of Mallorca. Community fees and property tax (IBI) are included in the rental price. Pets upon request. Can you...

Contact us,
we will be happy to assist you,
to offer you more details and information.

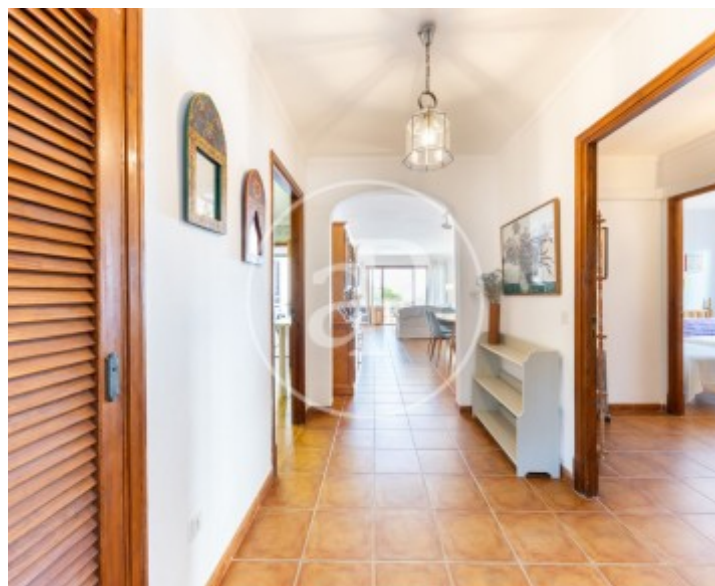
Port d'Alcúdia - Platja d'Alcúdia, Alcúdia

REF. APMS2509003



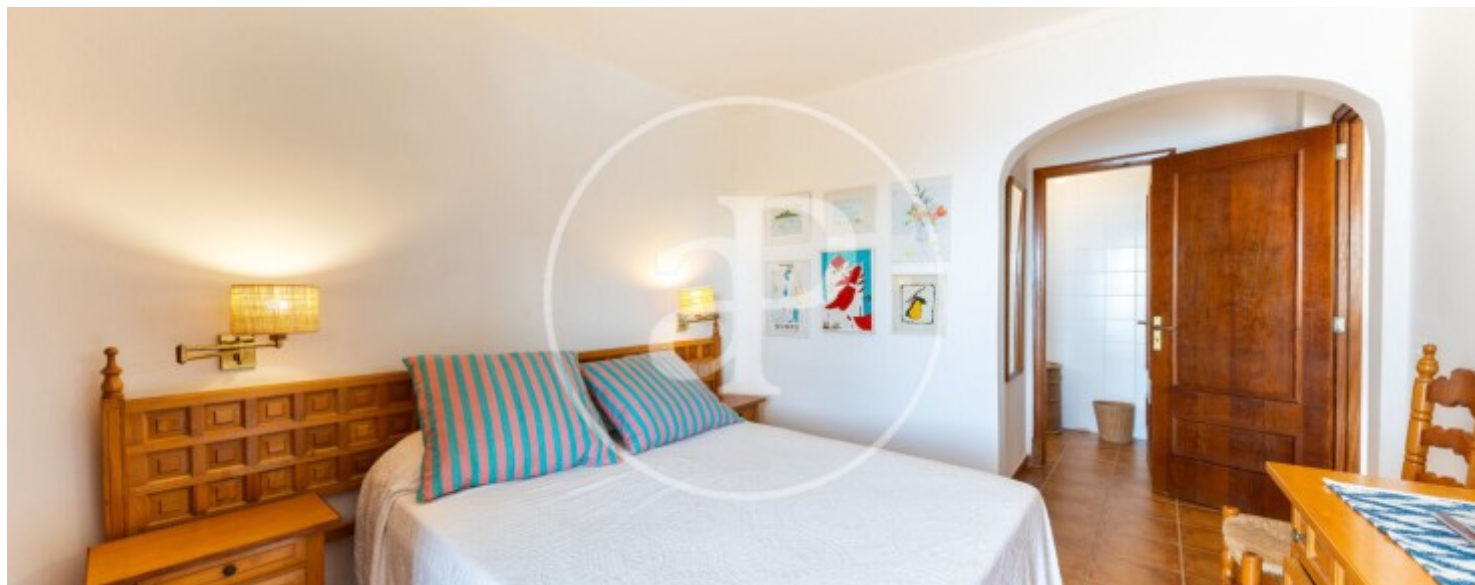
Port d'Alcúdia - Platja d'Alcúdia, Alcúdia

REF. APMS2509003



Port d'Alcúdia - Platja d'Alcúdia, Alcúdia

REF. APMS2509003



Port d'Alcúdia - Platja d'Alcúdia, Alcúdia

REF. APMS2509003



The information about any property is not binding to any offer or contract. Any verbal or written declaration made by aProperties with regards to the value or condition of the property should not be considered accurate or factual. The pictures make reference to some parts of the property at the times that they were taken. The areas, dimensions and distances that are given are approximate and should be checked by the client. The images are computer generated and are just an approximate indication of the real appearance of the property; these may change at any time. The information with regards to the property may also change at any time.

For **more information** or
to make an appointment

apropertiespalma@aproperties.es
Tel: 871 16 01 60
www.aproperties.es