



Port Saplaya, Alboraya

REF. VV2510074

# Spectacular flat for sale with Terrace in Port Saplaya (Alboraya)

## Features

- ✓ Views
- ✓ Heating
- ✓ AACC
- ✓ Terrace

Surface

**93 m<sup>2</sup>**

Bedrooms

**3**

Bathrooms

**2**

Price

**339,000 €**



**This charming apartment is located in Portsaplaya, an exclusive coastal area known as the “Little Venice” for its picturesque canals and maritime atmosphere.**

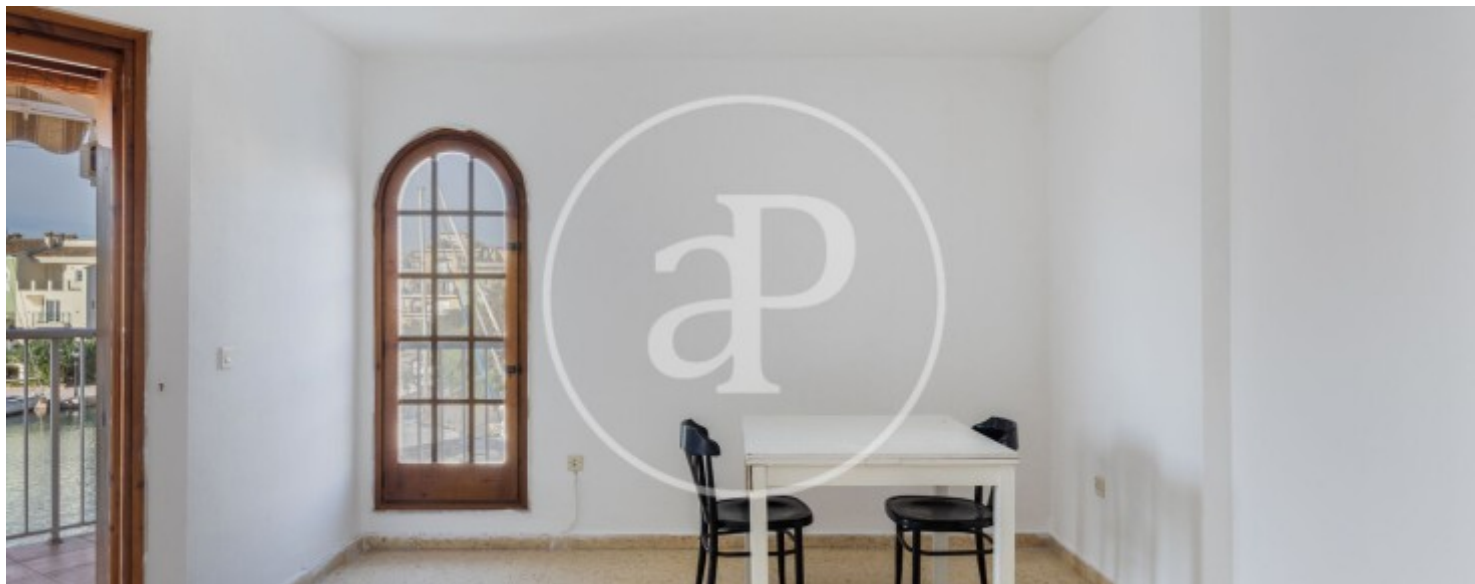
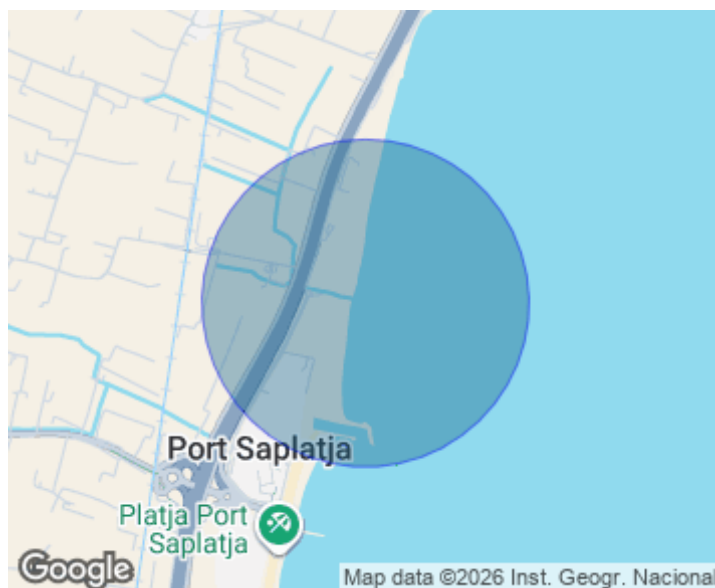
Just ten minutes from the center of Valencia, it offers the perfect combination of seaside tranquility and the convenience of city living. Set in a very quiet and secure residential complex, the building provides all the necessary amenities for comfortable year-round living, with direct access to the promenade lined with restaurants, cafés, and shops just steps away. The apartment features three spacious bedrooms and two full bathrooms, designed to offer brightness and comfort. The

living-dining room opens onto a terrace with stunning views of the marina and the Mediterranean Sea, creating an ideal space to relax or enjoy outdoor dining. The fully equipped kitchen combines functionality and style and includes a separate laundry area. The bedrooms have built-in wardrobes and large windows that let in plenty of natural light. The master bedroom has an en-suite bathroom and direct access to the terrace. With a thoughtful layout and quality finishes, this apartment is perfect both as a main residence and as a holiday home by the sea. The surroundings offer a relaxed...

**Contact us,**  
we will be happy to assist you,  
to offer you more details and information.

**Port Saplaya, Alboraya**

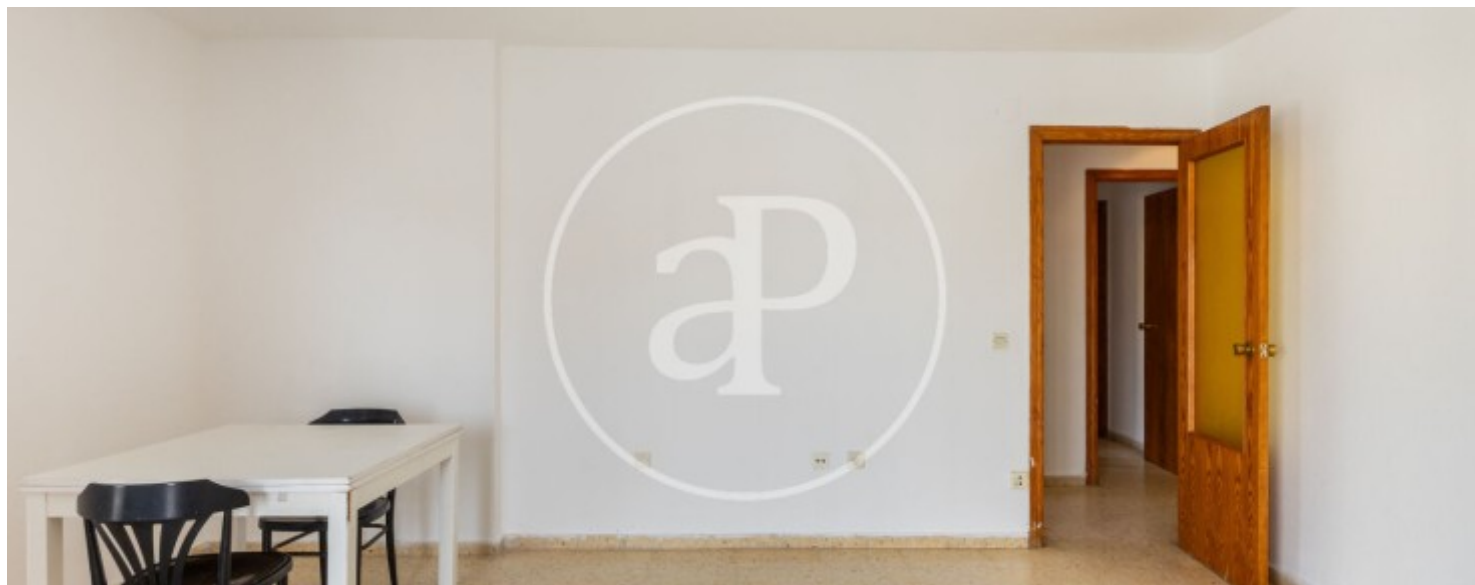
**REF. VV2510074**





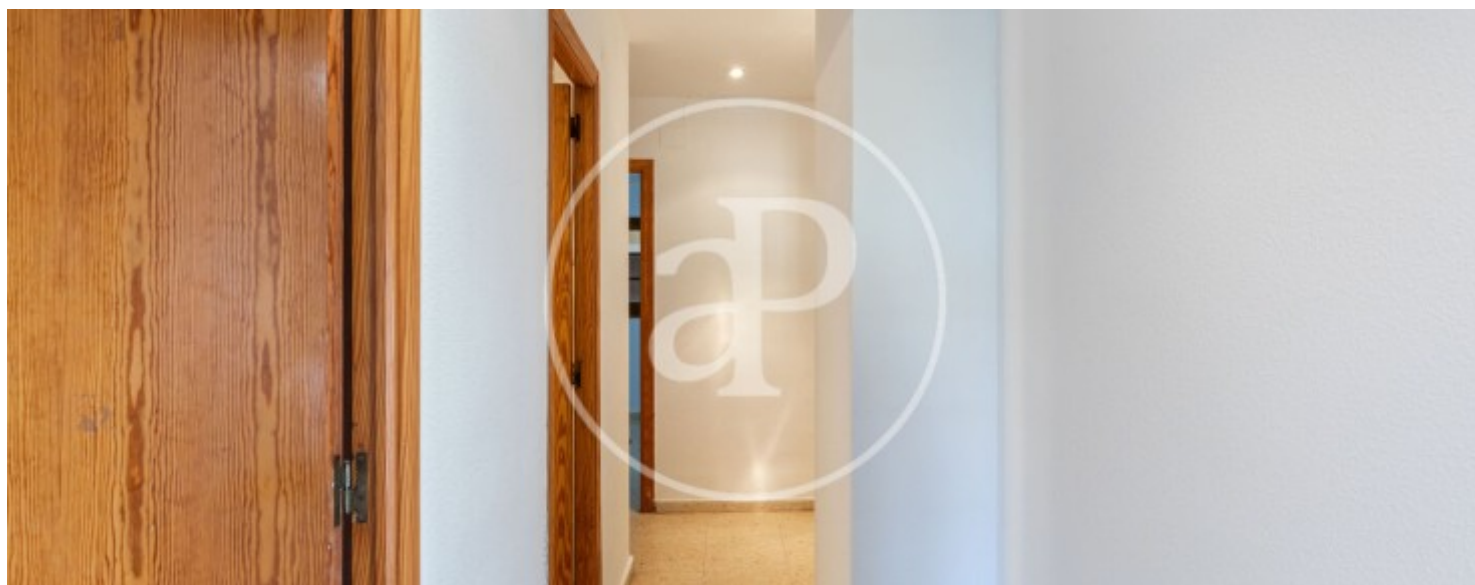
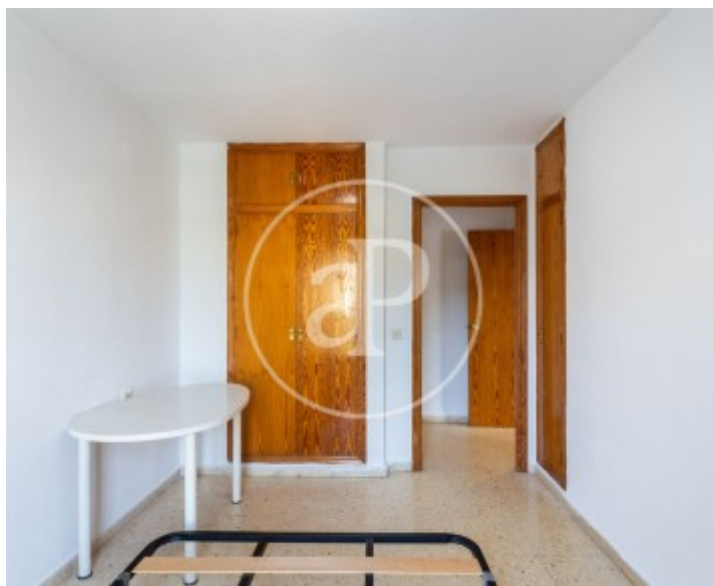
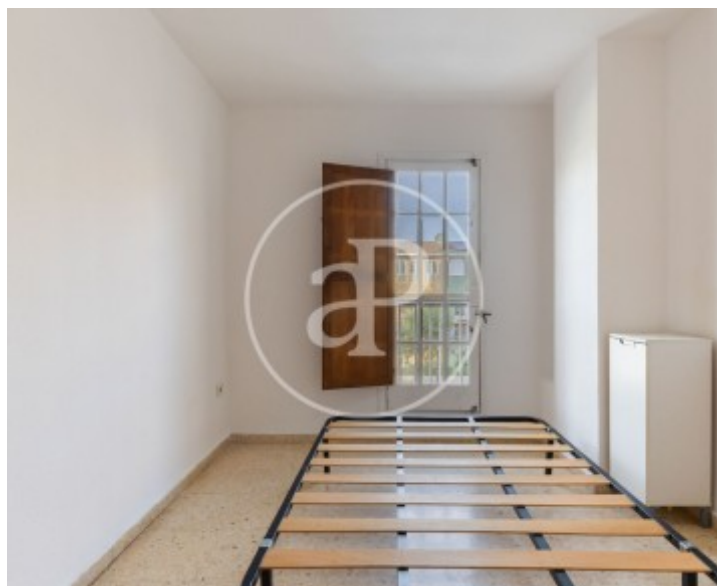
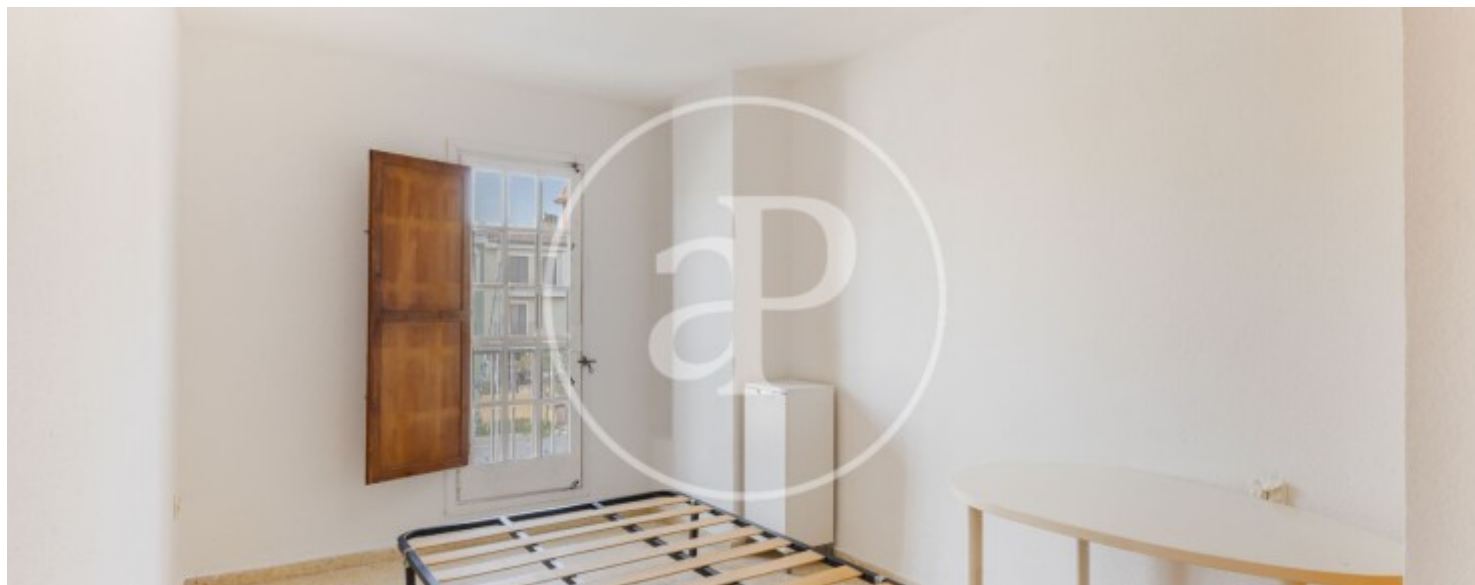
Port Saplaya, Alboraya

REF. VV2510074



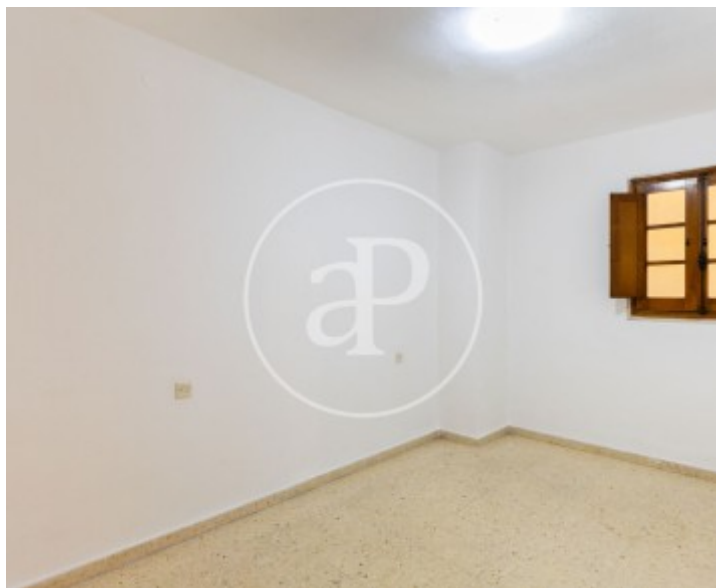
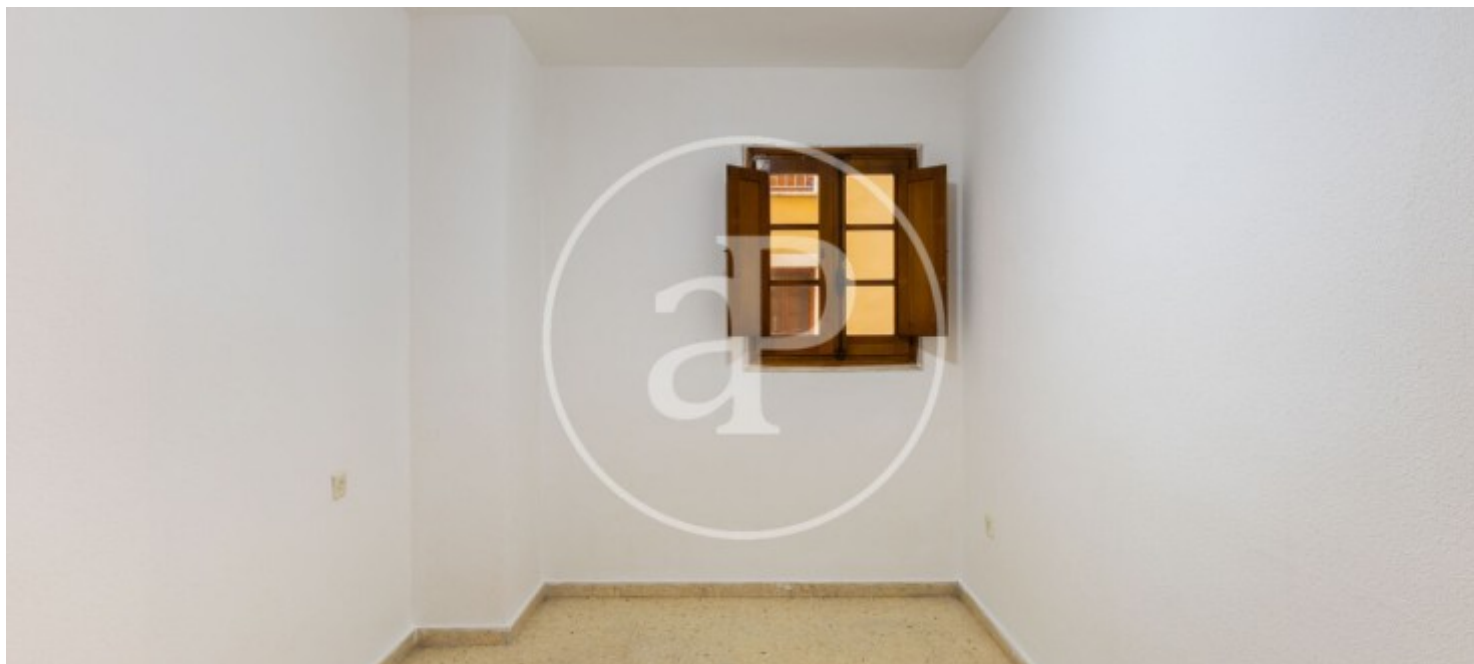
Port Saplaya, Alboraya

REF. VV2510074



Port Saplaya, Alboraya

REF. VV2510074



The information about any property is not binding to any offer or contract. Any verbal or written declaration made by aProperties with regards to the value or condition of the property should not be considered accurate or factual. The pictures make reference to some parts of the property at the times that they were taken. The areas, dimensions and distances that are given are approximate and should be checked by the client. The images are computer generated and are just an approximate indication of the real appearance of the property; these may change at any time. The information with regards to the property may also change at any time.

For **more information** or  
to make an appointment

[apropertiesvalencia@aproperties.es](mailto:apropertiesvalencia@aproperties.es)  
Tel: 96 128 59 65  
[www.aproperties.es](http://www.aproperties.es)