

Port Saplaya, Alboraya

REF. AV2505044

Flat for rent with views in Port Saplaya (Alboraya)

Features

- ✓ Views
- ✓ AACC
- ✓ Lift
- ✓ Furnished
- ✓ Pool
- ✓ Has parking

Price
1,300 €

Surface

65 m²

Bedrooms

2

Bathroom

1



aProperties presents this fully equipped apartment that offers everything you need for a comfortable stay.

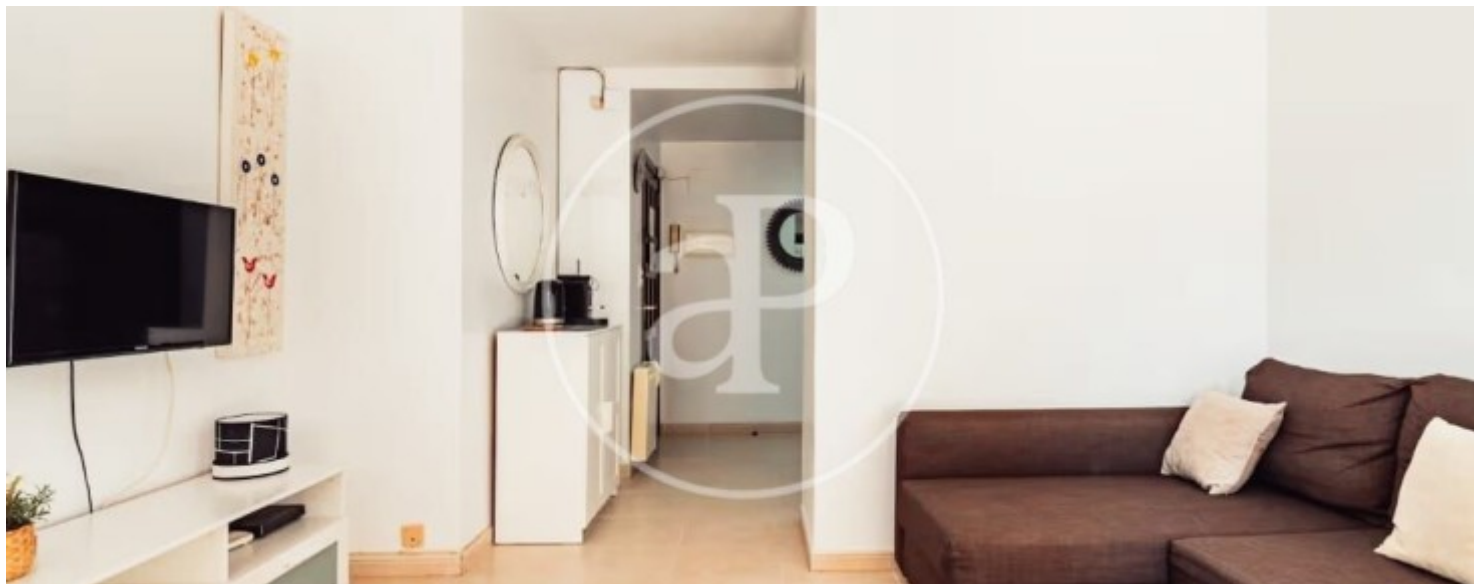
It is exterior-facing, very bright, and located in the main square of the residential complex — a privileged spot from where you can enjoy views of the docks. The apartment features 2 bedrooms and a full bathroom. The master bedroom includes a double bed and built-in wardrobes for added comfort. The second bedroom is designed for children, with a practical bunk bed. The bathroom is fitted with a modern shower. The spacious living room is filled with natural light and offers beautiful views of the main square. From here, you can access a large balcony

— perfect for relaxing or enjoying the fresh air. As an added bonus, the building includes private parking. Located in a quiet and charming area known as the Venice of Valencia, the surroundings are filled with canals and pleasant walkways. From here, you can easily reach Malvarrosa Beach by walking along the shoreline, or use the bike lane that connects the residential complex directly with the Port of Valencia. If you would like more information or to schedule a visit, don't hesitate to contact us. We'll be happy to assist you.

Contact us,
we will be happy to assist you,
to offer you more details and information.

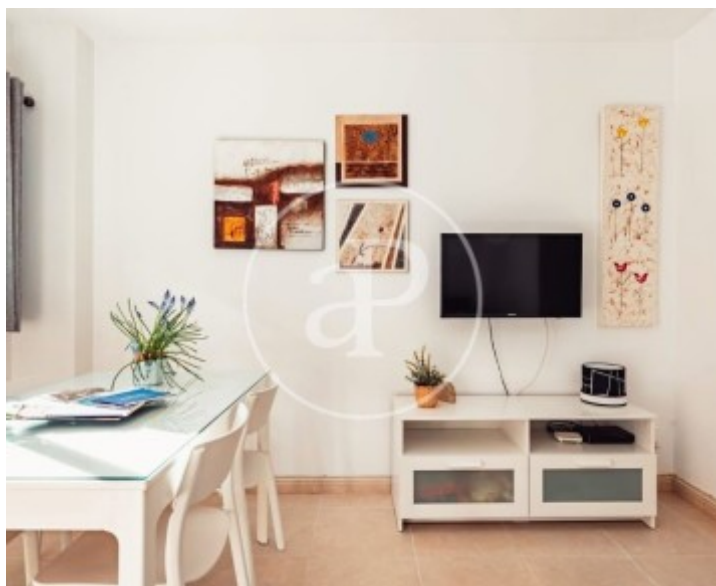
Port Saplaya, Alboraya

REF. AV2505044



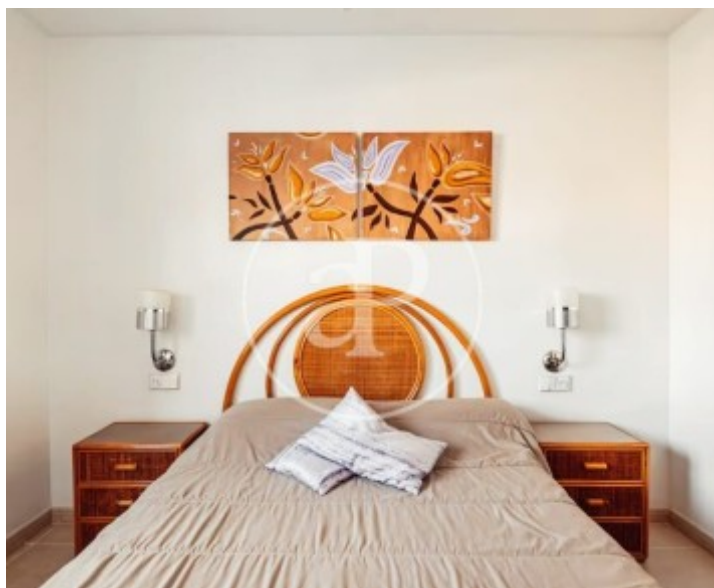
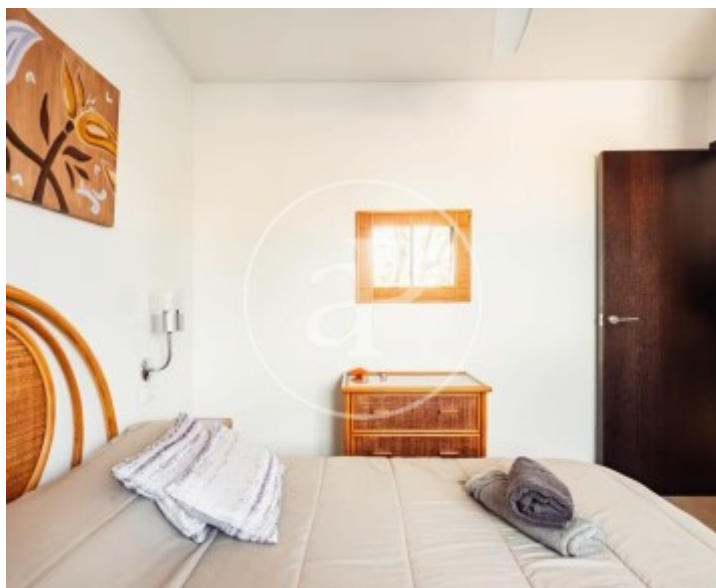
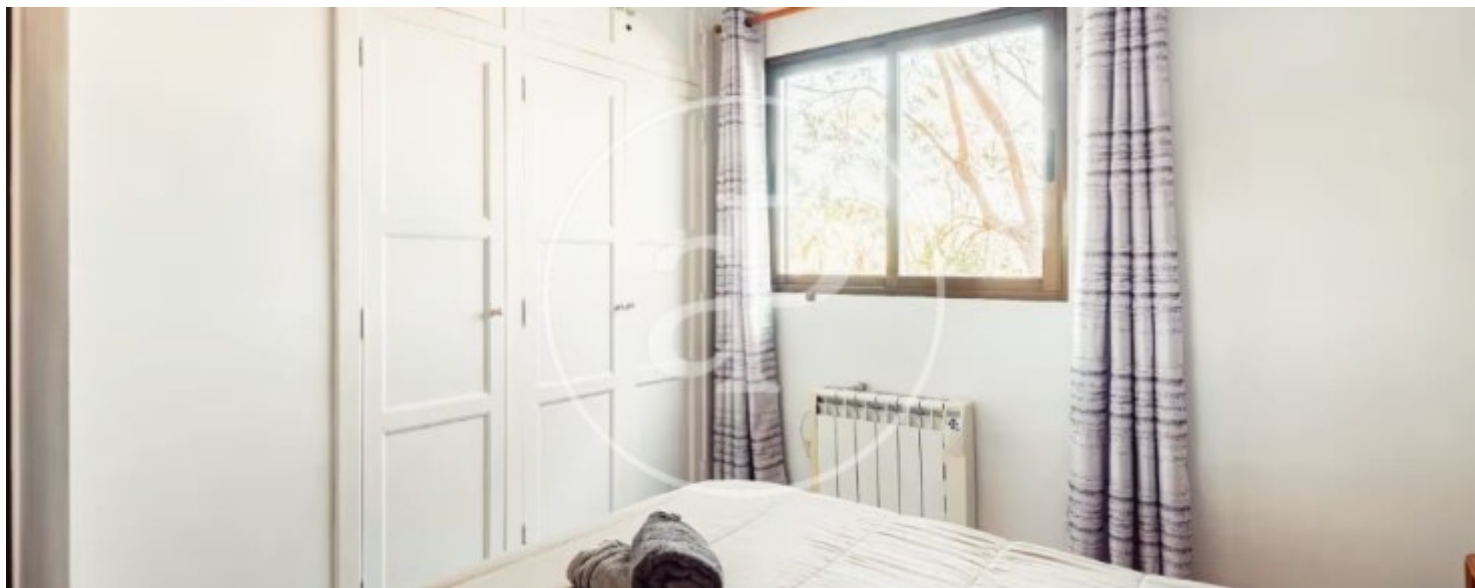
Port Saplaya, Alboraya

REF. AV2505044



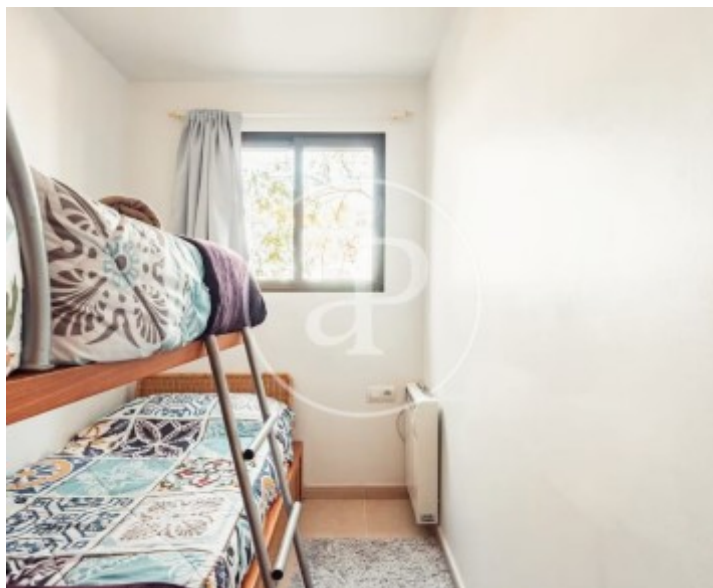
Port Saplaya, Alboraya

REF. AV2505044



Port Saplaya, Alboraya

REF. AV2505044



The information about any property is not binding to any offer or contract. Any verbal or written declaration made by aProperties with regards to the value or condition of the property should not be considered accurate or factual. The pictures make reference to some parts of the property at the times that they were taken. The areas, dimensions and distances that are given are approximate and should be checked by the client. The images are computer generated and are just an approximate indication of the real appearance of the property; these may change at any time. The information with regards to the property may also change at any time.

For **more information** or
to make an appointment

apropertiesvalencia@aproperties.es
Tel: 96 128 59 65
www.aproperties.es