



Port Saplaya, Alboraya

REF. VV2511043

Flat for sale with views in Port Saplaya (Alboraya)

Features

- ✓ Views
- ✓ Heating
- ✓ AACC
- ✓ Lift

Surface

60 m²

Bedroom

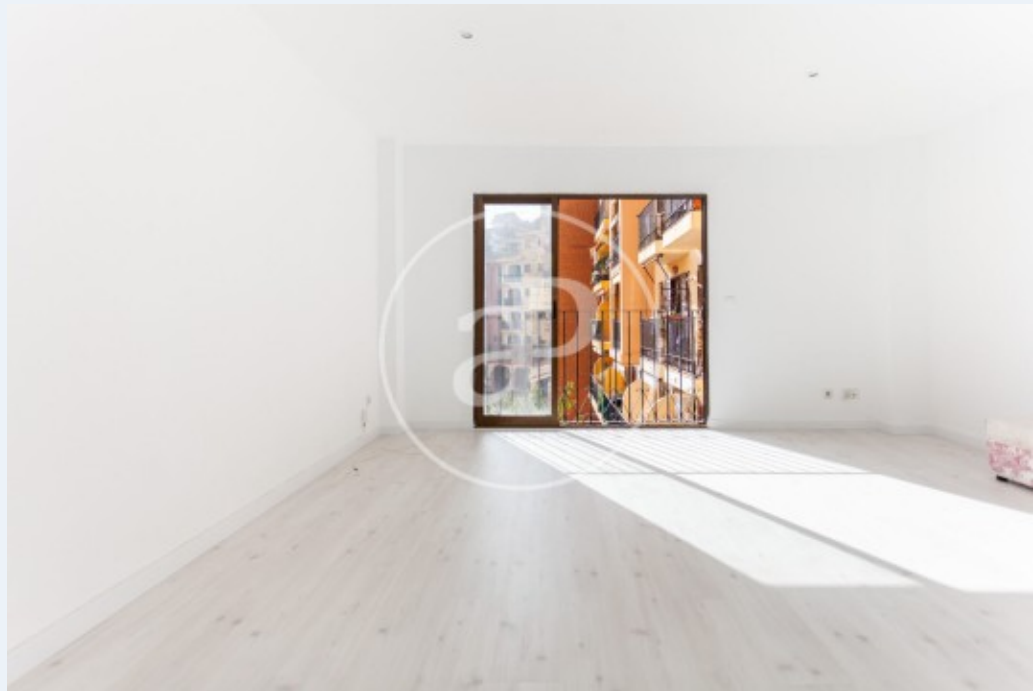
1

Bathroom

1

Price

220,000 €



aProperties presents this exquisite home located in the heart of Port Saplaya, known as the Little Venice of Valencia, a unique setting where Mediterranean charm blends with the serenity of its canals.

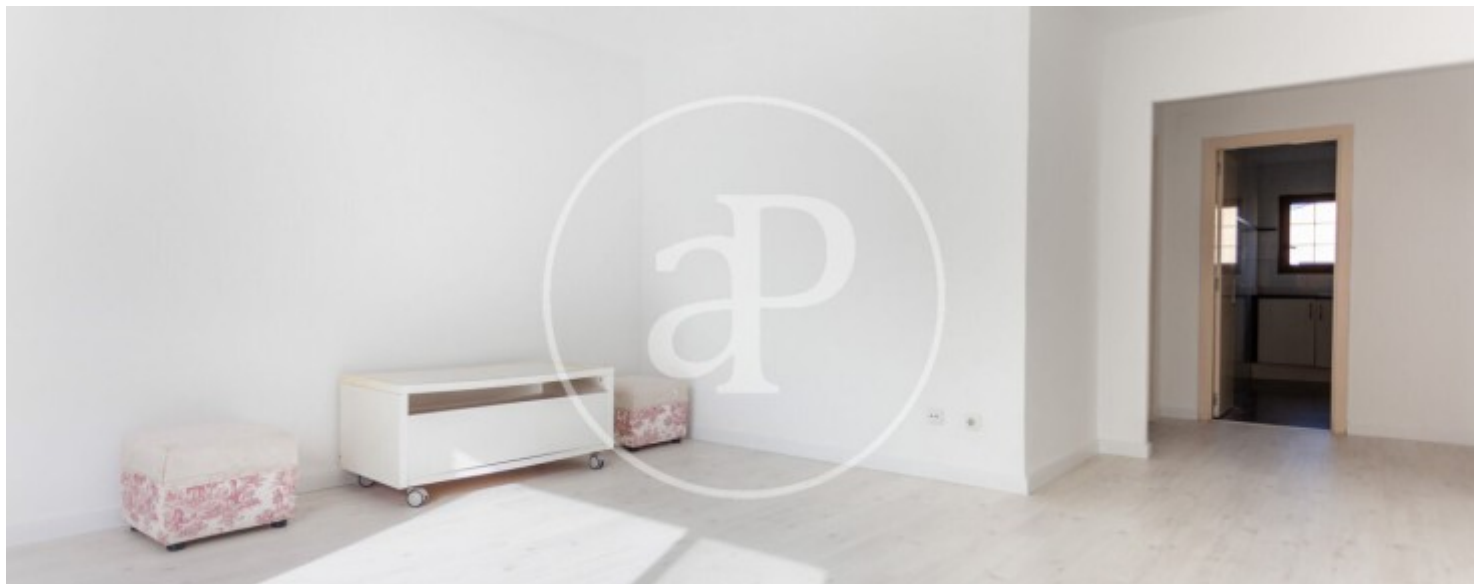
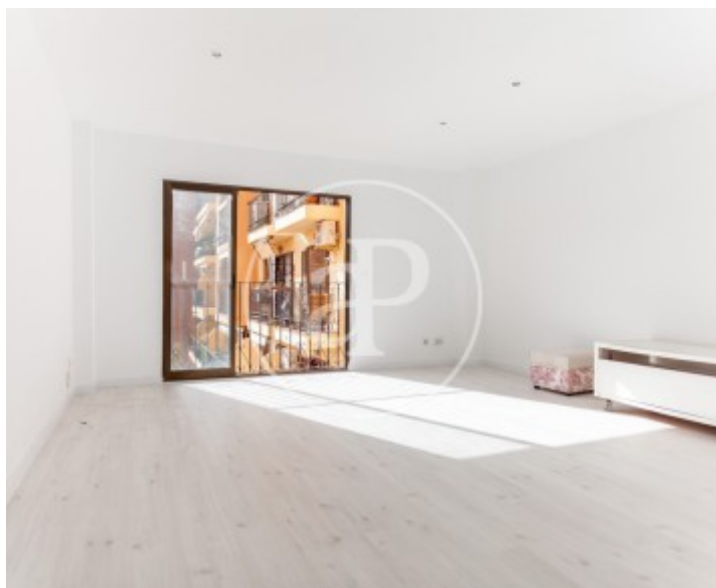
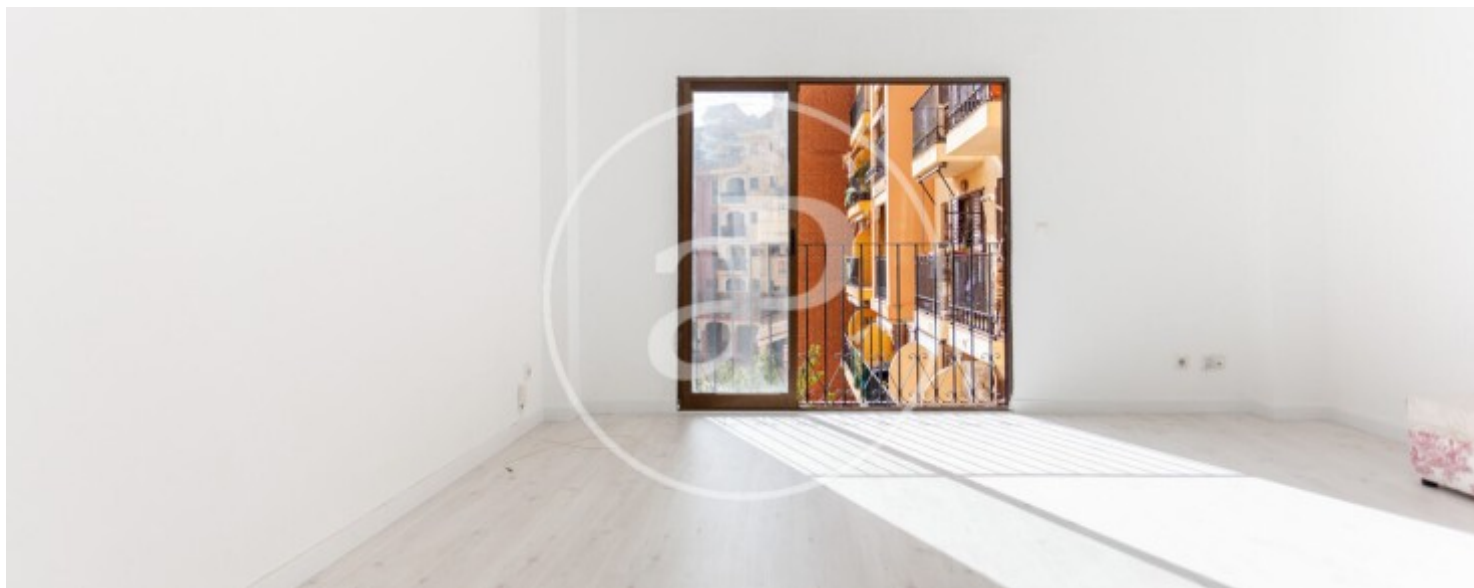
The property, featuring one bedroom and one bathroom, has been designed for those seeking a refuge of light, peace and beauty. The living room opens onto a balcony offering captivating views of the marina and the canal, an idyllic setting that invites daily relaxation and enjoyment. Thanks to its layout and orientation, the home boasts exceptional brightness that enhances every corner. The newly installed parquet flooring adds warmth and distinction, while the

air-conditioning split unit ensures maximum comfort throughout the year. Situated in the Plaza Mayor, the home enjoys a unique atmosphere, balancing seaside tranquility with the vibrancy of a privileged environment. Just minutes from Valencia and surrounded by all services —shops, restaurants and a shopping centre— it offers excellent convenience and connectivity. The kitchen is equipped with appliances, allowing for immediate living in this special setting. In addition, the property offers an optional parking space, a valuable asset in the area. Do not hesitate to contact us or...

Contact us,
we will be happy to assist you,
to offer you more details and information.

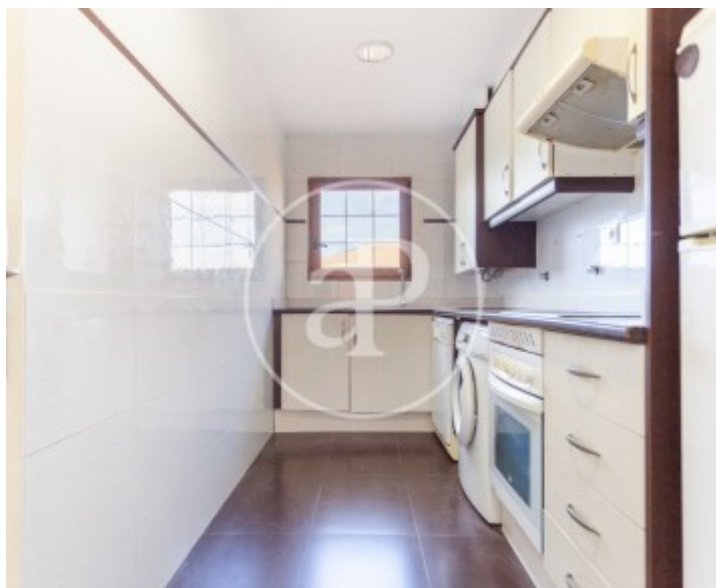
Port Saplaya, Alboraya

REF. VV2511043



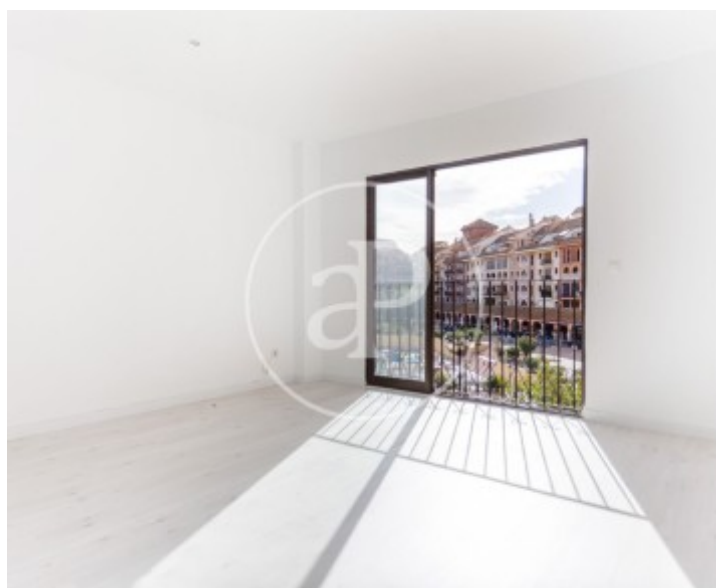
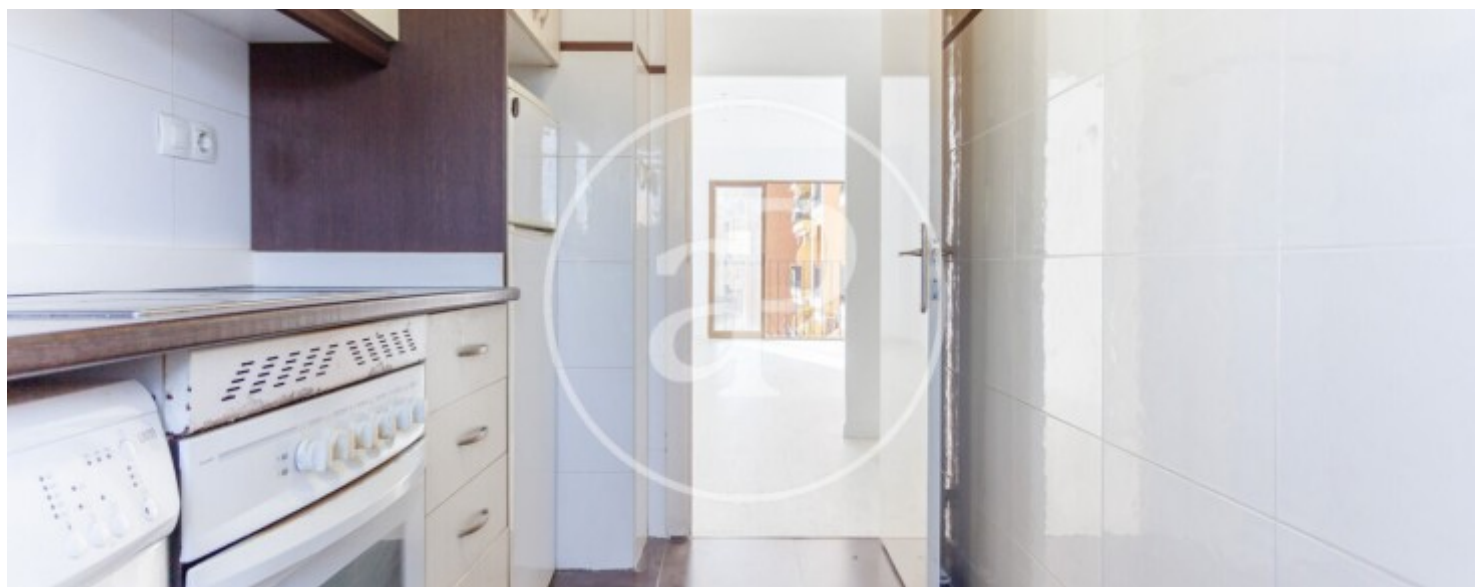
Port Saplaya, Alboraya

REF. VV2511043



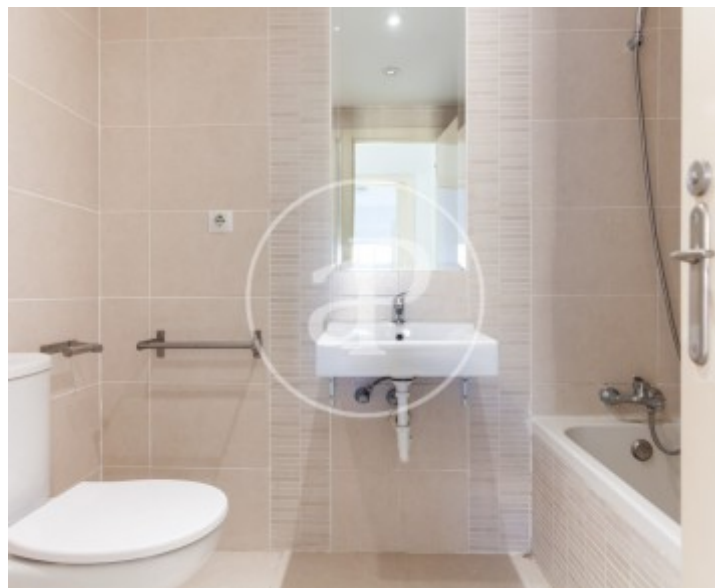
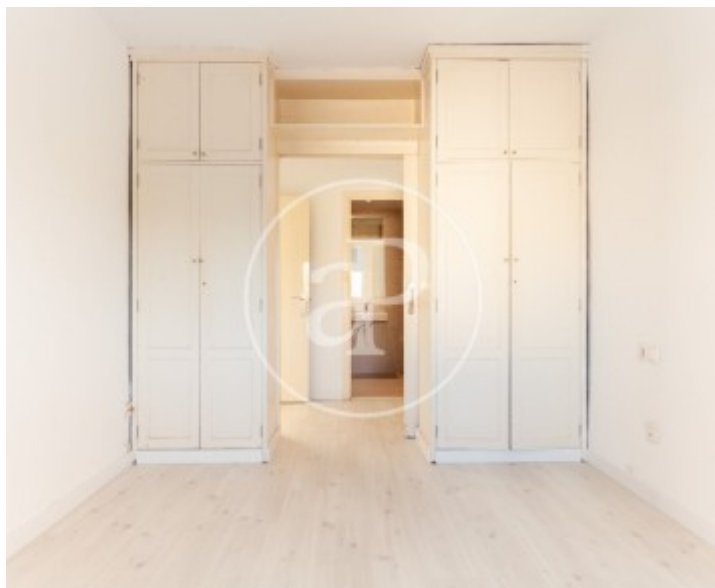
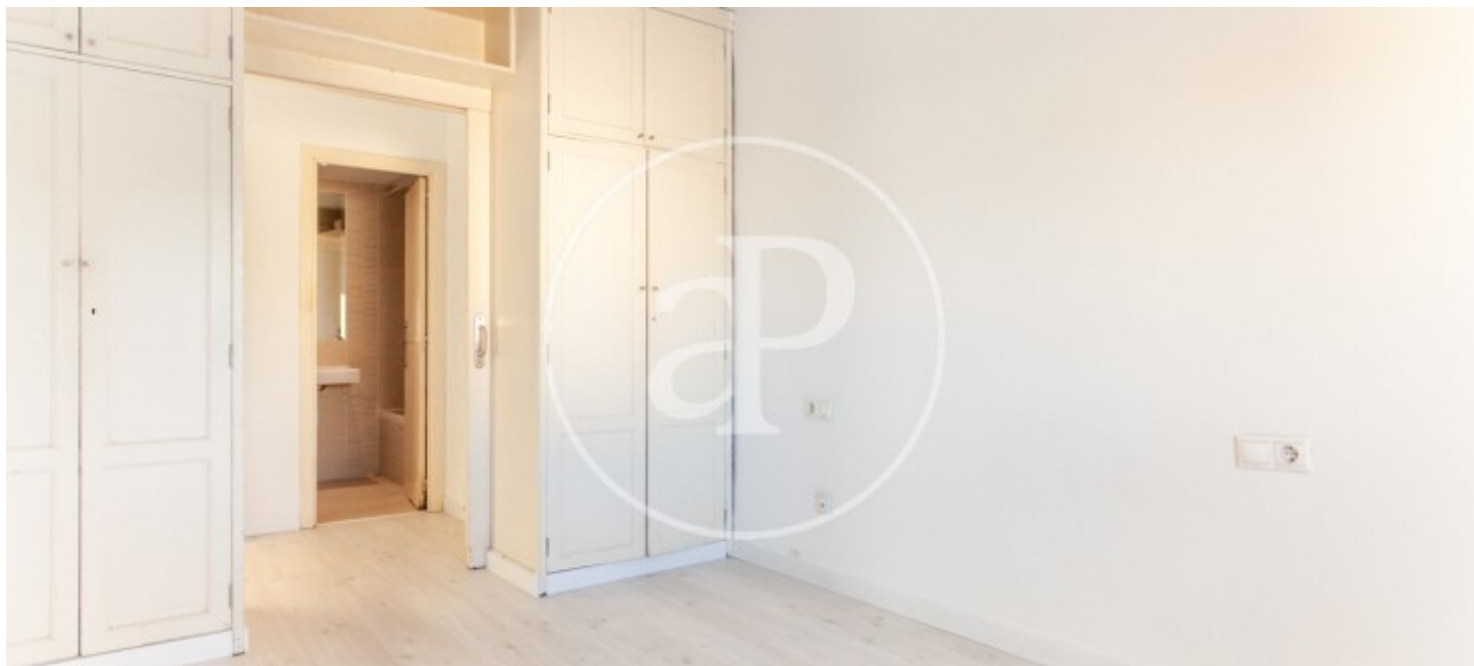
Port Saplaya, Alboraya

REF. VV2511043



Port Saplaya, Alboraya

REF. VV2511043



The information about any property is not binding to any offer or contract. Any verbal or written declaration made by aProperties with regards to the value or condition of the property should not be considered accurate or factual. The pictures make reference to some parts of the property at the times that they were taken. The areas, dimensions and distances that are given are approximate and should be checked by the client. The images are computer generated and are just an approximate indication of the real appearance of the property; these may change at any time. The information with regards to the property may also change at any time.

For **more information** or
to make an appointment

apropertiesvalencia@aproperties.es
Tel: 96 128 59 65
www.aproperties.es