

Port Saplaya, Alboraya

REF. VV2606036

Flat for sale with Terrace in Port Saplaya (Alboraya)

Features

- ✓ Views
- ✓ Terrace
- ✓ Lift

Surface
100 m²

Bedrooms
3

Bathrooms
2

Price
390,000 €



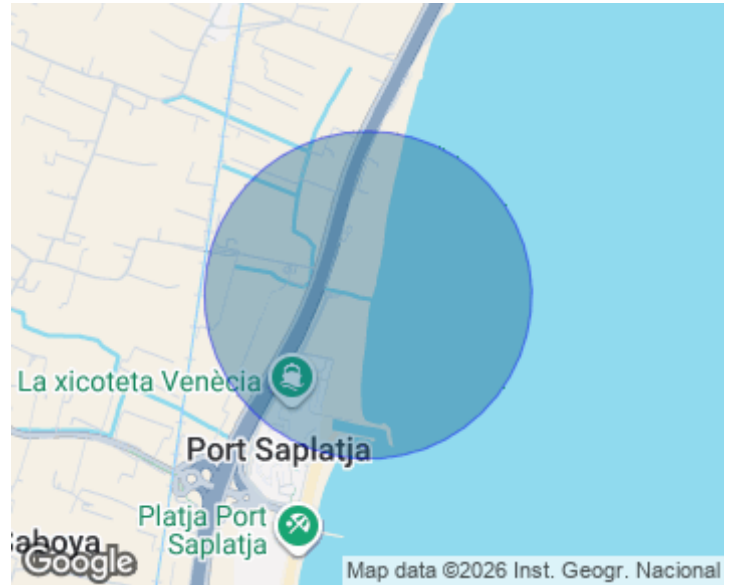
aProperties presents this exclusive partially renovated apartment on the seafront in Port Saplaya, known as the little Venetian-style area of Valencia due to the unique charm of its canals and moorings integrated between the residential buildings. This bright property stands out for its excellent layout and its privileged location next to the Mediterranean Sea. It features three spacious bedrooms and two full bathrooms, one of them en suite, providing extra comfort and independence to the main sleeping area. However, the true highlight of the property is its magnificent sea-facing terrace, an exceptional space from which to enjoy open views, unforgettable sunrises, and the pleasant sea breeze throughout the year. In addition, the property also includes a generous balcony on the opposite side of the

building, a feature that enhances cross ventilation and ensures a pleasant feeling of freshness and well-being. Among its features, the reinforced security door and alarm system are worth noting, providing a high level of safety and peace of mind. Furthermore, the east-west orientation allows for exceptional natural light throughout the entire day. The property is located on a charming street in Port Saplaya, where Venetian-inspired architecture, navigable canals, and private moorings create a unique and exclusive environment. It also benefits from direct access to the beach, just a...

Contact us,
we will be happy to assist you,
to offer you more details and information.

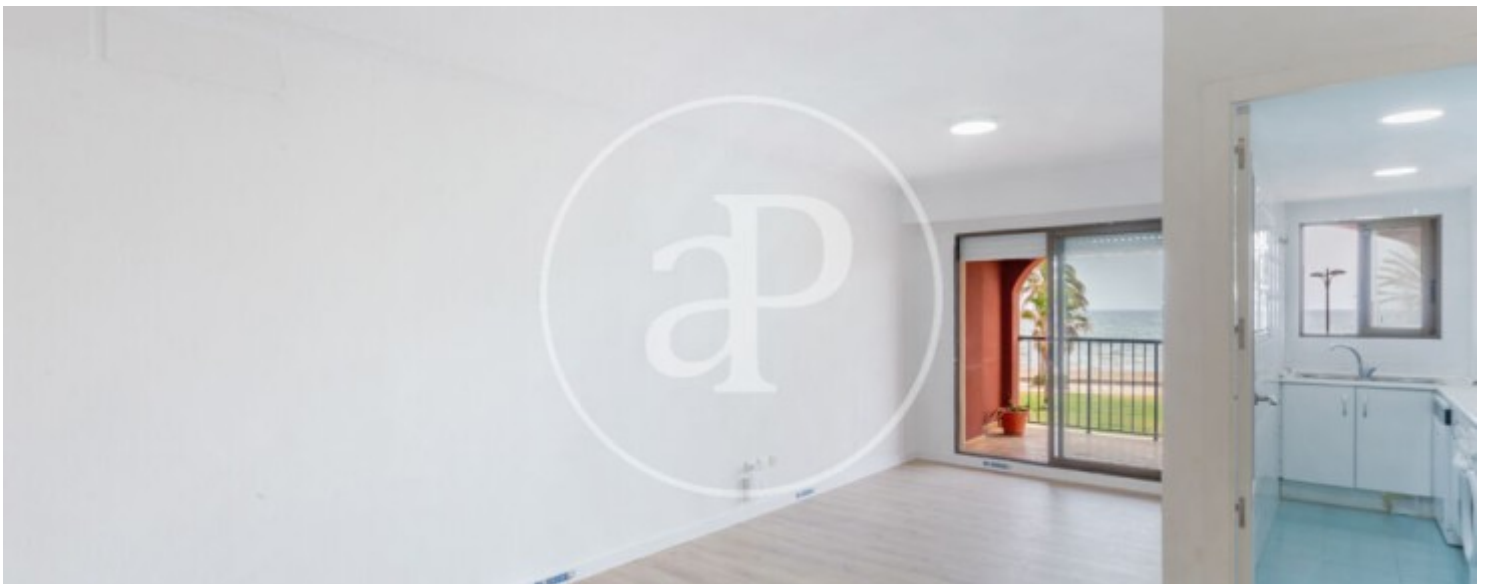
Port Saplaja, Alboraya

REF. VV2606036



Port Saplaya, Alboraya

REF. VV2606036



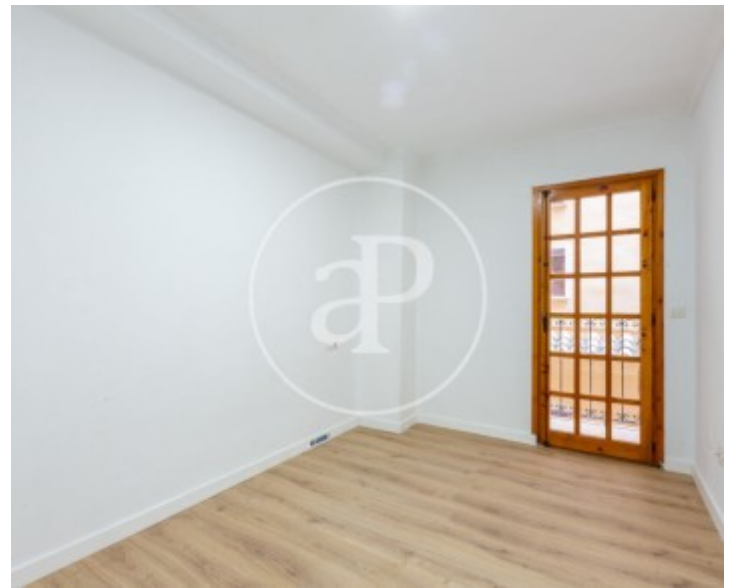
Port Saplaya, Alboraya

REF. VV2606036



Port Saplaya, Alboraya

REF. VV2606036



The information about any property is not binding to any offer or contract. Any verbal or written declaration made by aProperties with regards to the value or condition of the property should not be considered accurate or factual. The pictures make reference to some parts of the property at the times that they were taken. The areas, dimensions and distances that are given are approximate and should be checked by the client. The images are computer generated and are just an approximate indication of the real appearance of the property; these may change at any time. The information with regards to the property may also change at any time.

For **more information** or
to make an appointment

apropertiesvalencia@aproperties.es
Tel: 96 128 59 65
www.aproperties.es