

Patacona, Alboraya

REF. VV2505003

Flat for Sale in Patacona

Features

- ✓ Views
- ✓ Furnished
- ✓ Terrace
- ✓ Lift
- ✓ Concierge
- ✓ Heating
- ✓ AACC
- ✓ Pool
- ✓ Security

Surface

88 m²

Bedrooms

2

Bathroom

1



Price

425,000 €

aProperties presents you with a unique opportunity in one of the most sought-after and up-and-coming areas of the Valencian coast.

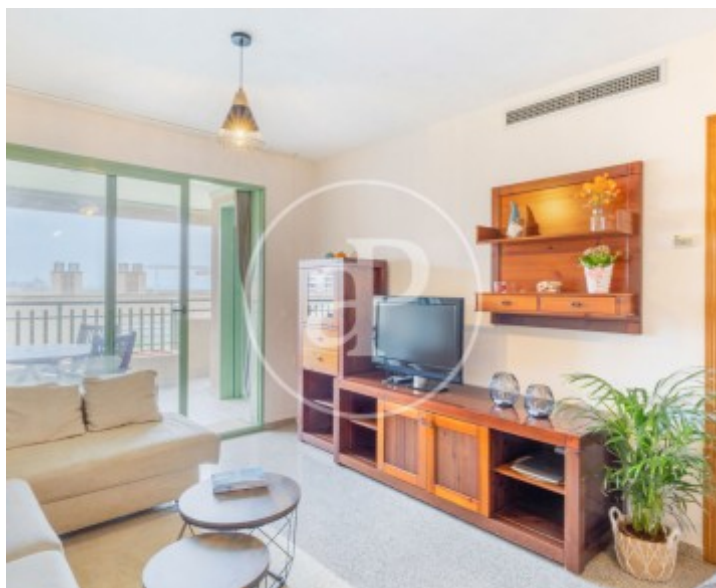
This cosy 2-bedroom, 1-bathroom flat, located frontline beach in La Patacona, offers the perfect balance between comfort, location and profitability potential. It is ideal both for investors looking for a profitable property and for those who wish to enjoy the tranquillity and Mediterranean lifestyle, without renouncing the proximity of Valencia city. The property is located in a building with 24-hour concierge service and is accessed via a spacious entrance hall. Panoramic lifts lead to the swimming pool area located at ground level,

with sea views. The flat is bright and spacious. From the living-dining room there is direct access to a terrace with pleasant sea views. It has a ducted air conditioning system (air conditioning and heat pump). The kitchen is fully equipped with ceramic hob, oven, dishwasher and has a separate laundry room. The distribution is completed with a complete and functional bathroom. The two bedrooms, both exterior and with built-in wardrobes, offer comfort and one of them has direct access to the terrace. The property is ready to move into. One of the great attractions of this property is its...

Contact us,
we will be happy to assist you,
to offer you more details and information.

Patacona, Alboraya

REF. VV2505003



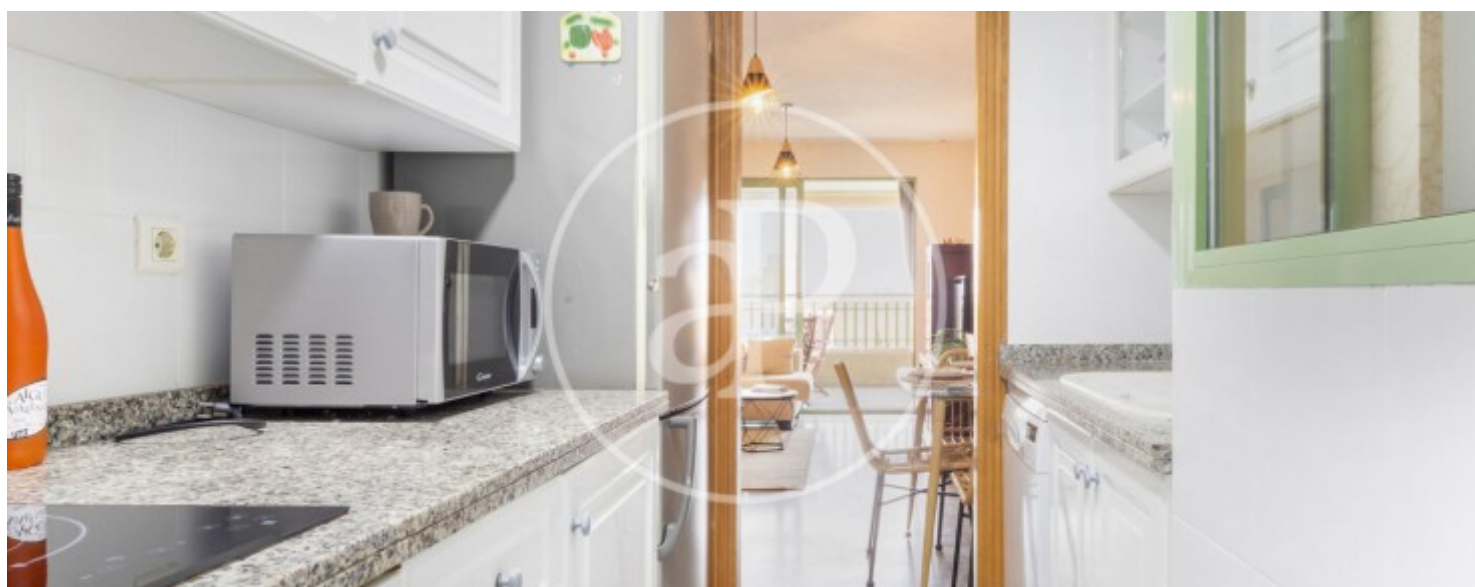
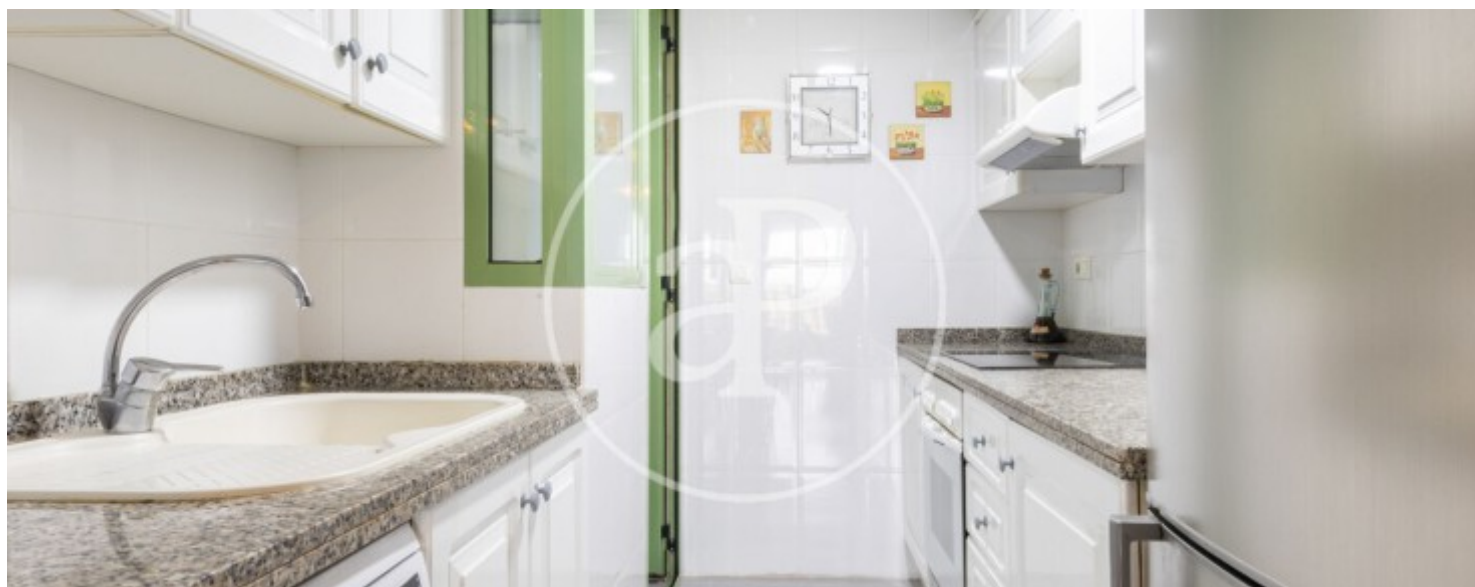
Patacona, Alboraya

REF. VV2505003



Patacona, Alboraya

REF. VV2505003



Patacona, Alboraya

REF. VV2505003



The information about any property is not binding to any offer or contract. Any verbal or written declaration made by aProperties with regards to the value or condition of the property should not be considered accurate or factual. The pictures make reference to some parts of the property at the times that they were taken. The areas, dimensions and distances that are given are approximate and should be checked by the client. The images are computer generated and are just an approximate indication of the real appearance of the property; these may change at any time. The information with regards to the property may also change at any time.

For **more information** or
to make an appointment

apropertiesvalencia@aproperties.es
Tel: 96 128 59 65
www.aproperties.es