



Patacona, Alboraya

REF. VV2409022

Flat for sale with Terrace in Patacona (Alboraya)

Features

- ✓ Views
- ✓ Heating
- ✓ Furnished
- ✓ Boxroom
- ✓ AACC
- ✓ Terrace
- ✓ Backyard
- ✓ Lift
- ✓ Concierge
- ✓ Has parking

Surface

65 m²

Bedroom

1

Bathroom

1



Price

674,000 €

Modern and well-kept apartment on the beachfront.

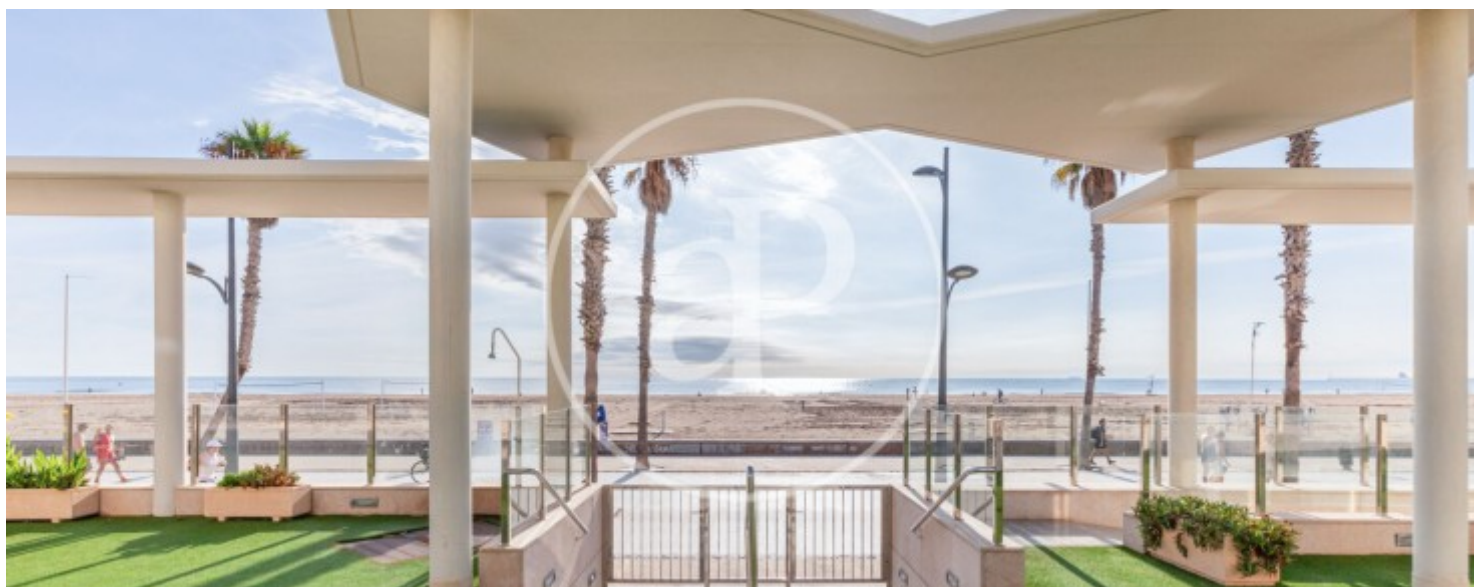
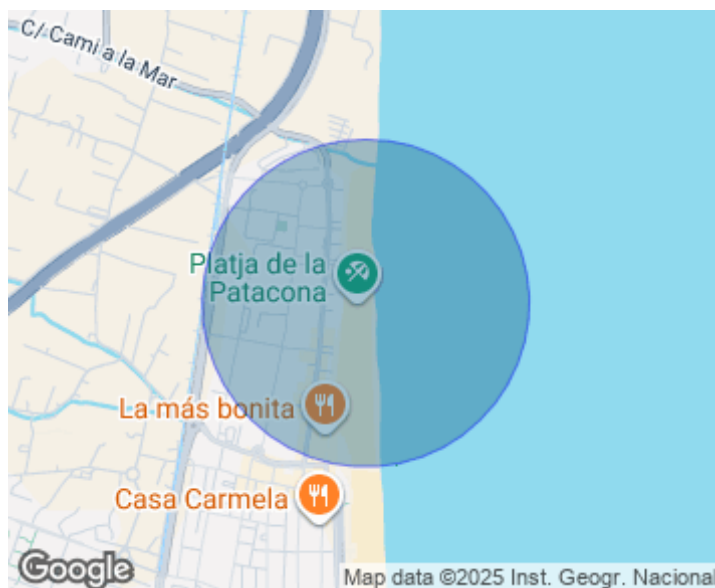
First qualities. It includes a very spacious garage and storage room with easy access. Furniture and appliances included. It is ready to move into. Located in one of the two-story buildings on the seafront, on the front line, in a luxury building, with direct access to the beach from the common garden terrace. The house has an area of 65 m2 distributed in 1 large double bedroom with built-in wardrobes, 1 complete bathroom with bathtub, fully equipped American kitchen and a spacious dining room from where you can access a terrace with spectacular views of the sea. The complex has a concierge, security cameras and

common areas: large community terrace facing the sea with shower, community room and bathrooms. The house has the best qualities and finishes: armored door, hot and cold air conditioning through ducts, tilt-and-turn windows with double glazed glazing, motorized blinds, video intercom, oak interior carpentry, smooth paint and large built-in wardrobes. Very well connected area with all services. EMT bus number 31 stops a few meters from the door, which reaches the city center, as well as other lines just a 5-minute walk away. Only 15 minutes by car to the historic center of Valencia. Area with...

Contact us,
we will be happy to assist you,
to offer you more details and information.

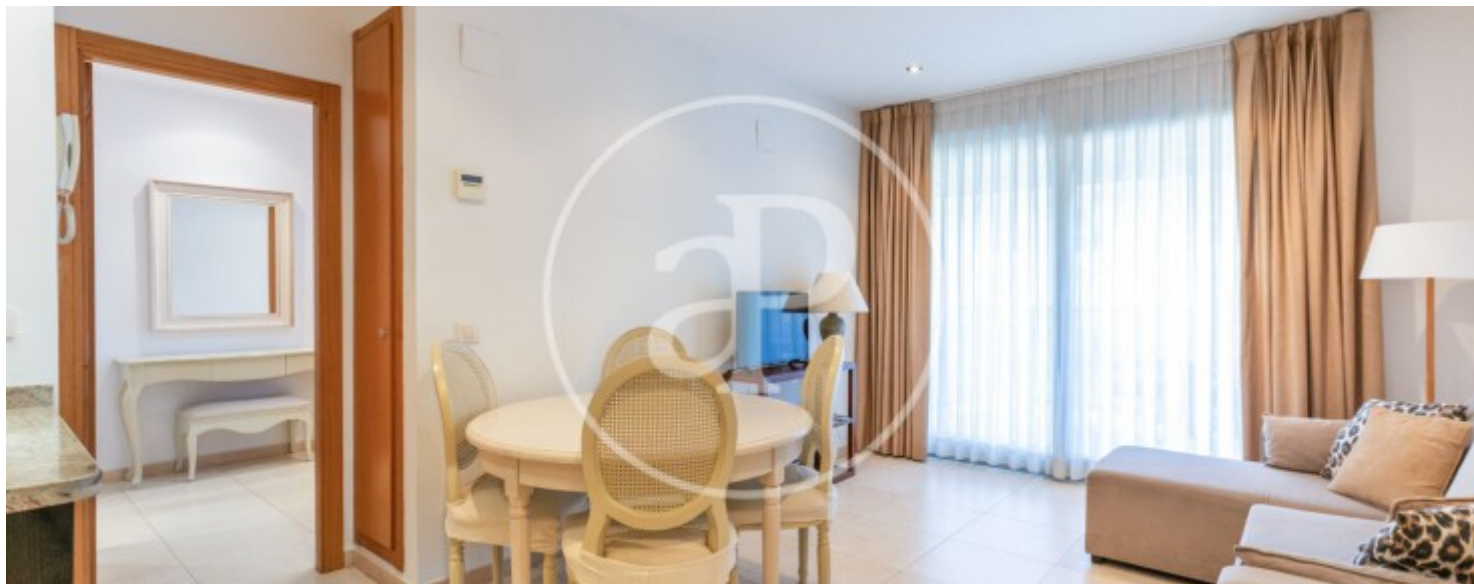
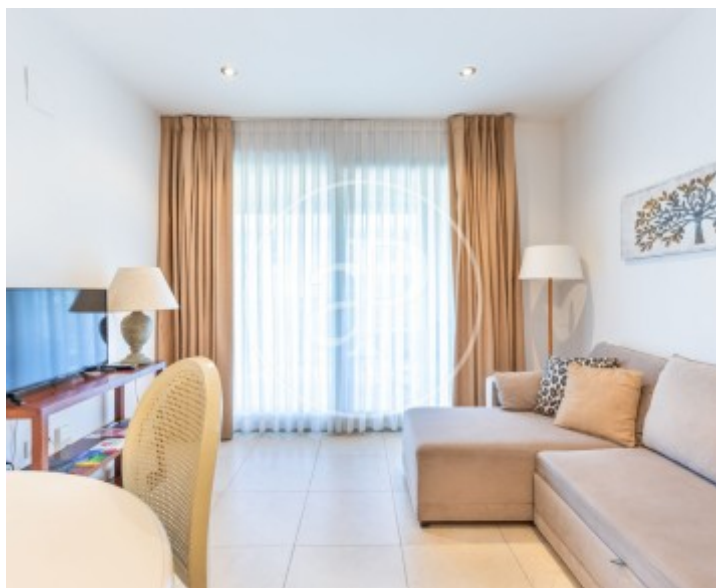
Patacona, Alboraya

REF. VV2409022



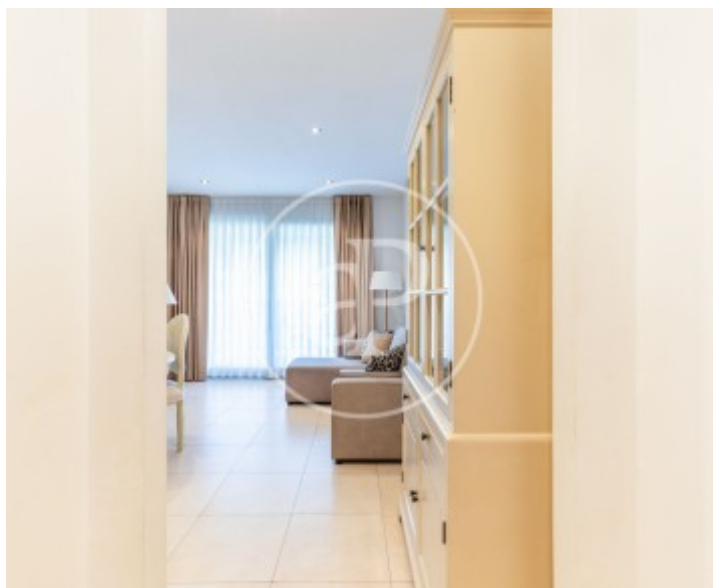
Patacona, Alboraya

REF. VV2409022



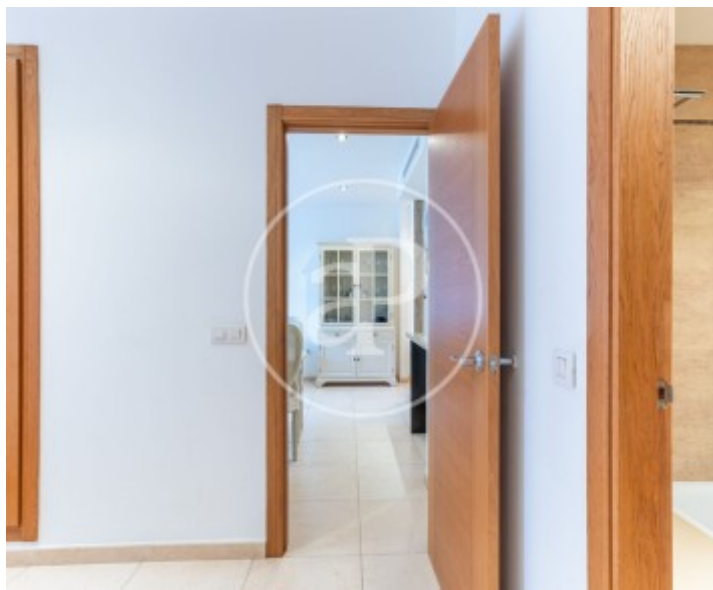
Patacona, Alboraya

REF. VV2409022



Patacona, Alboraya

REF. VV2409022



The information about any property is not binding to any offer or contract. Any verbal or written declaration made by aProperties with regards to the value or condition of the property should not be considered accurate or factual. The pictures make reference to some parts of the property at the times that they were taken. The areas, dimensions and distances that are given are approximate and should be checked by the client. The images are computer generated and are just an approximate indication of the real appearance of the property; these may change at any time. The information with regards to the property may also change at any time.

For **more information** or
to make an appointment

apropertiesvalencia@aproperties.es
Tel: 96 128 59 65
www.aproperties.es