



Patacona, Alboraya

REF. VV2507018

# House for sale with Terrace in Patacona (Alboraya)

## Features

- ✓ Heating
- ✓ Boxroom
- ✓ Terrace
- ✓ Has parking
- ✓ Furnished
- ✓ AACC
- ✓ Backyard

Price

**1,050,000 €**

Surface

**263 m<sup>2</sup>**

Bedrooms

**4**

Bathrooms

**4**



**aProperties is pleased to present an architectural gem, one of the few townhouse properties located on the coveted and exclusive La Patacona beach, the most desired destination in Valencia.**

This splendid property, situated in one of the most spectacular areas of the Valencian coast, is the perfect retreat for those seeking a distinctive lifestyle surrounded by nature. The house reveals its charm through three floors, as well as an ingeniously designed basement, where a spacious garage with capacity for two large vehicles, even a couple of motorcycles, is located, along with two generous storage rooms that offer the possibility to create a very spacious laundry area.

Upon entering the residence, we are greeted by a bright living-dining room, adorned with a cozy fireplace. From here, we access a wonderful terrace, equipped with sofas and a glass table, which becomes a sanctuary of tranquility surrounded by lush vegetation, perfect for relaxing and enjoying an unparalleled atmosphere. On the same floor, we find a fully equipped kitchen with white lacquered furniture that brings an air of modernity and sophistication, complemented by a practical office area with access to a second, more intimate terrace, perfect for peaceful moments. It also features an...

**Contact us,**

we will be happy to assist you,  
to offer you more details and information.

Patacona, Alboraya

REF. VV2507018





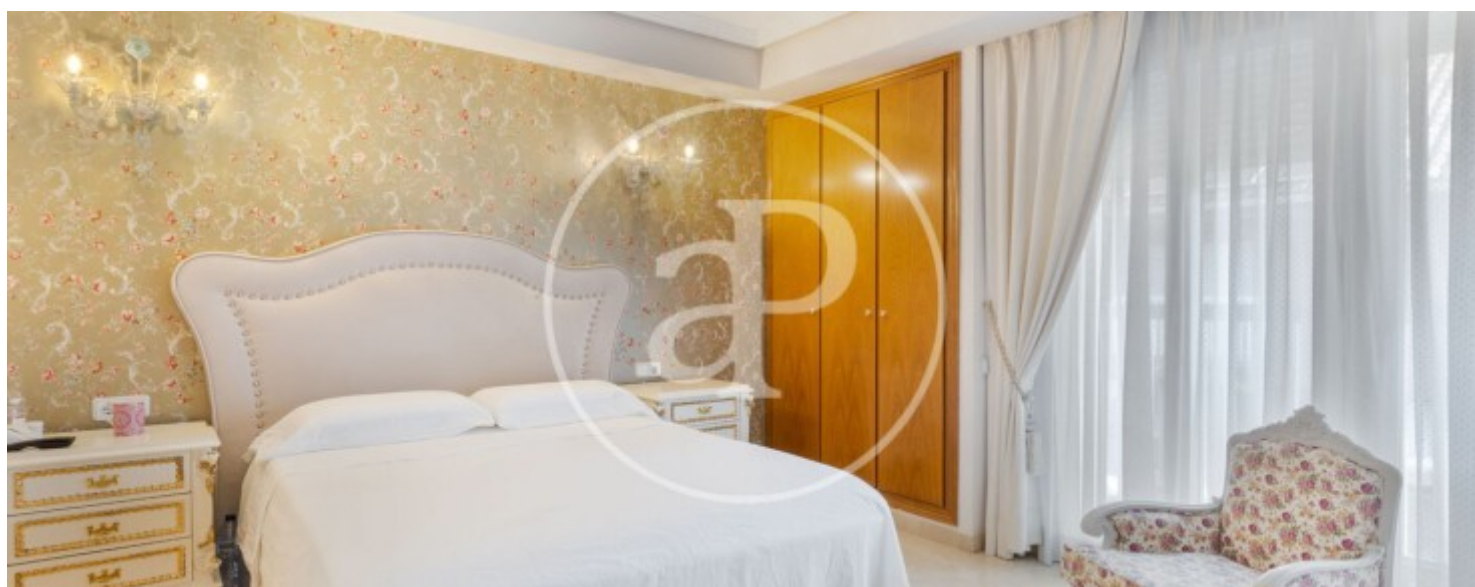
Patacona, Alboraya

REF. VV2507018



Patacona, Alboraya

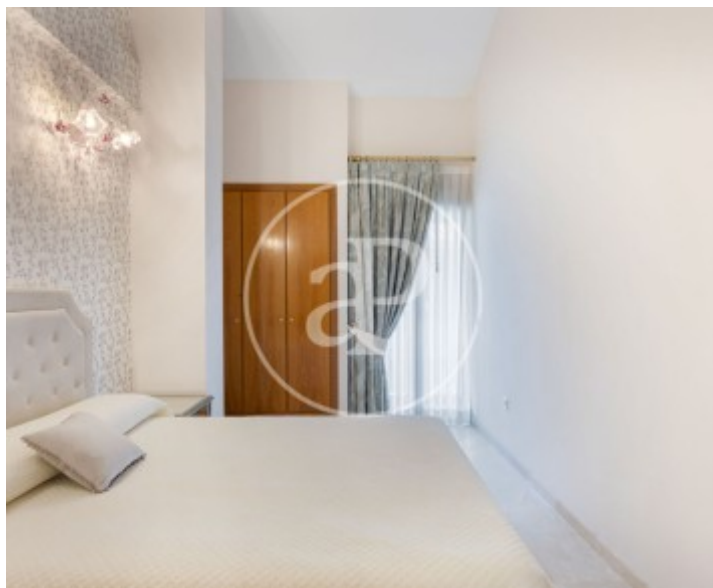
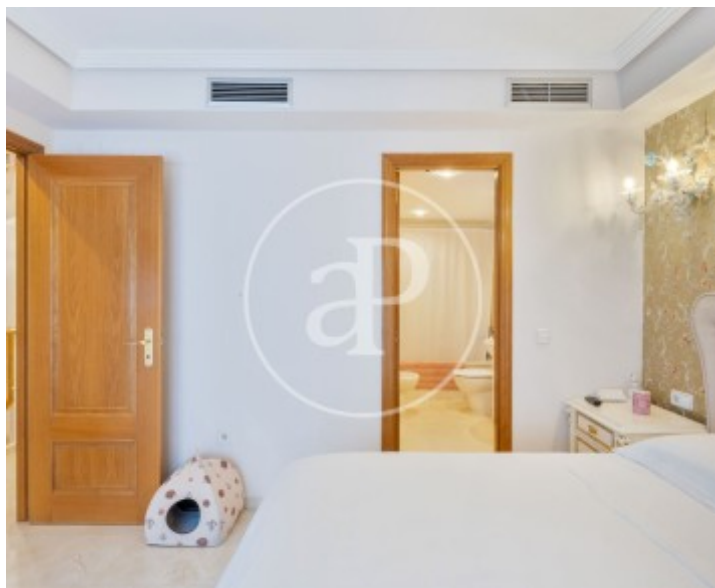
REF. VV2507018





Patacona, Alboraya

REF. VV2507018



The information about any property is not binding to any offer or contract. Any verbal or written declaration made by aProperties with regards to the value or condition of the property should not be considered accurate or factual. The pictures make reference to some parts of the property at the times that they were taken. The areas, dimensions and distances that are given are approximate and should be checked by the client. The images are computer generated and are just an approximate indication of the real appearance of the property; these may change at any time. The information with regards to the property may also change at any time.

For **more information** or  
to make an appointment

[apropertiesvalencia@aproperties.es](mailto:apropertiesvalencia@aproperties.es)  
Tel: 96 128 59 65  
[www.aproperties.es](http://www.aproperties.es)