

Patacona, Alboraya

REF. VV2409038

Penthouse for sale with Terrace in Patacona (Alboraya)

Features

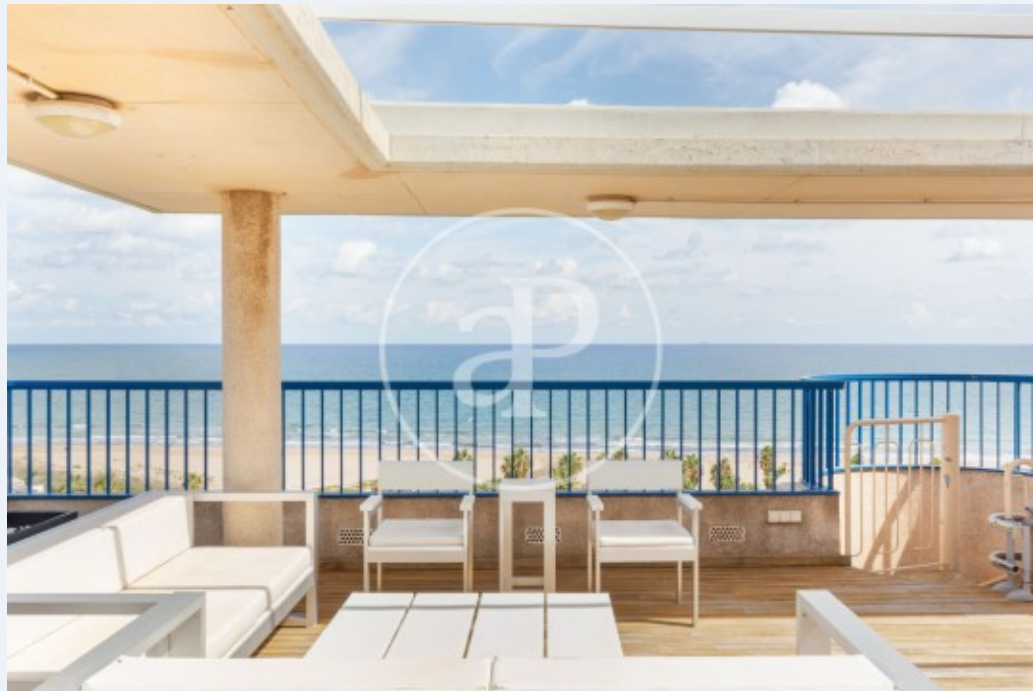
- ✓ Views
- ✓ Boxroom
- ✓ Terrace
- ✓ Lift
- ✓ Concierge
- ✓ Heating
- ✓ AACC
- ✓ Pool
- ✓ Security
- ✓ Has parking

Price
950,000 €

Surface
105 m²

Bedroom
1

Bathrooms
3



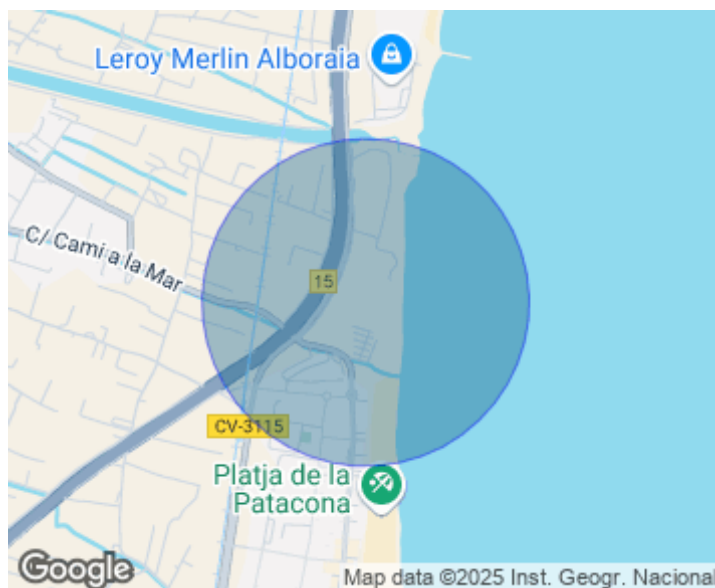
105 sqm penthouse with a 91sqm Terrace and views in Patacona, Alboraya.

The property has bedroom, 3 bathrooms, swimming pool, 1 parking space, air conditioning, fitted wardrobes, laundry room, balcony, heating, concierge and storage room.

Contact us,
we will be happy to assist you,
to offer you more details and information.

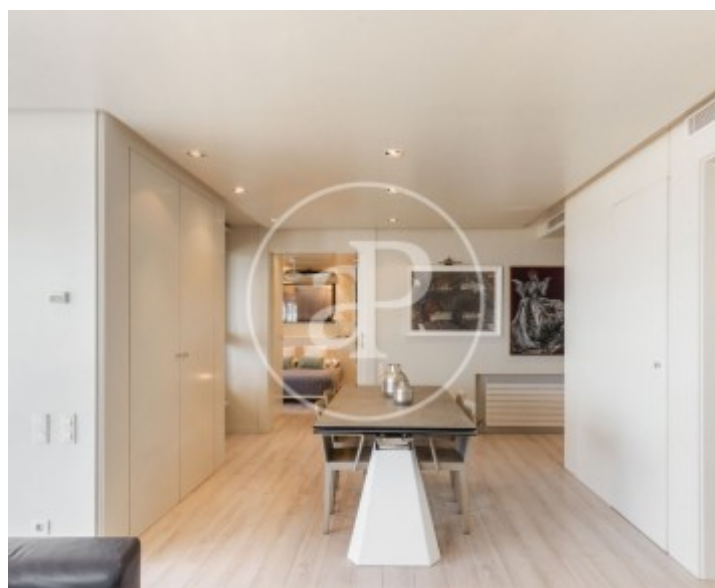
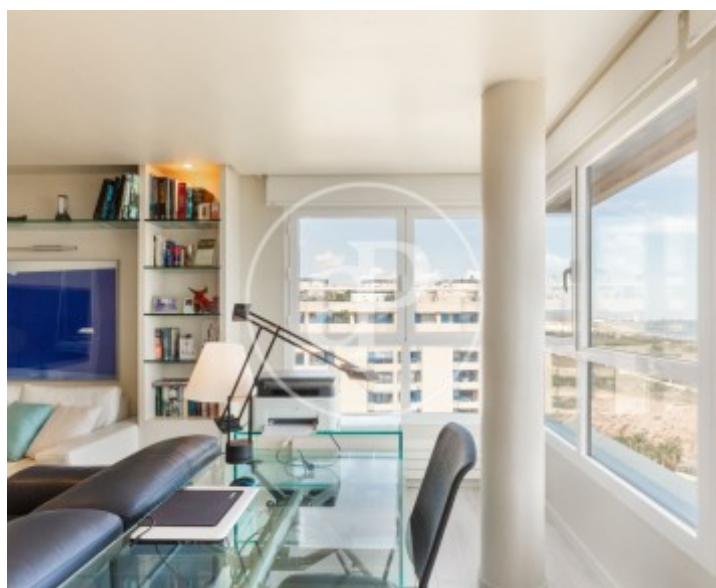
Patacona, Alboraya

REF. VV2409038



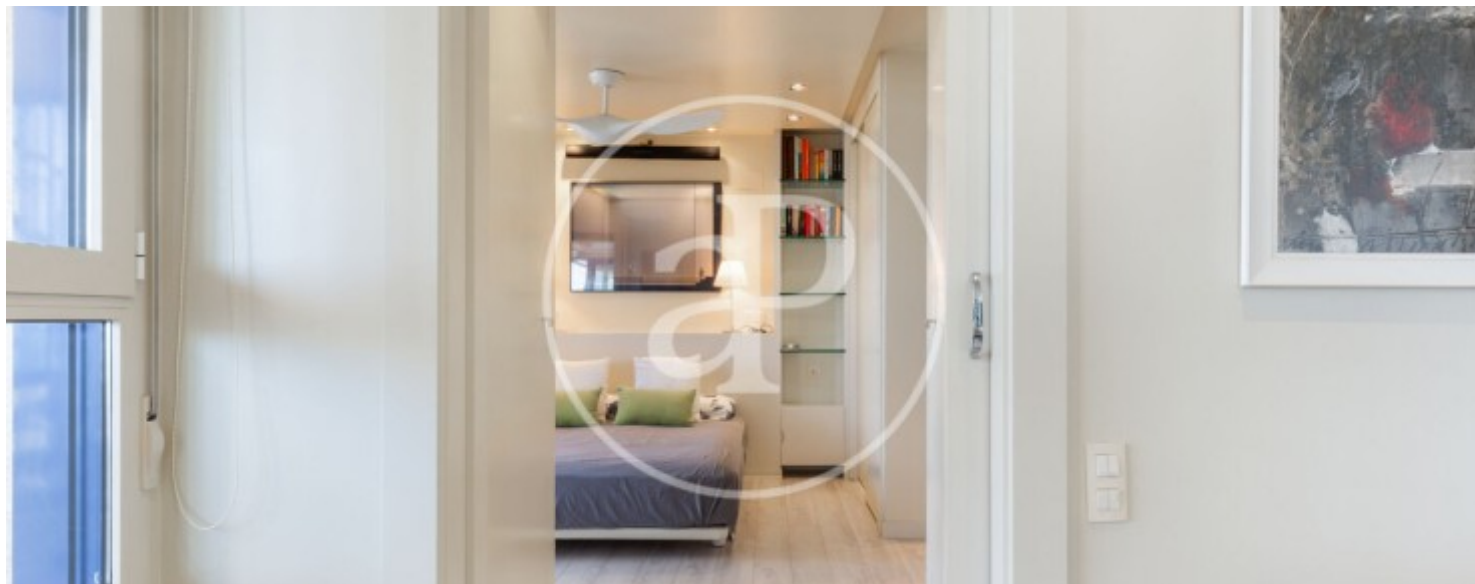
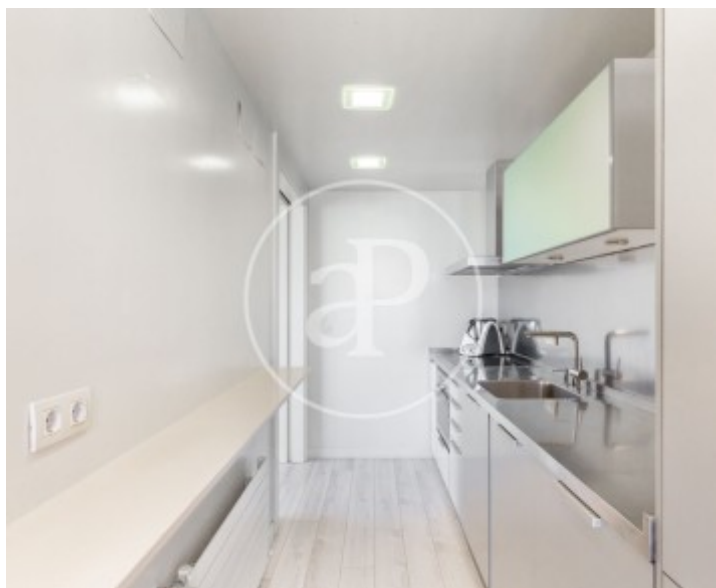
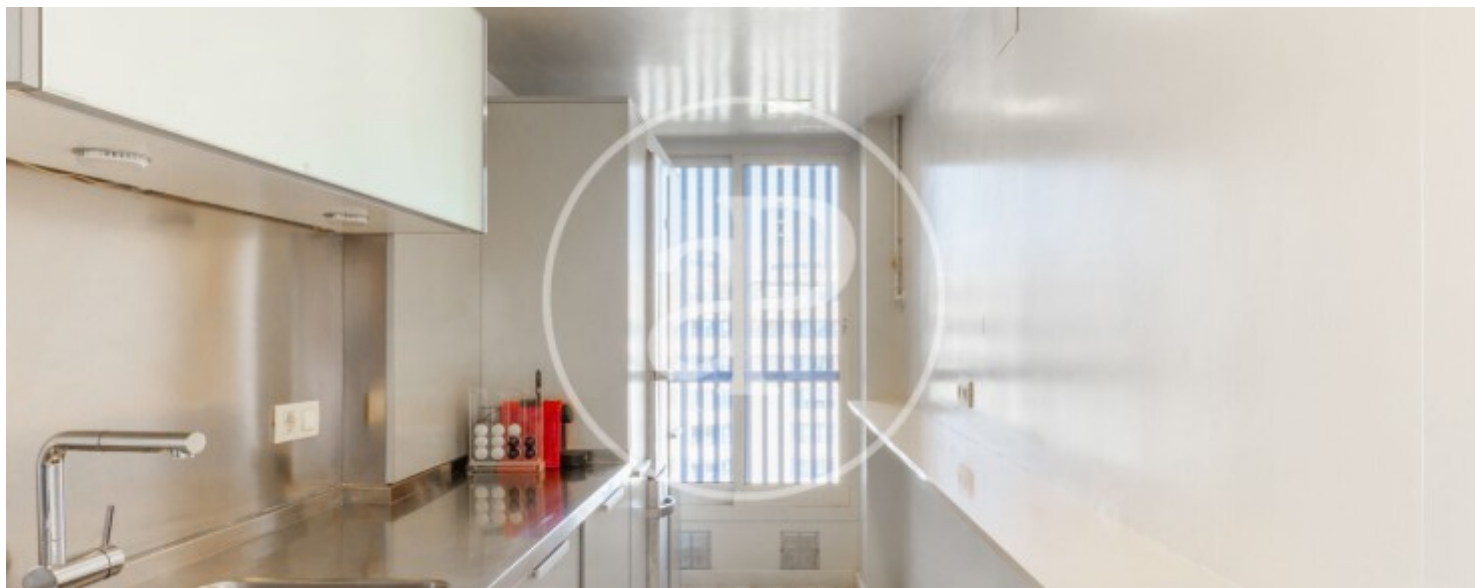
Patacona, Alboraya

REF. VV2409038



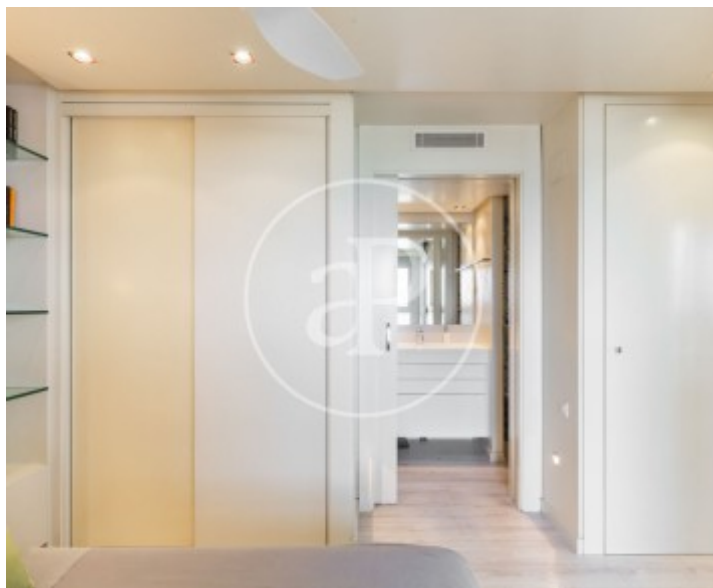
Patacona, Alboraya

REF. VV2409038



Patacona, Alboraya

REF. VV2409038



The information about any property is not binding to any offer or contract. Any verbal or written declaration made by aProperties with regards to the value or condition of the property should not be considered accurate or factual. The pictures make reference to some parts of the property at the times that they were taken. The areas, dimensions and distances that are given are approximate and should be checked by the client. The images are computer generated and are just an approximate indication of the real appearance of the property; these may change at any time. The information with regards to the property may also change at any time.

For **more information** or
to make an appointment

apropertiesvalencia@aproperties.es
Tel: 96 128 59 65
www.aproperties.es